

Milton Damerel Newsletter

SEPTEMBER 2005 (17TH EDITION)

What's On



FOR AUTUMN



Family Services.....4th Sunday.....P6
Friendship Club.....Last Monday....P6
Gospel Special.....4th December.....P6
Harvest – Parish Church...25th September.....P7
Harvest – Methodist.....9th & 10th October...P6
The Newton Boys Male Voice Choir.....P13
Over 60 Club.....First Tuesday....P15
Youth ClubAlternate FridaysP4



NEWSLETTER FUND RAISING EVENT

Trudi & Dean from 2 Heddon Moor Cottages have kindly offered to host our next fund raising event

on Friday 9th September 10.30am to 12 noon

Coffee, Bring & Buy, Raffle etc

We would really like to see more people supporting our fundraising events so why not come along and bring some new ideas for the next event. They are for everyone and we want you to enjoy them.

THE NEWSLETTER GROUP MEMBERS ARE:

Member:	Tel: no:/ E-mail:	Key area:
Sheila Daniel	261466 sheilamdaniel@hotmail.com	Children & Youth News
Tracey Dunmore	261501 Dunmorehom@aol.com	Regular contributors and features
Rose Haynes	261577 rosehaynes@ntlworld.com	Regular contributors and features
Liz Kirby	261440 lizzyslarder@freeuk.com	Editorials, layout & printing
Grace Millman	261251 grace.millman@btinternet.com	Treasurer & Fund-raising
Margaret Stannard	261486	Advertising

Letters, comments, news and articles, etc., can be e-mailed to mdnews@freeuk.com or to any of us individually. Our correspondence address is Chapel View, Milton Damerel, EX22 7PB.

We want to hear from you with letters for inclusion - topical issues, features you like and also changes to improve the content and style for future editions. We also need every-one to let us know special birthdays, births, anniversaries, and other congratulations. Also tributes on parish residents.

Milton Damerel Parish Council

Clerk-	Anne Binns	Tel 01409 261381	E-mail Anne-John@22hundred.freemove.co.uk
	Little Derworthy, Milton Damerel. EX22 7LH		
Councillors	David Dyer (chair)	01409261412	
	Charles Bellew	01409 261214	Janet Elliott 01409 281744
	Sarah Harper	01409 261473	Michael Kirby 01409 261440
	Grace Millman	01409 261251	Gareth Piper 01409 261616

The parish council have met each month since the publication of the last newsletter. An extra meeting was also held in July in order for a couple of planning applications to be discussed that arrived the day after the usual meeting.

Our Annual General meeting was held in May. David Dyer was elected to continue as chairman and Sarah Harper as Vice chairman. This meeting was an opportunity to welcome representatives from the organisations that receive parish grants. We were brought up to date with news and issues relating to the Sunday Club, Youth Club, Newsletter and Parish Hall. It was very interesting and we were very grateful to the people who represented these organisations.

At the meeting following on from the AGM a letter was read out that had been written by twelve children in the parish and had been received by the clerk. The children were requesting a play area. In view of the possible increase in numbers of children due to the developments it was agreed that this required further thought and enquiries needed to be made. (See separate article).

The parish council have been informed that British Telecom proposes to remove the public telephone at Venn Green. This is not used and its continued maintenance cannot be justified. It is proposed that the telephone at Whitebear will be retained but will become a cashless phone presumably one that takes debit/credit and phone cards. It was agreed that this phone is more likely to be used by passing motorists as it is more visible from the road and Whitebear has the room for vehicles to pull in.

The clerk received information about the celebration of the Trafalgar weekend. Celebration of this event was discussed and it was felt that as Milton Damerel is not a coastal village it was perhaps not likely to attract much interest. If you do not agree and would like an event organised and you are willing to support this with your attendance please can you inform the clerk or any of the parish councillors.

In July the clerk was visited by the parish council internal auditor. The accounts were deemed to be accurate and there were no issues to be reported to the council. The annual return has now been sent to the external auditors and when they are returned I will be putting up the notice informing everyone of their right to inspect the accounts if they so wish.

Since the last newsletter planning applications have been received for

3 Fore Street	Cross Cottage	Coppers	Town Farm
Milton Mill	West Bridge	Woodland View	Chapel view

The Holsworthy Motor Club will be holding their classic car rally on Sunday 11th September. They plan to come up the A388 from Holsworthy at around 10.30AM on their way to Stibb Cross. They then come back and turn Right at Shop Cross and aim to pass Court Barton at 1.30PM.

Clerk

Anne Binns



CONGRATULATIONS!



To Doreen Ward of Woodland Villa who celebrated her 80th birthday on 12th May

To Matthew Carter of Derworthy who was awarded player of the tournament in Group A at the Football Festival for Primary Schools in Holsworthy area

To Rose Haynes of Grawley on winning Inter Breed Champion at Holsworthy and for her success at North Devon Show with her "best" ewe.

To Michael Kirby of Milton Mill on winning a Commercial Beef Hat trick by taking the Championship at Liskeard, North Devon & Holsworthy Shows with his steer "On the Hook" and for winning Reserve Champion at Okehampton with his home bred Limousin "Koojan Viper".

To Jemma Dunmore of Fore Street on passing her driving test

To Desmond & Marjorie Colwill of Oxenpark, Gidcott Cross on celebrating their Golden Wedding Anniversary on 2nd August

To Putford WI on their successes at the Holsworthy Show on winning all three cups in the WI competition.

To Newton St Petrock WI on their success at the North Devon Show on winning first prize in the WI competition

To Lisa Sanders & Simon Braunton on the birth of their second son on 6th August 2005. Congratulations to the grand-parents and great-grandparents!



GOOD-BYE & WELCOME



A warm welcome to:

....**Dennis & Sue Buswell** who have moved into The Old Stables at Milton Town

....**Trudi & Dean** who have moved into 2 Heddon Moor Cottages

....**Mike & Roberta Jackson** who have moved into Westfields at Venn Green

And farewell to:

.....**The Sixsmiths** who have moved from Westfields, Venn Green

Letters to the Newsletter

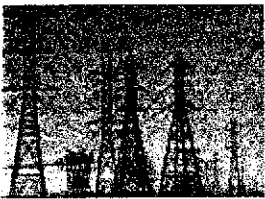
The letters published in this newsletter are the opinions of the writers and not necessarily those of the newsletter members. All letters must be signed by the writer and the full name and postal address (even with e-mailed correspondence) must be given which will be printed unless the writers request otherwise. The members reserve the right to edit or withhold any letters for publication at their discretion but without the full name, address and signature they will not be considered. We welcome letters on all subjects provided the content is legal and decent. Send your letters by post or e-mail to the address on the front of the newsletter.

Please write and tell us your views about any topic from Village life to World affairs. Send your letters by e-mail or post to "Letters" at the address on the front of the newsletter.

Pylons V Wind Turbines as a "blot on the landscape"!

From : Sarah Harper, Crossways

In response to the wind turbine letter (MD news 15th Edition), the author's property must have, from its beautiful high vantage point, a magnificent view of the parallel lines of electricity pylons which encompass Milton Damerel. I wonder if when these great monsters were erected was there such an outcry? I suspect not, as people were grateful not to have to go outside come rain or shine, to crank up or shut down their generators. Is this the generation who is now so against the turbines, I wonder? I have found, from experience, that the younger generation are extremely positive about renewable energy (wind turbines included) after all it is their future we should consider. At what cost do we keep mining fossil fuels? Some people say that you can find beauty in everything, pylons included, but there are other issues to consider such as damage to health and the environment.



Although I have read much technical data I am going to write from personal experience. I regularly marshal at sporting events and often stand near or under a pylon for up to 4 hours at a time, ending up with a blinding headache and feeling very irritable. Often I marshal under the wind turbines at Newlyn Down nr Fraddon. There must be about twenty but I have never felt any adverse effects. In fact I can easily find the beauty in them and their movement. I and my family have regularly camped under them and have strained to hear any turbine noise at all. I know many of the Bradworthy community were against the turbines but I applaud them for accepting them.



If we don't go down the route of renewable energy of any sort, how long will we be able to appreciate the rolling countryside anyway? I for one would prefer the turbines to pylons and no I'm not a NIMBY, I would have one in my backyard if I could afford it.

Squirrels

From: Lesley Self, Venn Green

About six weeks ago Peter and I were quite pleased to see a pair of squirrels back in our garden. We had not seen any for around 3 years. They were soon on the bird table so we made a feeder with a cage so only the small birds could get in. Although the crows and squirrels were around they did not seem to take much of the bird food. You can imagine our shock when today (27th July) we found the two squirrels dead on the lawn. One had obviously been there a few days as the maggots had set in. Has someone around Venn Green been putting down poison? I hope not! We do not have a cat now but a few neighbours do and I would really not like to hear that a family pet has come to the same sad and sudden end.

Dartmoor Country Furniture

Made to measure

Doors & Windows.

Wardrobes, Beds, Bedroom Cabinets & Chests of Drawers,
Fire surrounds, TV Audio Cabinets, Tables, Bookcases & Display Cabinets,
Welsh & Irish Dressers, Complete Kitchens or Utility Room Units,
As well as Kitchen & Utility worktops made from solid Beech, Oak or Ash.
Also 2nd Fix Carpentry, Skirting Boards, Architraves, Dado Rails etc.

All pieces are made in solid wood, using either soft or hardwoods which are locally sourced
& grown wherever possible.

Advanced City and Guilds Qualified

For more information.

HeadWeir, Gratton, Milton Damerel 261238

YOUTH & FAMILY NEWS

The Youth Club

Youth Club has now stopped for the Summer Break until Friday 9th September when we meet to work out the programme and parent rota. In the meantime Safeguarding (a policy and arrangements for safety of the young people and leaders) continues to be worked on and will be in place shortly. Youth Club is open for any young people from 9 years plus and meets fortnightly, mainly in the Schoolroom.

During the last few weeks club has had a games and BBQ evening, thanks to Helen and Azan, and a treasure Hunt making use of the footpaths around the church, village hall, etc., thanks to Sarah and Azan. The final club was held on Widemouth Bay Beach and despite a dull overcast evening at home it proved to be a lovely mild evening on the beach and a great time was had by all with swimming cricket/rounders and loads of hot dogs and burgers all round. New members are always very welcome, just speak to a parent helper or give me (Sheila Daniel) a ring; we will forward details to you.

Full-time Rural Youth Worker

Support continues to pour in for this most worthwhile project with donations, grants and letters. The committee were delighted to receive a donation from Milton Parish Church. Bradford's Heritage Week-end, including guided walk at Dunslund, stalls, entertainment by local children, history talks and a Songs of Praise, amongst other events were really well supported and raised over £900. I'm sure the committee would wish me to thank all who helped and gave their support to this event. Other events are in the pipeline - I'm sure you will see notices of these.

Chaos to Creation

A free creative event for both children and adults was held in the Schoolroom at the end of May. About 14 children and a similar number of adults came. Every-one had the opportunity to take part in making cards with Joanne and John O'Connor, our special guests, making banners, drama and dance, using flags and ribbons. Rev Doreen Delacassa came along from Hatherleigh to lead the drama and story telling. During the lunch-time break, picnic lunches were shared and the video Shrek 2 kept every-one amused. The event was concluded with a short time of lively worship in the chapel bringing all the creativity together in a great ending. The following Sunday morning a Family Service was held celebrating the Anniversary of the Sunday Club. Club members took part in the service with singing, flag dancing, reading and drama. We were pleased to welcome John and Joanne who helped and also Sarah Gilbert (from Sheepwash) who played a piano solo. Coffee etc., was served in the Schoolroom following the service. The collection amounting to £135.66 was for Sunday Club funds. We wish to thank all who came and gave their support.

Fun with Food

What do the following have in common?

1. Pitta, Nan, Rye
2. Kiwi, Ugli, Star
3. Bortsch, Mulligatawny, Cock-a-leekie
4. Paella, Risotto, Biryani
5. Gruyere Edam Brie

Answers on Page 11

Joke!

Diner: What's wrong with these eggs?
Waiter: Don't ask me, sir, I only laid the table!



Did you know

The Earl of Sandwich was so busy gambling, he couldn't stay to sit down to his dinner
- instead he asked for his roast beef to be sent between two slices of bread ..
- and so the first sandwich was invented!

Try making Sail Boat Eggs

For the boat use half a hard-boiled egg. For the sail, cut a slice of cheese into a triangle shape.
Fit into the boat using a small cocktail stick.



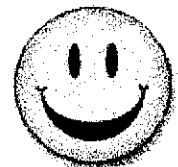
Make a Smiley Face open sandwich

You could use:

Cress for hair, A cherry tomato for the nose
Egg slices for ears Cheese eyes
and Red pepper slices for the mouth.



Sandwiches



WORD SEARCH - Hidden in the squares are the following foreign foods:

PIZZA

SPAGHETTI

CHAPATI

NOODLES

HAMBURGER

GARLIC

PAELLA

CHOW MEIN

GAZPACHO

CHILLI SPICES

GOULASH

V	E	D	C	I	L	R	A	G	M	C	A	E
O	T	N	N	I	N	D	S	K	C	T	U	H
U	B	I	N	G	W	O	E	H	H	C	S	I
G	M	R	A	I	S	S	O	B	I	P	D	S
R	T	E	H	T	Q	W	H	D	L	J	T	P
E	L	Z	C	T	M	U	G	M	L	R	A	G
G	E	A	Z	E	A	K	A	A	I	E	C	M
R	I	T	I	H	P	I	Z	N	L	O	S	F
U	D	N	T	G	C	Z	P	L	T	N	E	P
B	W	D	F	A	I	Y	A	N	G	U	C	D
M	I	T	A	P	A	H	C	R	L	D	I	O
A	D	E	P	S	S	B	H	U	I	L	P	W
H	S	A	L	U	O	G	O	K	E	N	S	J



Youth & Family Entertainment

Some family events at The Plough, Torrington

For details of these and other events contact The Plough

Box Office: 01805 624624 www.plough-arts.org

The Plough also has a Supporters Club, which you could join

Date & Time	What's On	Notes
Fri 19 th Aug at 5.30pm Sat 20 th Aug at 11am Thu 25 th Aug at 4.30pm Fri 26 th Aug at 4.30pm Sat 27 th Aug at 2pm Tue 30 th Aug at 5.30pm Wed 31 st Aug at 5.30pm Sat 3 rd Sep at 3.30pm	Film "Madagascar" (U) Animated	
Tues 12 th Oct at 9.30am & 1.30pm	Bagpuss	A wonderful nostalgic family show. Songs, Music & Fun of the BBC TV Series
Mon 24 th Oct at 2pm Tues 25 th Oct at 2pm Wed 26 th Oct at 2pm Fri 28 th Oct at 2pm Sat 29 th Oct at 11am	Puppet Craft presents Nobody Rides the Unicorn	A puppet show for every-one 4 years and upwards
Mon 24 th Oct at 2pm Tues 25 th Oct at 2pm Wed 26 th Oct at 2pm Fri 28 th Oct at 2pm Sat 29 th Oct at 11am	Film Charlie & the Chocolate Factory (PG)	A young boy's tour of a most magnificent chocolate factory.
Wed 7 th Dec at 7.30pm Thu 8 th & Fri 9 th Dec at 1pm and 7.30pm	The Lion, The Witch and the Wardrobe	North Devon College Performing Arts students present CS Lewis classic tale as their Christmas production
Sat 17 th Dec at 8pm	Independent Ballet Wales "A Midsummer Night's Dream"	Explosive dance, physical theatre, classical ballet to delight the family. Ballet workshop 5-6pm for over 9 year olds
ALSO AT THE PLOUGH:		
Sat 17 th Sep Sat 22 nd Oct Sat 12 th Nov	African & Belly Dance Workshops for ages 10 years + and adults	Info: Rebecca Jeffery (African) 01237 441385 Linda Hull (Belly dance) 01288352358
Sun 18 th Sep 10.30 am to 4.30pm	Gospel and Sacred Songs with Nick Prater. Voice workshop. Sing Gospel, Spirituals & Peace Songs	No singing experience or ability to read music necessary
Fri 2 nd Dec to Fri 30 th Dec	Original Gifts from around the world including Devon. Sneak preview on Fri 2 nd Dec at 7pm with mulled wine and music	Affordable works of art, rugs, toys, paintings, mosaics, feltwork, pottery, wood, etc. Delightful gifts for Christmas.

We extend a very warm welcome and invitation to any-one wishing to come along to our regular services/meetings/clubs. Just come along to any events/clubs you see advertised, or if you would want to know more or have an introduction, please contact any of the leaders.

OUR SUMMER GOSPEL SPECIAL on 31st July saw the return visit of the Culm Valley Crusade Choir, with members drawn from the Tiverton, Cullompton and Exeter area. The choir has members of all ages and have a tremendous variety of musical talent, all used to convey the love of Christ and to demonstrate the commitment of all the choir members to their Christian faith. The chapel was full for the evening concert and their programme of gospel songs was much appreciated by all who came. Why not come along to our next Gospel Special – it is an uplifting experience and puts a song in your heart!

THE HARVEST FESTIVAL WEEK-END will follow our normal programme, with the chapel open on Friday, 7th October for receipt of gifts of flowers and produce, and for arranging the displays. We are hoping that families and friends will take responsibility for an area or a window. Our morning service on 9th October at 11am will be a family service led by Mrs Rachel Parsons. Every-one very welcome. You are also invited to join us for the Harvest Supper on Monday evening at 6.30pm. We start with a bring and share buffet tea/supper, which is followed by a short thanksgiving service led by our minister, and then there is an auction of the flowers and produce. We would love to see you at any of the week-end's events.

FRIENDSHIP CLUB UPDATE – The Club will not be meeting during August or September.

Monday, 31st October Afternoon from 2.30pm for Children's Hospice South West, with stalls and teas, etc.

Monday, 28th November Special guests Freda and David Brawn who will talk of their "travels in the camper van" New members very welcome to any of the club meetings, which are held on the last Monday of each month from 2.30pm to 3.30pm.

PRAYER & BIBLE STUDY – Normally meets every Monday evening at 7.30pm in the Schoolroom; open to all Christians of any denomination.. We have just completed a study based on Ecclesiastes and will begin a 10 week series on "Women of the New Testament" on 8th August.. Each session concludes with a time of prayers – of thanks and of concerns in this area. If any-one wishes for us to pray for them or about local concerns, please feel able to contact one of the Stewards...or even better, come along on a Monday evening.

SUNDAY CLUB & FAMILY SERVICES

Sunday Club meets on the 1st, 2nd and 3rd Sundays of each month and Family Services are held on the 4th/last Sunday. Family services are planned for:

Sunday, 28th August	Mr Peter Parsons
Sunday, 25th September	Mrs Jan Wheeler with praise band V4J from Slough
Sunday, 30th October	Mrs Gill Daniel including "Wake Up Call" in aid of SHELTER
Sunday, 27th November	Mrs Jan Wheeler
Sunday, 18th December	Mr Courtney Drew

DATES FOR YOUR DIARY:

Sunday, 4th September Putford Chapel. Concert by the Stowford Meadow Singers, chaired by Mrs Anne Rowe for their Chapel Anniversary

Sunday 18th September Woodacott Methodist Harvest Festival services at 2.30 and 6.30pm Preachers: Rev J Henry and Mr C Drew

Sunday & Monday, 25th & 26th September Beacon Methodist Harvest Thanksgiving Services Sunday at 11am & 6.30pm. Preacher: Rev John Carne, Chairman of the Exeter and Plymouth District. Monday - Harvest Supper at 7.30pm with Rev J Henry

Saturday, 8th October Shebbear Study day – Ecumenical day at Shebbear College from 9.30am. Speaker: Rabbi Jonathan Allen. "Scrolls and Parchments – How trustworthy are the Scriptures?" Cost £10 per head to include lunch (hot or cold at the College). Further info / booking- contact Peter Ellis 01409-231309; Chris Andrew 01409-281618; David Ley 01805-601247; tel Lott 01409-281242

Sunday & Monday, 9th & 10th October Milton Damerel Harvest Thanksgiving Services at 11am & 6.30pm respectively – see above for more details.

Sunday, 4th December Milton Damerel. Gospel Special with the Stowford Meadow Singers chaired by Mr Eric Moore.

Saturday & Sunday, 10th & 11th December Milton Damerel. Christmas Tree Festival for the Shebbear Circuit

CHURCH COUNCIL

All Churches are required to have and adopt a Safeguarding Policy, which provides a framework for all activities with children and young people. We have begun work on our policy, initially with respect to the Youth Club and plan to complete the work to begin the new session of the Club in September.

COMEDIAN BOBBY BALL makes a return visit to Bude's Parkhouse Centre on **SATURDAY, 15TH OCTOBER** at 7.30pm. Tickets available from The Ark Angel Christian Bookshop, Bude, 012888-356886. And just to wet your appetite Video "An Evening with Bobby Ball" available from Shebbear Circuit Resources (Sheila Tel: 261466) in which Bobby talks about his life and faith along with very funny humour. Running time: 57 mins. Also Bobby and other comedians (Jimmy Cricket, Sid Little, Don Maclean, etc) appear in the Laughter Makers, talking of their faith plus live entertainment included. Running time: 67 mins.

CIRCUIT NEWS - Did you know the Shebbear Methodist Circuit publishes a quarterly Magazine and Plan (MAP)? Included are many articles about what is happening around the Circuit, thought provoking and amusing contributions by the Minister, members of the circuit, and others. It also lists planned preachers for each Sunday and diary dates. Editorship has been taken on by Peter Ellis and Paul Warren and it is expanding with each edition!

CHAPEL FLOWER PLAN for the months September to December							
SEP		OCT		NOV		DEC	
4 th	Mrs Eunice Hearn	2 nd	Mrs Joanne Carter	6 th	Mrs Mary Carter	4 th	Mrs Gwynneth Johns
11 th	Mrs Grace Millman	9 th	Harvest Festival	13 th	Mrs Anne Poole	11 th	Mrs Phyllis Piper
18 th	Mrs Ruth Sharp	16 th	Mrs Marjorie Colwill	20 th	Mrs Lillian Luxton	18 th	Christmas Flowers
25 th	Mrs Margaret Fishleigh	23 rd	Mrs Niggy Southey	27 th	Mrs Sheila Daniel	25 th	Christmas Flowers
		30 th	Mrs Valerie Harris				

For further information contact:

Rev David Wheeler, our Minister on Tel: 281262 (or via the stewards). Alan Andrew, Rural Lay Worker, on Tel: 281321.
Our Stewards: Marjorie Colwill (Tel: 281214); Sheila Daniel (Tel: 261466); Lillian Luxton (Tel: 261355);

IF God should go on strike

How good it is that God above has never gone on strike,
Because He was not treated fair in things he didn't like.
If only once He'd given up and said, "That's it, I'm through,
I've had enough of those on earth, so this is what I'll do."

I'll give my orders to the sun-"cut off the heat supply"
And to the moon-"give no more light and run the oceans
dry",

Then, just to make things really tough and put the pressure
on,

Turn off the vital oxygen till every breath is gone!"

You know He would be justified, if fairness was the game
For no-one has been more abused or met with more disdain
than God,

And yet He carries on, supplying you and me
With all the favours of His grace, and everything for free.

Men say they want a better deal, and so on strike they go,
But what a deal we've given to God, to whom all things we
owe.

We don't care who we hurt to gain the things we like;
But what a mess we'd all be in, if God should go on strike.

ANON

Holy Trinity Parish Church

Milton Damerel

Father Michael Reynolds

Tel - 01409 253435

Services

Mattins taken by the reader

Mrs Mary Ihelor

on 2nd Sunday every month
at 11.30am

Holy Communion taken by

Father Reynolds

on 4th Sunday every month
at 11.30am

Harvest Festival

25th September 2005

Everyone is welcome.

Affordable Counselling

Sally Klinenborg

BSc(Hons), Adv Dip Counselling & Psychotherapy

Telephone consultations, Home visits and reduced rates available

Tel: 07901 604288

Just when you least expect it!!!

There I sat, busily working at my desk when the phone rang.

Who might this be I thought, then answered the shrill tone not knowing the consequences of doing so could change my life in a flash.

This is how I was introduced to Trudi, we talked for about half an hour, immediately realising we have so much in common, arranged to meet at her home two days later and there I met Dean, Dean is kind enough to withdraw from our chatter and let us get on with it!

Trudi and I both have a passion for textiles and from this I learnt that workshops are certainly on the cards at Heddon Moor for those who would like to 'have a go' at a variety of creative pursuits including patchwork, beading, fabric dyeing, paper and felt making, doll making, machine and hand embroidery and how to design from start to finish.

Alongside the crafts, Trudi and Dean offer Bed and Breakfast accommodation and can be e-mailed at WillowMoonbandb@aol.com, or may be found on their website www.willowmoonbandb.co.uk

Dean is offering us a HANDYMAN service, decorating, tiling, plumbing and small electrical installation, all jobs considered, big or small and can be contacted on 01409 261624.

Having moved to 2 Heddon Moor Cottages only a short time ago, Trudi and Dean are keen to meet new friends and neighbours and invite anyone who would like to come along to a Coffee Morning/ Bring and Buy on Friday 9th September between 10.30 and 12 noon, with all proceeds going towards the newsletter.

A selection of Trudi's crafts can be found for sale at Lizzy's Larder with the name Willow Craft on the tag. To see more creations and to get a better idea of what can be produced at the workshops, come along to the coffee morning or give Trudi a ring on 01409 261624

All the best,

Edna Mortimer

Computer Sales and Services

- New Computers or Upgrades
- Anti Virus / Spyware advice & removal
- Training on Windows, Office, Email and using the Internet
- Installing Broadband, wired and wireless networks
- Onsite repairs – we come to you
- Fully equipped workshop using modern diagnostics tools
- Website design
- Maintenance packages for businesses
- General health check for home users
- PC support & advice
- Certified Microsoft System Builder
- Certified Network installer



Remedy-IT Ltd

Milton Damerel 01409 261775

sales@remedy-it.co.uk www.remedy-it.co.uk

NEWS... NEWS... NEWS.....

NEWS.....

NEWS.....

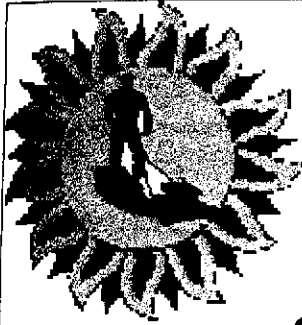
We need NEWS!!! Any NEWS ... What has been happening in your club or organisation? Where have you been? Who has visited your club? Are you the best in your league? Or are you stopping the other clubs falling through the floor?!

AND what about those important occasions within your families and for friends? Birthdays, anniversaries, successes, prizes ... We would love to include a congratulations, a well done, "haven't they done well!" ... but you are all so shy and forget to let us know anything at all.

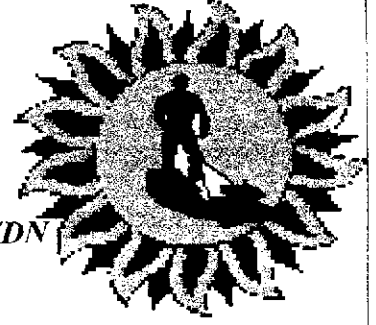
AND what about advertising any special events? Again we would love to publicise them for you – all free!

Please, please, help us In desperation we were tempted this time to give you a rundown on the parish cattle movements ... 'cos it seemed there is nothing else happening at all! We know that this is not so ... so please let us know anything, just anything at all

The next Newsletter will be published in late November so we can include all your Christmas events, celebrations, etc.



Sunnyside Garden Maintenance



Northtown Farm, Milton Damerel, Holsworthy, EX22 7DN

**Grass Mowing - Strimming -
Hedge Cutting
Rotovating - Weeding**

**All aspects of garden maintenance undertaken
One off visits or on a regular basis
Call now for a free no obligation quote**

***Tel/Fax No. 01409 261742
e-mail sunny@maint.wanadoo.co.uk***

THE AUTUMN – AN IMPORTANT GARDENING TIME – Bill Wrighton

The weather in the first half of July really made me feel that we would have a summer of reduced lawn mowing but I should have known better and by late in the month the rain had instigated vigorous grass growth, the rainfall was inevitable coinciding as it did with my much delayed move into the village.

After very warm spells of weather and particularly during thunder storms rainfall contains atmospheric nitrogen which is why lawns grow so quickly when only a few days earlier they looked to be dying, nature's fertilizer.

If you want a really good lawn then it is important to apply an Autumn lawn feed in September and if necessary moss or weed killers, this will encourage a healthy root system without vigorous top growth and give grass time to grow over any patches.

Late crops

Its now too late to sow any more vegetables but young plants are available for winter cauliflower, spring cabbage etc and can fill spaces where summer crops have been harvested.

Keep on top of the weeds which will proliferate when the autumn rains start, we expected these around August Bank holiday enabling us to plan to commence turfing contracts.

Autumn tasks.

Even though the summer bedding should still be looking really good you may want to plan for a splash of colour into the winter by planting baskets and pots with Universal pansies, hardy trailing plants etc and leaving them to one side ready to take over when the weather turns cold. The bigger the pansies are before it goes too cold to encourage growth the longer they will go on flowering before resting through the coldest spells then flowering again in the early spring.

September is the best month to trim many shrubs that have finished flowering, Senecio, Hypericum, Potentilla, etc as well as hedges which will have time to make just a little growth before the winter so not looking scalped for months on end.

When leaf fall occurs then fruit should be pruned, this timing has the advantage of not producing the masses of soft suckering type growth associated with spring pruning, the experts now advise us that treating cut ends is unnecessary so put away the Arbrex.

If you have a pool and suffer from blanket weed then try putting some Barley straw into it, the rotting straw which must be barley gives off a harmless chemical which helps to suppress the weed and has certainly been effective in my pool for the last few years, you can buy the extract in a bottle but they charge a fortune for it.

Parish Councils Historical Minutes

Due to popular demand I have included the names of council members.

16th April 1910 On the proposition of Mr J Brock and seconded by Mr J Slee. Mr C Watkins and Mr Quance were duly appointed to the office of overseers to the Poor of the parish for the ensuing year.

A cheque was drawn for ten shillings made payable to Mr Kinsman to meet election expenses.

4th July 1910 a letter which the following is a copy was received.

Devon County Education Committee
The Castle
Exeter
June 1910

Dear Sir

The education committee have resolved that the local committees for higher education shall go out of office at the end of July 1910, and that the Urban District Council or Parish Council as the case may be or if there is no Parish Council the Parish meeting shall be invited to submit names of persons willing to act on the new local committee; they have also resolved that a similar invitation shall be sent to the managers of public elementary schools.

The local committee appointed will have the general management of the evening schools and classes, including classes in agriculture and domestic subjects, in gardening, ambulance, etc. It is desirable therefore that each committee should be thoroughly represented and should include a proportion of ladies.

The committee have made no restriction as to the number of members of a committee, but as a rule these committees are composed of from six to twelve members, present members of committees are of course eligible for re-appointment.

If the Council is prepared to submit names I shall be obliged if they can be sent to me on the enclosed form in the course of the month of early in July.

Yours faithfully

J. H Young.

August 13th 1910

Dear Sir

The Post Office authorities are desirous of closing the Milton Damerel sub office on Bank Holidays at 12 noon as the telegrams dealt with after that hour is practically nil and the suspension of business on Bank Holiday as desired would give the sub-postmaster a chance of obtaining some recreation.

The nearest telegraph office open on a Bank Holiday after noon would be Shebbear or Holsworthy where urgent telegrams could be dealt with.

It is also desired to close the sub-office at 2PM on Wednesdays.

The despatch of the night mail would be at the usual time.

Telegrams on Wednesday afternoons are found to be very few, and any arriving would be delivered from Shebbear, Holsworthy or Sutcombe.

Kindly bring these matters to before the Parish Council as early as possible and favour me with a reply as to their views on these subjects.

Yours truly

? Hamlyn

Head Postmaster

January 23rd 1911 moved by Mr Slee seconded by Mr Larkworthy that the precept be served on the overseers for £5. to be paid to the treasurer on the 25th January 1911.

An application was made through Mr Slee from the residence of the eastern part of the Parish for a pillar box to be placed at Gidcott Cross to be cleared by the local postman on his return to Thornbury village. The clerk was directed to forward the application to the postmaster-general and to state that this council support the application.

March 25th 1911

With reference to your letter of the 25th January, I am directed by the postmaster-general to state, for the information of the Milton Damerel Parish Council that on enquiry, it is found that the circumstances do not warrant the establishment of a letter box at Gidcott Cross, and I am therefore to express the postmaster-generals regret that the councils request cannot be complied with.

April 22nd 1911

A letter was received from the local Government Board enclosing two copies of an order of the board authority parish councils and other public bodies to incur any reasonable expenses in connection with the public celebration of the coronation on the 22nd day of June of His Most Gracious Majesty King George 5th resolved upon the proposition of Mr C Watkins seconded by Mr J Brock that this council be guided by the wishes of the ratepayers in dealing with the matter and the chairman was requested to convene a parish meeting for the purpose of ascertaining the views of the parishioners upon the subject.

May 15th 1911

Proposed by Mr Hopper seconded by Mr J Taylor that the necessary funds be raised by voluntary contributions and not by a charity upon the poor rate and upon a show of hands there where for the motion 16

Against 6

The motion was therefore carried.

Italian Salmon



(enough for 2)

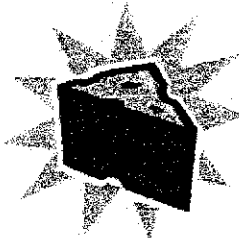
225g/8oz penne pasta
110g/4oz smoked salmon
55g/2oz peas frozen / fresh
1 tin plum tomatoes
2tbs tomato puree
2 cloves garlic
Basil to garnish

Place tomatoes and puree in pan.
Simmer for 10 minutes or until liquid has reduced by half.
Add chopped garlic- cook for 2 minutes.
Add the peas.
Cut smoked salmon into strips- add to sauce.
Heat salmon through.
Turn off heat and let sauce sit.
Cook pasta.
Add to sauce.
Garnish with Basil.



ANSWERS TO QUIZ P 4

1. All Breads
2. All fruits
3. All Soups
4. All Rice Dishes
5. All Cheeses



Citizens Advice is there for you.

Last year Bude, Holsworthy & District CAB helped local people solve 4074 problems and bought £808,832 into the area by helping people get the money they are entitled to. The charity also dealt with £1,296,103 worth of debt, helped people who were threatened with the loss of their homes and supported dozens of people who had been dismissed or unfairly treated by their employers.

The CAB has a vibrant workforce of paid and unpaid advisers who undergo rigorous training to become accredited advisers. Some of them bring a wide range of experience from their previous working lives, others use the training and work to help them into paid employment, and some have become advisers after being helped themselves by the CAB.

Check out the CAB Website
www.adviceguide.org.uk or contact your local Holsworthy office on 253372

D & I BRIDGMAN & SON

NEWTON St. PETROCK

TEL: 01409 261321

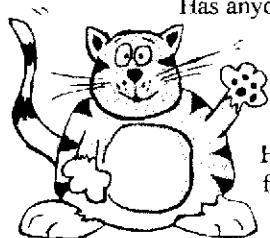
FAX: 01409 261520

**HOUSEHOLD FUELS
FENCING AND GATES
BUILDING MATERIALS
CLOTHING AND PET FOOD
ANIMAL HEALTH AND HUSBANDRY
YOUR AGRICULTURAL MERCHANTS**

*****SERVICE*****QUALITY*****PRICE*****

Whatever your requirements please give us a ring
Free delivery throughout the area

Has anyone lost a cat?



Has anyone lost a tabby tom cat some time this year, he is not a big cat, getting on a bit, I think, he has white feet and white under his chin. He is too affectionate to be a wild cat so has either strayed or been dumped. I say this year as he has been around for the best part of this year, if not longer, but always crept away, that was until I collected 3 kittens from the CPL, then he seemed to think that I had provided him with a harem for his old age and has since been found every morning sitting waiting for them to be let out to play. He is a very friendly cat, rubbing around my legs and purring very loudly for his food, he seems to prefer dry food to tinned. If he sounds familiar please come and see him as he would be happier this winter sitting in front of a warm fire not curled up on the hay in a cold barn. - Please contact Rose 261577



INTERIOR DECORATOR

**Friendly efficient service
for all your Decorating needs
including special paint effects**

**JANEY KIRBY
01409 261314**

I want to tell you a story, Part 2. by Rose Haynes



A couple of years ago I told you of our escapades with our Hampshire Down sheep, how we started breeding them and our first attempts at showing.

We have bred some nice sheep and enjoyed ourselves in the process. We've had our highs and lows like everyone. I became the secretary of the Hampshire Down SW Club about 18mths ago and really enjoy the position. We've made a lot of very good friends amongst the Hampshire Down people and find it quite surprising that although there is very strong competition between them, in and out of the show ring there is always friendly banter, never any nastiness. I have only ever received good advice and encouragement from them. After having shown dogs many years ago heard and seen the "catfiness" amongst doggy folk, this attitude

is a breath of fresh air.

Then of course there is the social life at the shows, as of yet I haven't woken up with a hang over the following morning, but I have had some very enjoyable and funny evenings where no one goes thirsty. Most mornings start with a good cooked breakfast which will see you through to the evening when even if it's pouring with rain some one will get a barbecue going and of course each show has its "Stockman's Supper."

My living accommodation for major shows has gone from basic to almost luxurious, I now have an extension canopy on my trailer (so that my "gas run fridge box" can sit on the tailgate, to give me more room inside) it's really like having a porch on the end of the trailer, giving me about 4ft extra living space, my wet boots and coats can be hung in it, my wet towel after a shower will dry without being in the way, the canopy has a zip to give me privacy, I have a little 2 ring gas burner with a grill all the luxuries of home except for a bathroom, for that I still have to run to the loo's which are usually situated quite a distance away.

As for the showing this year has been good, I managed a 3rd and a 4th at Devon County, three 3rd places at Royal Cornwall, a commended at The Royal, several 1st and 2nd rosettes at the local shows including a Reserve Champion, "Any Other Native Breed" at Launceston, a Champion, "Any Other Native Breed" at Woolery, culminating in the highest so far the Inter Breed Champion at Holsworthy Show. I felt so proud and nervous walking up to collect my cups knowing that I had got the best sheep at the show, knowing that she looked it, and it was my home show, the rain couldn't spoil that day.

The one sad thing is that we can't say thank you to the person who helped and encouraged us when we first started, without his advice we wouldn't be doing what we are now. In my original tale a couple of years ago I told how he helped me buying my first ewes, encouraged me to show my lambs and was always there with advice and help when ever we needed it. David Kirby, a good farmer, a good neighbour, a good friend.



The Higher Grawley Flock of Pedigree Hampshire Downs

For Sale

Shearling Rams and Ram Lambs

Scrapie Genotyped, MV Accredited, SRS

Mrs R Haynes, Higher Grawley, Milton Damerel, Holsworthy, Devon
Telephone 01409 261577. email rosehaynes@tiscali.co.uk

Local Aggregate Suppliers

Topsoil, Sand, Stone, Dry Concrete Mix
Cement, Chippings (Including Coloured)
Small bags available
Tipper service, 1-17 tonne loads
Collected or Delivered

RAW PIPER & SONS Est. 1975
Tel: Kerry Heights, Milton Damerel 01409 261439

Our local Male Voice Choir

Newton St. Petrock Male Voice Choir is known locally as 'The Newton Boys'. Over 50 years ago they were just that, a group of young men from the Baptist Church singing gospel songs around the area. Ruby Vanstone organised and accompanied them for many years, in which time their numbers had grown to around 12. Most were farmers and practices often had to be fitted around harvest and other fieldwork.

The choir was popular and the programmes of gospel songs and spirituals were just what many small chapels needed. With great delight the man along with wives and family (the supporters club!) would travel off to some place to be welcomed heartily at the door by a grateful steward. Many a time were the churches packed to the door with chairs down the aisles, condensation running down the walls. And then the supper-trays of savouries and sweets, lovingly prepared, and that welcome steaming hot cup of tea in cold chapel cups. Well, the choir is still going strong, now up to 20 members, all young at heart and with great stories to tell. At the keyboard is Millie, daughter of Ruby, who between them have given uninterrupted service for the entire life of the choir. Our music is still firmly based, which is the reason for the choir's existence. The chapels are now fewer in number but Parish Churches, halls and homes give us many invitations. The welcome we get is just the same and so are the suppers, especially in the country.

Spring 2005 has been a busy season for us with concerts at Buckland House, Milton Damerel, Gammaton, Halwill, Rowden and Rehoboth near Egloskerry. Coming up we have Buckland Brewer Sankey evening (28th. August) NFU harvest festival at the Queens Hall (9th October) Launceston Town Hall (23rd October). If any men would like to join us we would be delighted to see you. Ring David on 01805601247 for details.

Window Cleaner



Also Fascias and Gutters

Reasonable Rates
Ring David Seggons
01409 241702

Children

Our Children taught us how to share their thoughts,
To understand their moods their every whim
To think of other things in life than just we two.
In Babyhood – and even now – they worry us, they bring us joy,
We see them in reflections of ourselves,
That gesture - or the spoken word,
Now with children of their own to love
It is with pleasure we can love them too,
To see that same familiar smile
To hold their hand and know they are part of us –
So as life before us flows
We'll leave behind that greatest gist of love.

C Lovall

Lizzy's Larder

Local Farm Shop Tel - 01409 261440

Saturday 9^{am} to 5^{pm} Et Sunday 10^{am} to 1^{pm}

Wednesday 9^{am} to 5^{pm}

Also Bank Holiday Monday 10^{am} to 1^{pm}

Treat yourself and give us a try. You will be pleasantly surprised.

Shooting, swatting or drowning?

Of all the inventions bequeathed to the world by Sir George Sitwell, the eccentric father of the poet Edith, perhaps the greatest was a tiny revolver for shooting wasps! Seated in the grounds of Renishaw Hall in Derbyshire, the amateur landscape gardener would be found taking pot shots at passing wasps with limited success but enormous satisfaction.

More than 60 years after his death, the spirit of Sir George lives on. According to a flurry of correspondence from readers of the Daily Telegraph, the fine art of wasp shooting is alive and well. Which is more than can be said for many of the wasps involved!!

In the cycle of good and bad summers for wasps, 2004 was one of the worst recorded years. A combination of mild winter and warm spring created ideal breeding conditions and turned Britain into a nation of picnic and barbecue flappers during late summer.

The tradition of shooting insects goes back hundreds of years. Queen Christiana of Sweden had a pathological hatred of fleas in the 17th Century and is said to have kept a small cannon on her bedroom to fire shots at the insects!! More modern but debatably more practical suggestions include using a Berloque Pistole loaded with a 78rpm gramophone needle for wasps up to 6 feet, however one major disadvantage may be that as this weapon is classified as prohibited a five year jail sentence could soon follow! A less risky attack can be made with air guns. Some believe a blast of air at close range is enough, others say a homemade salt pellet is required to finish the job.

Among gun enthusiasts there is much debate as to whether shooting a trapped wasp is sporting whilst others recommend a target laced with jam. Alan Witherby of Milford on Sea, Hants argued that conserve is against the rules of natural justice. "Surely every self-respecting sportsman knows one does not shoot a sitting wasp. In Hampshire we shoot the driven wasp, high and fast flying. In a good summer I have been known to bag as many as one."

Another popular approach seems to be the high pressure hose and can combine the chore of watering the beds with the more exciting sport of wasp dousing. Other techniques include snipping on the window with embroidery scissors, a swift clout, ideally with a broadsheet, or a good douse of gin. For those with sufficient grit, nothing beats the thrill of extreme wasp fighting - a battle to the death without weapons. "Shooting wasps is for wimps" says Peter Sweetment of West Sussex. "I've been safely killing the little blighters with my bare hands for 40 years. A quick nip with the forefinger and the thumbnail and off with their heads".



All garden machinery
serviced and Repaired
Reasonable rates, Collection
and delivery available.



Telephone: 01409 261 466
or 07792079584



Professional pest controllers say one on one battles with wasps may be acceptable but amateurs should avoid taking on a nest. And while wasps can be a nuisance in late summer, in the spring and early summer they are beneficial, eating greenfly and other garden pests and at this time they are usually only aggressive when they or their nests are threatened by movement or a bright torch. However their behaviour and diet changes in July when they go in search of more sugar food. It seems that they get more aggressive when they have been eating rotten fruit. It's too early to say whether late summer will bring problems but it is still sure to provide plenty of opportunities for the dedicated hunters.

Do you attend a regular group club or society in the locality that might be of interest to residents? We are looking for things to do for all ages so if there is something you enjoy please let us know so that we can publish the details in our **What's on guide**.

Line Dancing

We are a small friendly group that meet at the Parish Hall every Tuesday evening.

Cost £1.50 each

New members are always welcome.

Contact Lesley on 261294

or Mary on 261248.



Parish Hall

Milton Damerel has a large well equipped Parish Hall with a stage and purpose built skittle alley that can be hired for all kinds of events and celebrations at very reasonable rates.

There are also tables and chairs which can be hired separately for functions offsite.

For more information or to book an event please contact Lesley on 261294.

'OVER 60' CLUB

Meetings are held on the 1st Tuesday of each month – except January – in Milton Damerel Parish Hall. The meetings commence at 2.30pm. Time for a friendly chat, a game of cards, bingo, speakers or other entertainment. Tea and biscuits are served, no charge, but a bring and buy stall which helps towards refreshments and general funds. There is an annual subscription of £4 per person. During the summer months there are day outings once a month at reasonable charge. In December there is a Christmas lunch, which is usually well attended and enjoyed. If you are over 60 – male or female – why not come along – new members welcome!

Useful Contacts

Police	0845 2777444
Post Office Services	0845 7223344
Family Workshop and Resource centre	01409 254272
Holsworthy Library	01409 253514
Holsworthy Medical Centre	01409 253692
Environment Agency	0800 807060
Floodline	0845 988118
Torrige District Council	01237 428700
Devon County Council	01392 382000
Crimestoppers	0800 555111
National Rail enquiries	0845 748 4950
Exeter Airport	01392 367433
Public Transport traveline	0870 6082608
Carers Helpline	0808 808 7777
Childline	0800 1111
The Samaritans	08457 909090
NHS Direct	0845 46 47
Age Concern	0800 00 99 66

Have you read a good book lately?

If so why not let us know. We would like to hear your book recommendations so that we can tell our readers. We would like to hear about books for all ages so come on tell us what you think.

Contact any of the newsletter team.

Putford W.I

For the June meeting the President Mrs M Lewis welcomed the speaker for the evening, Mrs Stevenson from Abbotsham, who gave a most interesting talk and demonstration on cookery. She demonstrated how to make Normandy chicken and duck with plum sauce, as well as some very tempting sweets. After enjoying a cup of tea and refreshments, members then discussed the business side of the meeting.

Winners of the competition for a savoury flan was Mrs M Martin and Mrs L Dawe.

For the July meeting we went to Northam Organics which was very interesting.



We also entered Holsworthy Show and won all three cups for Best Entry, Best Display and the entry with Most Points, which was won jointly by Mrs K Stevens and Mrs L Self.



Advertisements.

Conditions of acceptance. Orders for insertion of advertisements in this newsletter are subject to the approval of the members who may refuse or alter any copy. The newsletter and its members: - a) accept no liability for any loss or damage caused by an error or inaccuracy in the printing of any advertisement. b) Shall not be liable for any loss caused by the failure of the advertisement to appear on any particular day, in any specified position or page or by its failure to appear at all, and they reserve the right to refuse to continue its publication regardless of terms and conditions of any order or contract.

Trades Description Act 1968 - All traders are reminded of the need to ensure that goods offered for sale by advertisements comply with all relevant provisions of the above mentioned act.

To advertise in this newsletter contact Margaret on 01409 261486 for more detail

The deadline for submissions of articles and advertisements for the next newsletter is Friday 4th November 2005.

TO EVERY HOUSEHOLD - AN IMPORTANT SURVEY

Please let us have your views

MILTON DAMEREL PARISH COUNCIL

An enterprising group of young people in the Parish have asked us to consider setting up a play area somewhere in the Parish. The letter of 10th May 2005 received from 12 signatories:

"Dear Milton Parish Council

All the children of Milton Damerel get very bored over the weekends and after school. We would like to raise some money to build a skate park or just a park.

We would like to be able to have somewhere to hangout after school or at weekends.

We would like a plot of land about one acre. Somewhere out of the way of busy roads and houses. This would be a great pleasure for us children of Milton Damerel and would mean a lot if you could accept this.

Yours sincerely

Chloe Woodhouse, AGE: 12 And Lawrence Harper, AGE: 10 and Signed by 12 children

The Parish Council's reply dated 1st June 2005 was:

Dear Chloe and Lawrence,

Thank-you for your letter dated the 10th May 2005. At the next meeting of the parish council your letter was read out. The councillors are aware of your problem and do think that it would be good if you all had somewhere you could safely play. Finding money and land to provide a play area may take a long time but it was agreed that we would find out if this is in any way possible.

After the meeting I contacted a lady who is a rural community's support worker and she is going to find out what we would need to do or rather where we need to start. I hope to here back from her soon. I will keep you informed of any news.

Yours sincerely

Anne Binns (clerk for Milton Damerel Parish Council)

As a first step to looking into the feasibility of such a project we need to hear your views to be able to gauge the level of support there is from young people, parents, youth leaders and anyone having a view, in favour, or otherwise, of the parish council taking further steps to find a site, decide on the facilities to be included, calculate the probable costs, plan how it could be financed (eg obtaining grants, increasing the annual parish precept,) and of course, how it could be managed (eg a playing field committee). Lots of questions And we earnestly ask that you take a few minutes to give us your responses to the questions below. Without these our young people will be very disappointed, as we will not have a mandate to take the project forward, unless you give us your comments.



-----PLEASE CUT ALONG THIS LINE-----

NAME _____ TEL NO: _____

ADDRESS _____

How many children/young people in your household?..... Their ages:.....

Do you have regular visits from children who would use / access a play area? Yes / No If Yes, please state how many

Do you support the idea of finding a site for a play area in the parish? Yes / No

Where do you think it should be?.....

Have you a piece of land that you would rent / sale /donate for the play area? Yes / No

If Yes, we will contact you on a confidential basis to obtain more detail.

- | | | |
|------------------------|---|----------|
| Would you volunteer to | (1) be nominated to a playing area committee? | Yes / No |
| | (2) assist with drawing up plans? | Yes / No |
| | (3) assist with fund-raising? | Yes / No |
| | (4) help to look after the area? | Yes / No |

What sort of facilities would you like to see in a play area?

- | | | | |
|----------|----------|----------|----------|
| 1. _____ | 2. _____ | 3. _____ | 4. _____ |
| 5. _____ | 6. _____ | 7. _____ | 8. _____ |

How much extra, if any, would you accept in your local precept, which is currently £1200 annually, for:

- (1) a one-off cost for setting up the play area? Hopefully, grants could be obtained for this. £ _____
- (2) the annual costs of running the play area? Hopefully a committee would fund-raise to meet most of the costs. £ _____

Any Other Comments: _____

PLEASE HAND THIS SLIP TO A PARISH COUNCILLOR, THE CLERK, OR DEPOSIT IN SURVEY BOX LOCATED AT HORRELLS FORD GARAGE