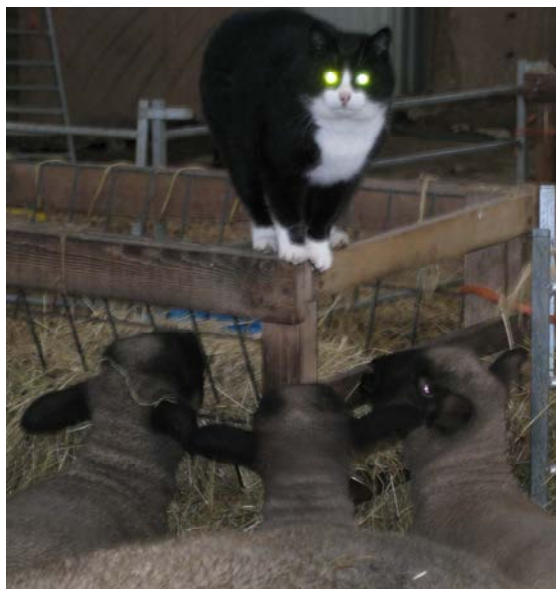




Milton Damerel Newsletter

Autumn Edition



Inside this issue:

Milton Damerel Parish Council	2
Congratulations	3
Church & Chapel News	
Walking Footpaths	
Parish Plan Update	
Milton Damerel Gardening Society	
Over 60s	
Parish Hall News	
Neighborhood Watch	

Milton Damerel Parish Council

Parish Clerk: Lorraine Buttery Tel: 01409 282956
3 Sunset Heights ,Shebbear E-mail: miltondamerelpc@btinternet.co.uk
Devon, EX21 5BN

Councillors; Grace Millman (Chairperson) 01409 261251
Stephen Moyse (Vice Chairperson) 01409 261151
Rose Haynes 01409 261577 Edgar Pett 01409 261277
Richard Piper 01409 261114 Jim Richardson 07866406977
John Webb 01409 261301

Meetings are usually held on the third Wednesday of each month. The agenda for all meetings are displayed on the notice boards no later than the Thursday before the meeting. Anyone is welcome but the public are not permitted to take part in discussions, however time is set aside on the agenda of all meetings for public comments.

As you all might be aware Roberta Jackson has retired as the Parish Clerk. At the meeting in June Roberta was thanked sincerely for her sterling work over the past six years, Roberta will be a hard act to follow. She has helped me immensely in settling into my new role.

Requests for annual grants should be made to the Parish Clerk , applications in writing should be accompanied with the latest set of annual accounts. All grants will be considered at the Parish Council Meeting on the 20th November , so please have your applications in by the 10th November.

Planning matters; The Parish Council was consulted on the applications of Wind Turbines, one at Kingsford Farm, Thornbury, on land at Down Farm, Thornbury and on land at Youldon, Sutcombe, Holsworthy, comments were made regarding the visual impact of wind turbines in the area. Another application received is for a single rear extension at Buttermoor, Milton Damerel.

Planning permission was granted by Torridge District Council for the conversion and extension of outbuildings to form an annexe, (amended plans) for proposed treatment plant sewerage, at the Meadow, Milton Damerel.

On the subject of renewable energy, Alison Boyle attended a recent meeting of the Parish Council and talked about the 'Atlantic Array', details are in the minutes of the June Meeting. At the same meeting Councillor Robin Julian gave his comments regarding renewable energy alternatives, e.g. wave and hydro power

Mike Jackson , Parish Path Partnership Scheme (P3) coordinator, reported at the June Parish Council meeting that the ladder stile had been repaired. Progress on the board walk on footpath 16 is currently on hold awaiting the outcome of the submission made to the Public Footpaths Liaison Officer..

The Parish Biodiversity CD presentation is now on the website. The suggestion from Matt Edworthy is that 'we build relationships with land owners'. He suggests that some hedges not be cut for two years to encourage wildlife. This is open for thoughts and discussion.

There has been several reports of 'Japanese Knotweed ' in the area and Councillors request Parishioners should be vigilant and report any sightings either to the Parish Clerk or direct to Devon County Council.

The Parish Clerk holds minute books dating back to 1894, it has been agreed to deposit these with the County Records Office for safe keeping, they will be readily available for all to view.

Freedom of information: Requests for information under the Freedom of Information Act should be sent to the Parish Clerk. Some Information can be made available by email free of charge, paper copies will be charged at 10p per A4 side. Copies of the recent Parish Council meeting agenda and minutes are now available on www.miltondamerel.com

Lorraine Buttery
Parish Clerk
18th August 2013



CONGRATULATIONS!

To Leslie & Lilian Luxton of Venn Farm, who celebrate their Diamond Wedding Anniversary on 8th October

To Bradley Howells of Glencoe, Venn Green, for being a member of the Tarka Group Young Farmer's Club Brains Trust (4 person) team who won the national title at Stafford.

To Philip Reed of Gidcott, who was nominated President of the Holsworthy & Stratton Agricultural Association Show for 2013. Also, **Jean**, as President's wife.

To Tom & Jane Gillingham of Shop Court, who won the Broken-coloured Pony under 14.2 Class at Chagford Show with their pony, Mignon Tiffany.

To Rose Haynes on successes at the Royal Cornwall Show, Okehampton & Holsworthy shows with her Hampshire Down sheep (see separate article).

To Iain Sharp of Lower Grawley, who achieved 3 A*s & 1B for his 'A' levels and will be going to the University of Birmingham to study Maths.

To Rosalind Sharp, of Lower Grawley, who achieved 6A*s & 4 A's for her GCSEs.

To Anthony McGeorge of Ley Farm, on the award of a scholarship to the University of Western Mexico.

To Tamsin Hoare who married **Andrew Beken** on Wednesday 26th June at Muddiford, Dorset, Tamsin is the Daughter of Janey Kirby of Buttermoor Farm. There was a belated celebratory weekend at Buttermoor on the weekend of August 17th/18th.

To Matthew Carter of Derworthy Cottages, who achieved 1 A*, 3A*s & 6Bs for his GCSEs

To everyone who completed examinations in the summer and are moving on to a higher school, to higher education or university, or apprenticeship, our best wishes

GOOD-BYE & WELCOME



Welcome to:

Adrian & Sue Moyse who have moved into **Old Trafford, Venn Green.**

Marc & Samantha Garrett and Henry, who have moved into **Higher Walland**

Goodbye & Best Wishes to:

The Elkins Family, who have moved from Heddon Cottages

Terri Brearley & Family, who have moved from Old Trafford

OUR SYMPATHIES



For those who been bereaved recently including:

The family of the late **Jane Elliott of Head Weir, Gratton.**

Jim & Marion Wooldridge of Mandor, Venn Green on the loss of Jim's mother,

Mrs Dorothy Wooldridge

The family of the late **John R Anton of Shipshape, Strawberry bank** some years ago.

Chapel News – September 2013

A Message from Rev Meg Slingo

Harvest Time

The Summer of 2013 is slowly beginning to come to a close. Gardeners amongst us would have benefited from the good weather we have enjoyed and watched their gardens *bloom*. Gardeners, above others, will appreciate the time and commitment that goes into planning and growing a garden. The time and commitment and loving care. *Some may say you get from a garden, the time you are prepared or able to put in.* Gardens are hard work. However, they are worth it when you may win first prize in the Horticultural show for the best grown marrow or turnip. Like many I enjoy spending time in the garden. To gaze upon its beauty and to watch the wild-life, the birds and the bees, the butterflies makes it all worth while and you can forget the hours of back breaking work, and wet, chilly mornings.

As Gardner's look at their gardens they see potential. They plan for the future. What fruits and flowers can be grown?

We are now entering the season of Autumn. For Christians this is a time of Harvest Celebrations, giving thanks to God for marrows and turnips and many other fruit and vegetables, and for the harvest of the fields and gardens.

In the Bible, within the book of St John chapter 15, God is referred to as the gardener and Jesus as the vine. As branches abide in the vine, so we are called to abide in him. As a vine in a garden needs time spent on it to produce the best grapes and wine so that the gardener and friends can enjoy the fruits of his or her labour. May we also understand that this Creator God can be known through Jesus. That he desires to produce spiritual fruit in us and a spiritual harvest through us. I pray that each one of us will find time to abide in God, that we will allow him to nurture us. God bless you Revd Meg

HARVEST FESTIVAL WEEK-END will be held from **Friday, 11th to Monday, 14th October**, with our normal pattern of activities – chapel open all day on Friday for delivery of donated produce and flowers and for decorating of windows and display areas around the chapel; Sunday Morning Worship led by Rev Ken Morgan, our Circuit Superintendent Minister; Monday Evening – Bring and Share Tea, followed by Thanksgiving led by Rev Meg Slingo, followed by auction of produce and flowers. Please come along and share in the celebrations!

CHAPEL FLOWER PLAN FOR THE MONTHS OF SEPTEMBER TO NOVEMBER 2013

1 st & 8 th September	Mrs Christine Poole	20 th October	Harvest Flowers
15 th September	Mrs Sally Piper	27 th October &)	Mrs Anita Southey
22 nd September	At Parish Church	3 rd November)	
29 th September &)		10 th & 17 th November	Mrs Phyllis Piper
6 th October)	Mrs Grace Millman	24 th November &)	Mrs Sheila Daniel
13 th October	Harvest Festival	1 st December)	

SUNDAY CLUB & FAMILY SERVICES –. The Sunday Club meets on the 2nd & 3rd Sunday of each month, Sunday Club is at 11am, joining with the morning service until about 11.20am, when we then go to our own activities. We will be delighted to welcome more young people looking for activities on a Sunday morning – just come along and join in. Please go to Junior News for report on the Sunday Club Anniversary in May.

The last Sunday each month is Family Service for everyone (all ages!).

Family Services:

29th September	27th October	24th November
Rev Meg Slingo	Mr Roy Down	Rev Meg Slingo

BIBLE STUDY – A group of 7-10 meet on Monday evenings at 7.30pm in the Schoolroom for Bible Study. We are an ecumenical group, drawn from Milton and neighbouring parishes, self-lead our studies and select the books of the Bible for study. We would be delighted to welcome anyone wishing to join us!

“OPEN CHAPEL” – The chapel will be open on the **2nd Friday afternoon of each month from 2.30pm to 5pm** for anyone wishing just to drop in for a chat, a cuppa or just to sit quietly, or to see the improvements to our premises.

CONTACTS – For further information or help please contact: Rev Meg Slingo, The Manse, Shebbear, Beaworthy, EX21 5SH (Tel: 01409-281262) Our Steward: Lilian Luxton (Tel: 261355), Our Church Council Secretary: Sheila Daniel (Tel: 261466), Our Caretakers: Steve & Sarah Weal (Tel: 261694)

A WEEK-END OF CELEBRATIONS

Mid-July a week-end of celebrations was held on the completion of much of the refurbishment of the buildings.



A Family Fun evening was held on the Friday evening with lots of side shows, treasure hunt, tombola, splat the rat, apple bobbing and so on. Much fun was had on the bouncy castle and energy expended in the sumo wrestling suits. No injuries were reported!! A bring and share supper was enjoyed by everyone.

Saturday saw the official opening. Again this was a glorious sunny day, just perfect for everyone gathered outside. Roger Daniel welcomed everyone, explained the improvements completed, and how the hot glorious weather had delayed plastering of end wall of the chapel, and introduced Mrs Beryl Harris, from Bude, a former pupil of Milton Damerel Primary School and former resident of Venn Green shop in her youth, who had come along to perform the opening ceremony. Beryl, now in her eighties recalled some memories of Milton, of how her grandparents, parents (Mr & Mrs Wallace Yelland), and her own wedding took place at the Chapel, along with her daughter's, Valerie, who also came along. Beryl had given a folder of family memories, photos and excerpts from a past school exercise book, which was placed in the history exhibition. Beryl also unveiled a wall plaque commemorating the original Chapel (opened in 1837 and now the Schoolroom) and the Village School, (Devon County Education Authority rented the Schoolroom, current Kitchen and ancillary accommodation), which was closed in 1972. Harriett Allin presented Beryl with a lovely Orchid, as a thank you from everyone at the Chapel.

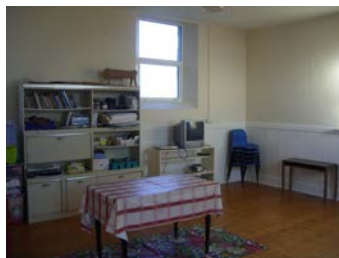
In the Chapel and Schoolroom there were many photos of past village events. The oldest school photo was taken in 1913/14, and there were many other school photos through the years, including the final ones taken before its closure. We saw some of the weddings that had taken place at the Chapel over the years, and youth club events, including a memorable trip to London to receive the Queen's Anniversary Award. There were photos of the interior and exterior of the current Chapel from the 1890s (it was opened in 1891) and through the 1900s, garden parties, village fetes, sports days, characters from the past, views around the village, and so on. There were also many documents of interest, maps, programmes and some memorabilia borrowed for the occasion from the North Devon Archives. The old school record and minute books dating back to the 1900's were particularly interesting; there were last in the village over 20 years ago. In them, we found there was quite a 'laid back' attitude to school attendance, for it seemed to be closed quite a lot - high days, holidays, harvesting, potato-picking and events at the Chapel, all led to the closure of the School!!

Teas and refreshments were served in the Schoolroom, again, another fantastic, waist expanding spread. Visitors were also invited to view the extent of the improvements that had been completed, being: demolition of old school toilets, old school kitchen and engine shed, and area turned into car park

- re-roofing, and new ceilings in kitchen and boardroom
- new floors in Schoolroom and boardroom
- new kitchen units
- new doors – schoolroom lobby and boardroom
- re-decoration of schoolroom, lobby, kitchen and boardroom.

[Completed since – new roof over organ recess and plaster end chapel wall.]

[Still to do – new door for schoolroom & finish wheelbarrow shed in graveyard.]



On Sunday, a few stalwarts got up early for a very leisurely breakfast and took part in the quiz around the graveyard and building. Family service at 11am was led by Mrs Julia Spencer, from Northam, and Frank Watson, a young local preacher in training, from Buckland Brewer. We were most grateful to those who took part in readings, including friends from the Parish Church, and William Allin, who helped Sheila with a presentation, The Basket of Fruit, based on Galatians Chapter 5.. Coffee was served following the service. We were open again in the afternoon for the exhibition and teas were served. It was a pleasure to welcome some friends from the past. The final event at 7pm, the Culm Valley Crusade Choir from Cullompton, who, although having several absentees, presented a really up-beat concert, bringing a great week-end to a fitting close.

Thanks were given for all who had come to the celebrations and to those who had contributed so much to making the week-end a great success.

Holy Trinity News

A new Rector – It has been some time since the Rector, Fr Michael Reynolds, retired. Easter 2011, in fact, the interregnum is now over and the Reverend Christopher Wilson Penn is the new Priest in Charge at Holy Trinity. He and his family have moved into the rectory in Holsworthy and the Installation Service will be in Holsworthy on 2 Sept. His first service at Milton will be the 4th Sunday in Sept, the 22nd, at 11.30. All parishioners are welcome to either of both Services.

Forthcoming Services:

Holy Trinity:

Sunday Service and Holy Communion - **22nd Sep** 11.30 AM

Harvest Festival – Sunday **6th Oct** 3 PM

Sunday Service and Holy Communion – **27th Oct** 11.30 AM

Sunday Service and Holy Communion – **24th Nov** 11.30 AM

Church Open Day 23 June

The open day at Holy Trinity was a great success, it was a bright sunny afternoon after some rainy days, the church opened from 3 until 5, it seemed to be a quiet start until 3.30 then things soon got going with plenty of people through the door. There were a number of new faces and visitors to the church and some familiar friends as well. I hope everyone found something of interest and the younger guests had a treasure hunt to complete making them search out details both inside and out. Information sheets were placed around the church, explaining the 750 years of history, in this one building, and the facts, theories, supposition or stories linked to much of the interior. How many births of new Monarchs of England have been celebrated in this church? Special attention was placed on the C14th South door and its sanctuary plate, the font, C17th century pulpit, C15th silverware and the imposing Royal Coat of Arms of which more history is being discovered all the time. Donations and the sale of afternoon tea raised a fraction short of £150 which makes a strong contribution towards some of the running costs and of course makes everyone's sterling efforts in support of the day worthwhile. As we discover more history, both ancient and modern, we will perhaps hold another event. The PCC minutes from the 1930-50s paint an intriguing picture of life around the Church and Church Hall (now Parish Hall), you should see the raffle prizes listed, a packet of cigarettes (not very PC), a chicken (it didn't say whether dead or or alive)! A real insight into Devon rural life of times gone by. Very many thanks to all who visited and contributed to a successful day.

Church Finances and Insurance

Church finances remain in a fragile state but the the recent events to raise funds have made a huge difference and within a few years we may be in a position to look at paying for some repairs to the fabric of the building. The usual running costs, insurance, Common Fund payment, electricity, safety inspections, gardening and the like all add up. We can now almost cover these annual outgoings from the money we raise each year from events and collections at services as well as the specific events to raise money for roof repairs.

For all this to remain affordable particularly the insurance premium, which at a few hundred pounds can only cover 3rd party liability, contents and theft, a decision was taken some years ago not to have buildings cover. The result of this decision, which will be reviewed each year, is that in the event of a catastrophic event there would be no money for the Church to be rebuilt. To add re-building cover would increase the premium to something approaching £2000 depending on the excess, and of course the excess would be into the thousands (where would we get that from?). The community should be aware of this reduction in cover and this article is a way of doing that. If you have any thoughts or comments on this situation please contact the Church Wardens.

Building security is a way to keeping insurance premiums as low as possible and without any secure outbuilding to store garden machinery and for the security of the other contents of the church keeping the church locked goes some way to keeping the premiums and excess in check.

There is a possibility of some future income, though it isn't without potential controversy. The applicant for two local wind turbine projects has offered to make a donation to Holy Trinity, if successful and once commissioned, every year for the expected life of the projects. These donations would go much of the way to cover current running costs allowing the church to concentrate future fund raising on building maintenance and community work rather than just getting enough money to maintain the status quo. The donations are offered and would be received as any other unconditional donation.

Church Gardening

Church gardening, actually in summer it usually means cutting grass, continues although with the extra session mid-month we have really kept on top of the work and I hope those who use the footpath or just visit the churchyard can see a real difference. The BBQ to finish the July gardening session was well attended again and thanks to those who brought supplies and themselves to take part, your support is very much appreciated and over £80 was raised from donations.

The grass is now quite manageable and in mid August we actually had time to do something else. Windows were washed both inside and out, only some though, the ones we could reach all the window, rather than just leaving a stripe halfway up. Longer ladders will be needed for the others.

Future Dates are:

Thursday 5th September 6-8PM

Friday 20th September between 2-6PM

Friday 25th October between 2-6PM

Friday 22nd November between 2-6PM

St. James Parish Church

Abbots Bickington

Tel: 01409 241411

ABBOTTS BICKINGTON CHURCH

HARVEST FESTIVAL SUNDAY 6th October 2013. 3.00 All welcome.

WHIST DRIVE Saturday 9th November 2013. 7.30 for 8.00. Will be held at Milton Damerel Parish Hall.

HORRELSFORD GARAGE



01409 261212



W.SANDERS & SONS LTD

MILTON DAMEREL, EX22 7NU

- * ALL MAKES CAR & LIGHT COMMERCIAL REPAIRS & SERVICING *
- * 24 HR BREAKDOWN & ACCIDENT RECOVERY *
- * PETROL FORECOURT INC LPG, OFF LICENCE & SHOP *
- * CLASS 4 MOT TEST CENTRE * FIAT AUTHORISED SERVICE AGENT *
- * FAMILY RUN FOR OVER 100 YEARS *



For any further information please ask for

Rex or Denyse (Workshop) Penny or Sue (Petrol Forecourt)

Bradworthy Primary Academy are currently building the new Pre-School and the new Hall details of that can be found on their website <http://www.bradworthyprimaryacademy>

New term starts Thursday 5th September 2013

Are you a
parent, grandparent, or child carer,
interested in a

Mother & Baby / Toddler Group

In Milton Damerel?

Please come along to the Chapel Schoolroom at
10.45am on Thursday, 12th September

to meet Beth Simmons of the
Bluecoats Children's Centre (Torrington).

This initiative is supported by the Bluecoats & Holsworthy
Children's Centres

**Bradworthy & District
Ploughing Association**

Annual Ploughing Match Farm Produce & Vegetable Show

Friday, 13th September 2013
At

**Cleave Farm,
Newton St Petrock
EX38 8LY**

Contact Lucy James for a schedule and more detail
01409-261433 l.james.soldon@hotmail.co.uk

Milton Damerel Methodist Church

Harvest Festival Week-end

Friday, 11th October to Monday 14th October

Friday, 11th – Chapel Open for Decorating

Sunday, 13th – Morning Service at 11am

led by Rev Ken Morgan

Monday, 14th from 6.30pm – Bring & Share Tea

Thanksgiving led by Rev Meg Slingo

Auction of Produce

***Please come along and join with us at any time over
the week-end to celebrate Harvest!***

Afternoon Tea & Cakes

Saturday, 26th October from 3pm

Proceeds for Holy Trinity Church Renovations Fund

Pilates

Taster session with Diane Sluggett
in the Milton Schoolroom on

Monday, 2nd September at 11.30am

Come and give it a try for free.

Pilates is exercise that develop core strength and
restore natural postural alignment, enhance co-
ordination and flexibility. A complete body work out and
enjoyable way to exercise the whole body. Suitable for
all ages.

St Peter's Church, Thornbury

Coffee Mornings

10.30am – 12noon

Raffle, cakes, plants, bric a brac

Saturday, 7th September

Half of proceeds to

Devon Historic Churches Trust

(who have helped and supported St Peters
so much over past few years)

Saturday, 5th October

For St Peter's.

Harvest

Friday, 20th September at 7.15pm

Service with Kathy Roberts

Sunday, 22nd September at 9.30am

Holy Communion – Kathy Roberts

Do you order on line? If so, you might like to look at
easyfundraising.org.uk – this is a great opportunity to
support local organisations and charities without actually
having to give any extra. You simply log into
easyfundraising.org.uk when you want to purchase goods
from Tesco, Waitrose, Next, Amazon plus 1000's more
companies and they will give a percentage of your spend to
your nominated charity. It really is that easy! Please have a
look and select Thornbury Church, we have already received
a donation of £24.70 for the first quarter. Any questions
please e-mail liz@kinsfordfarm.plus.com

We raised £62.40 on Wednesday, 14th August at the Cake &
Bake Sale in Holsworthy Square – thank you to everyone who
donated and helped on the day.

Holsworthy Beacon Methodist Church

Harvest Festival

Sunday, 22nd September at 11am & 6.30pm

COFFEE MORNING

Last Thursday of each month

10am – 12 noon Chapel Hall

Warm welcome to all!

NEIL DAVIES ASSOCIATES
CHARTERED ACCOUNTANTS
AND BUSINESS ADVISORS

The accountants you deserve for:

Preparing Annual Accounts
 Tax Planning and Tax Mitigation
 Wealth Creation and Preservation
 Business Planning and Growth

FREE initial consultation available at your business premises, at your home, or at our office. FIXED FEE quotes available on request.

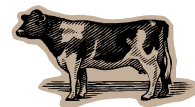
Prompt, Professional and Friendly service
 Neil Davies F.C.A. and Graham Johns F.C.C.A.
 BSc (Hons)

Tel: 01288 350616, Mobile: 07972765312

Email: Neil@neildaviesassociates.co.uk

Web: www.neildaviesassociates.co.uk

Bude Business Centre, Kings Hill Ind. Est. Bude,
 Cornwall



A1 Cattle Services Ltd

Foot Trimming

Contact: Trevor Chambers

On

07737838096

Or 01409 261787

(over 22 years experience in the agricultural industry)

2, Fore Street, Milton Damerel

RAW PIPER & SONS

Est. 1975

Kerry Heights, Milton Damerel

Your local aggregate suppliers for:

Top Soil, Sand, Stone, Dry Concrete Mix, Cement
 Plum Slate, Chippings (Including Coloured) Terram

Small bags & Dumpy bags available

Collected or Delivered

Tel: 01409 261439



Humphrey Pullar Chimney Sweep
 NACS Registered & HETAS Approved
 Fully Insured
Professional Chimney Sweeping Service

- * Full Brush & Vacuum Service
- * Pots, Cows & Birdguards Fitted
- * All Types Of Appliances & Flues Swept & Serviced
- * Traditional & Powersweeping Techniques
- * Chimney CCTV Surveys
- * Bird Nests Removed
- * Smoke Testing



The Old Barn, Pancrasweek, Holsworthy, Devon, EX22 7JN
 Tel : 01409 240138 Email: humphreysweep@mac.com

The Complete Knight Ltd

Children wooden sword and shields plus
 colourful knights tabards, archery sets,
 traditional toys

Top quality children's historical character dress
 up outfits for home, schools and museums

Made in Devon

www.completeknight.co.uk

Mount Pleasant, Strawberry Bank, Milton Damerel, EX22 7DH
 01409 261353



Parish Clerks.....

...welcome to our new Clerk

After several weeks of advertising and enquiries, the Parish Council joined with Sutcombe Parish Council to recruit a Parish Clerk able to take on the duties for both councils. We have appointed **Mrs Lorraine Buttery**, who recently moved to Shebbear and recently retired from employment based in Exeter. Each Parish Council has appointed Lorraine as Parish Clerk, and so we continue to operate independently. However, we expect there will be benefits for her from only needing to deal with correspondence, etc., once and for both parish councils learning from experiences of the other council!! Lorraine took up post from 1st July 2013, and details of how to contact her or to obtain information are included in the Parish Council report on Page 2.

..... and thank you to....

Roberta Jackson, who had served as Parish Clerk for 6 and half years and provided a much appreciated loyal and dedicated service to the Parish Chair and Councillors, and for the benefit of the parish as a whole. Roberta applied for the 'job', in 2006, not having any previous experience of council 'workings' and limited knowledge of the parish, having recently moved to Venn Green. However, she brought to the 'job' her experiences from her previous employment in banking and, with Mike, running a post office, together with an eager mind to learn about the area and to be fully involved in local community life. All of these attributes resulted in Roberta gaining a detailed and valuable knowledge about the parish, footpaths, etc., and a strong involvement in parish matters, for the Parish Council, and for such initiatives as the Parish Plan and the Diamond Jubilee celebrations.

So we record a large 'Thank You' for her work as Parish Clerk and, of course, still look forward to her continued involvement in our community life. On a personal note, as Chairman of the Parish Council, also thank Roberta for all the work she undertook to recruit a new Clerk, and in preparing for the hand-over and then spending time with Lorraine to hand over!.

Grace Millman

Parish Council Chair

For info.....

The post of Clerk is much more than 'just taking minutes of the parish council meetings'..!! The clerk receives all correspondence for the Parish Council, reads and advises on what needs to be discussed and acted on by Councillors, responds to this correspondence and follows through the many issues that arise within the parish, and compiles agendas and prepares minutes of meetings. In addition, the Clerk is our Responsible Financial Officer, and this requires preparing annual budgets, monitoring the income and expenditure, keeping financial records, including the PAYE for their own post (!), and preparing the annual accounts for internal and external audit. Much of these activities are handled electronically – e-mails, spreadsheets, etc., and computer literacy is essential.

Walking Parish Footpaths

The programme for the Inter-parish footpaths walks for the rest of the year is set out below:

9 September	Pyworthy	Meet at Pyworthy Village Hall car park
14 October	Bradworthy	Meet in The Square
11 November	Milton Damerel	Meet in the Parish Hall car park
December	No Walk	

The much better weather over the past few months has seen more people turning out to support the walks and explore parts of their parishes that they had not seen before. These walks are intended to check on the current state of the footpaths and point out any problem areas so will therefore be walked at a casual pace. All walks will have a leader who may decide on the day, that if conditions are unsuitable for the proposed walk, to change the route. The nominated leader will always turn out, come rain or shine. Everyone is welcome but please be aware that some paths may be wet and muddy, depending on the weather, and suitable footwear and clothing is advised. All walks will start at 10.00 and aim to finish by noon.

For further information contact Michael - 01409 261196 or Robert - 01409 254211

JUNIOR /YOUTH NEWS

Milton Monsters

We now have a short break until October to allow everyone to get over the holidays and get back into their school routines.

A couple of craft afternoons were held during the holidays. Many thanks to the willing band of helpers who gave up time to do these!

Sunday Club

Sunday Club Anniversary.... And a Special Visit

This was held at the end of May to celebrate the work of the Sunday Club. The young people took part in prayers, readings and poems, all on the topic of Water, Water Everywhere, choosing selected stories about water from the Bible. There was also a quiz for the congregation to take part in. We were delighted to have Alan Randall, from Torrington, with us who greatly enhanced the service with his technical skills, using video clips and pictures on the overhead projector and screen.

We were also delighted to be joined by the Pallister family from the London & Kent areas. They were staying at the Woodford Bridge Country Club for the week-end. Grandfather, Nelson Pallister was celebrating his 70th birthday and had invited his family, over 20 of them, to join in with this special event. The family led the second part of our anniversary service; Nelson gave his testimony of his faith in God and salvation through Jesus Christ, recalling how his grandfather had also, on his 70th birthday, preached to his gathered family about his life of faith. Other family members played guitar, violin and trumpet and played their instruments, accompanying the hymn singing.

After the service, we all joined together in a bring and share buffet lunch in the Schoolroom and were able to get to know the family better. About 40 of us really enjoyed a lovely friendly meal.

Focused on Farming

www.bridgmans.co.uk

**Animal Health | Feed Supplements | Stock Handling Equipment
Fencing and Timber | Crop Packaging | Fertilisers**



- **Newton St Petrock** T: 01409 261321
- **Kilkhampton** T: 01288 321777
- **Kentisbury** (distribution centre only) T: 01271 889239

Bridgmans Direct Sales: Heating Oil • Tractor Diesel • Derv T: 01288 322104
All at very competitive prices. Delivery available throughout Devon Cornwall and Somerset



MILTON DAMEREL PARISH EMERGENCY PLAN

Readers will recall that, two years ago, the Parish Council formed an Emergency Response Team and published an Emergency Plan. It is reassuring that the plan has not had to be put into effect and, hopefully, never will be! Nevertheless, it is necessary to keep it up-to-date – just in case the unforeseen happens. Also, it is useful to remind parishioners that planning for emergencies has been conducted on their behalf.

Plan Update

Comments, suggestions or questions concerning the plan may be taken up at any time with any member of the Emergency Response Team.

The Team will carry out an annual review of the plan in September.

Emergency Response Team

Clifford Fishleigh
Gary Flack
Roger Lawes (Co-ordinator)
Kate Moyse (Secretary)
Steve Moyse
Edgar Pett
Phillip Reed
Trevor Sanders
Gareth Smith
Bev Tree
John Webb

Vulnerable People within the Community

It is not considered viable to maintain a list of individuals or groups of people living in the parish who may be considered to be vulnerable. Nevertheless, depending upon the nature of a particular emergency, a priority at the time will be to establish such a list. In the meantime, if anyone does wish to notify the Team of a vulnerable situation or specific needs then they should inform one of the Response Team members.

Newcomers to the Parish

For those who have moved into the area during the past two years, and who wish to see the plan, they may see a copy held by the Parish Clerk. A précis (copies of which were sent out previously to all parish households) is attached to this newsletter.

GRASCOTT FIREWOOD

Quality Seasoned Firewood

£85: Single Load

£160: Double Load

£230: Triple Load

Delivery charges may apply

Tel: 01409 281393

E-mail: grascottfarm@btinternet.com



What a year.

What a year it has been at the shows this year, so different compared to last year when every day it seemed to rain and so many of the shows were either abandoned or so wet and muddy there was no pleasure in attending, this year the sun has shone at most of them.

Devon County was a bit of a disappointment, after being told we had a very good ram lamb he was placed 3rd in his class. Royal Cornwall proved that he was, after winning the Hampshire Down Trimmed ram lamb class he went on to be breed Male Champion and Breed Champion. The following day he won Interbreed Champion Ram Lamb and finally Supreme Interbreed Champion.



At the local shows his brother has won 3 Champion & 3 Reserve Champion rosettes, being unbeaten in any of his classes, only being beaten in Championship classes and then being the Reserve Champion. The ewe lambs have also done well, with one or other of them winning their class and one being Reserve Champion to the ram.

This success is all thanks to 4 lambs and of course one rather old ram called What What and his small select flock of ewes.

Rose Haynes

CHILDHOOD

The changing scene of village life
 I see each passing year
 Where we picked up conkers and made an icy slide
 Is now a site for building, on new roads we'll drive
 In these same lanes we skipped and played
 at marbles and hop-sotch, used our coats for goal posts
 these games meant so much
 As evening shadows lengthened, to darken narrow lanes
 Our play would be of Horse and Hound,
 We ran through fields, climbed over stiles,
 Our voices rang – an echoing sound
 With aching legs and cheeks aglow with fresh cool air,
 Back to our cottage homes we'd go
 To see the oil lamps flickering there
 Log fires were burning in the hearth
 Another childhood day had past
 As we climbed the narrow stairs
 We heard the night owls hooting call
 Sleep came with peace of shadows dancing
 From candle light on whitened wall

Carrie Lovell

DIAMOND

THE CUTTING EDGE IN

**PROFESSIONAL
 CARPET, CURTAIN
 & UPHOLSTERY CLEANING**

Domestic & Commercial

- **Deep Hot Water Extraction Cleaning**
 - **Deodorising Treatments**
 - **Dust Mite Removal**
 - **Leather Cleaning**
 - **Stain Protection**
 - **Stain Removal**
- Other treatment
also available

**OUR PRICES ARE HARDER THAN A
 DIAMOND TO BEAT**

**Call us now for a
 FREE ESTIMATE**

**Call Mike on Holsworthy
 01409 254816 or 07855 275088**

The Milton Damerel Gardening Society

Our June meeting was a first for the society with members deserting the Hall to assemble in David Fishers garden at Gratton where he showed us his vineyard and explained why he had planted 200 vines, how he is looking after them and what he expected to get from them once they start to crop.

This was a most interesting evening which included a tasting of last year's vintage, the evening was rounded off with a tour of their immaculate garden followed by light refreshments supplied by Mr and Mrs Fisher during the consumption of which they were bombarded with further questions regarding grapes.

July and August are the summer holiday for the society so there were no meetings.

The Autumn programme kicks off with the Garden Show on Saturday 14th September, after the long hot summer we have just had we are hoping for a bumper turnout of entries and anticipating some exceptionally large vegetables in the relevant categories.

Show Schedules are available by e-mail from billwrighton@hotmail.com, from the garage or direct from any committee member, remember there are lots of none gardening classes you can enter including Arts and Crafts and Culinary sections.

PLEASE MAKE THE EFFORT TO ENTER IT IS THE ONLY WAY THE SHOW WILL SURVIVE.

Our October meeting will be addressed by Mr. Bell who holds a National Collection of Bamboos near Bodmin and as one of the few plants that have thrived in my garden I look forward to his slides, descriptions and cultivation advice.

In November Bowden Hostas will present an illustrated talk on Hostas and Ferns both of which they specialise in on their nursery near Barnstaple, Hostas are very susceptible to slug attack but they do grow well in wet conditions which we experience in this area so some hints on preventing

damage could enable us to grow plants that actually like our wet soil.

ENTER EARLY NECESSARY

This years Show includes a new children's category for the largest Sunflower (overall height x width of flower) if you would like to enter then contact Bill on 01409 261738 or e-mail billwrighton@hotmail.com so a judge can visit before the show.

Bill Wrighton

The Barn Cattery

East Wonford, Milton Damerel, Holsworthy

- Resident Proprietors
- Choice of indoor or outdoor pens
- 'Cats only' Establishment
- Special rates for long stay
- Collection/delivery service
- Only inoculated cats accepted
- Heated chalets for individual or families



Inspection invited

Tel: 01409 261105 www.barncattery.com

Parish Biodiversity Audit for Milton Damerel

The guest speaker at the Annual Parish Meeting, Matt Edworthy, Northern Devon Nature Improvement Area Outreach Officer, referred to the Parish Biodiversity Audit for Milton Damerel, and showed an overhead of a map identifying the important features, for Culm grassland, copses, wildlife, and plant species, etc., within our parish. Subsequently he has forwarded to the Parish Council the CD containing the full report and map, which has been loaded on to the parish web-site, www.miltondamerel.com under the local information section.

The Parish Councillors reviewed the content of the report and, in particular, felt the content of the report should be reported on in the newsletter and encourage those interested to access the web-site to see details of the analyses. The following areas are selected in the analysis:

Chapman's Green County Wildlife Site, West Bridge Fields and Bridge Copse County Wildlife Site; the Ancient Woodland sites of Gidcott Wood, Gidcott Mill Wood, Grawley/Knott's Woods, Churchpark Wood, Milton Mill Wood, and Woodford Woods.

In addition, there are 10 unconfirmed wildlife sites, which have identified from aerial photograph interpretation, and to verify the conclusions the North Devon Biosphere Service are hoping that landowners will respond by permitting access to these sites for further survey work to be undertaken. This can be arranged by contacting the Parish Clerk or contacting Matt Edworthy direct (Tel: 01271-388508). The sites identified are:

Brendon, Knotts Wood, Halsepark Wood, Morecombe, Whitebear Farm, Derworthy, Hill Copse and Meadows, River Waldon Meadows, Woodford Woods, Woodford Bridge – Newton Mill Marsh

Also within the report there is a section "Some Ideas for Local Action..." with the comment that 'Ultimately, the protection and enhancement of the local natural environment requires the interest and enthusiasm of the local community.' The list included refers to:

- Further survey – eg a hedgerow appraisal undertaken as a community group
- Management of Public Open Space
- Build relationships with local landowners
- Adopt a road verge
- Wildlife gardening
- Join local conservation organisations

Japanese Knotweed – information on how to report any in our parish was included in the last newsletter.

If you have an interest in pursuing any of these ideas, please let the Parish Clerk know, as Matt Edworthy may be able to support any initiatives within the parish and will visit the parish again to talk about any proposals. If you do not have internet access, a hard copy of the report can be provided.

N.J.BALSDON

Plumbing & Heating Engineer

Central Heating Systems

Underfloor Heating

Boiler Installation & Servicing

Bathroom Design & Installation

Oil Tank Replacement

Plumbing & Maintenance

Emergency service

Wall & Floor Tiling



Tel: (01409) 241621/07778 803241

Bradworthy, Devon



Registered Installer

Recipes for Children:

Marshmallows dipped in chocolate

Cooking time

Prep: 10 mins **Cook:** 5 mins Plus setting time

Skill level

Easy

Servings

Makes 26 approx

Kids will love making these sweet chewy lollipops decorated with melted chocolate and cake sprinkles

Ingredients

- 50g white chocolate
- 50g milk chocolate
- selection of cake sprinkles
- 1 bag marshmallows (about 200g)

1 pack lollipop sticks

Method

Heat the chocolate in separate bowls over simmering water or on a low setting in the microwave. Allow to cool a little.

Put your chosen sprinkles on separate plates.

Push a cake pop or lolly stick into a marshmallow about half way in. Dip into the white or milk chocolate, allow the excess to drip off then dip into the sprinkles of your choice. Put into a tall glass to set. Repeat with each marshmallow.



Recipes for Adults

Plum & almond crumble slice

Cooking time

Prep: 15 mins **Cook:** 1 hr, 5 mins Plus cooling

Skill level

Moderately easy

Servings

Cuts into 16 slices

A buttery traybake, full of new-season fruit and spice

Ingredients

- 250g pack butter (this must be very cold)
- 225g caster sugar
- 300g ground almonds
- 140g plain flour, plus 25g/1oz
- 2 eggs
- 1 tsp cinnamon
- 1 tsp baking powder
- approx 6 plums, stoned and cut into sixths
- 50g flaked almonds

Method

Heat oven to 180C/fan 160C/gas 4. Butter and line a 20 x 30cm baking tin with baking paper. Put the butter, sugar and ground almonds into a food processor, then pulse until the mixture resembles very rough breadcrumbs. Spoon out half the mix into a bowl and set aside.

Add 140g flour into the mix in the processor and whizz until it just forms a dough. Tip into the tin and press down with the back of a spoon. Bake for 15-20 mins until golden. Leave to cool for 10 mins.

To make the filling, put the remaining butter and the sugar and almond mix back into the processor, saving a few tbsp for the topping. Add the eggs, the 25g flour, cinnamon and baking powder and whizz to a soft batter. Spread over the base.

Top with the plum pieces and a little extra caster sugar and cinnamon. Bake for 20 mins, then sprinkle with the remaining crumble mix and flaked almonds. Cook for another 20 mins or until golden. Leave to cool in the tin before slicing.



GARDENING WITH RESULTS

After a wet and windy start to the year the weather became very encouraging, after failed seed sowings in the last few years this years sowings were an unmitigated success, unfortunately this led to me being taken by surprise with gluts of vegetables in July/August especially carrots, beet and lettuce.

Runner beans grew really well and quickly reached the top of their canes with plenty of flower but the really red hot weather, temperature into the 30's, was a bit too much for them and most of the flower fell off without setting any beans, they do like it warm and wet but not tropical heat, it was mid-August before I had my first decent picking.

The pumpkins I planted out in June have thrived and many fruit have set, I am not expecting any world beating results but a few for Halloween would be nice.

We were lucky that just as the hot dry spell was about to do serious damage to even established plants it broke with cooler temperatures and most importantly quite heavy rain, I for one was grateful for the break from continually having to water everything in a pot.

Many lawns suffered with the grass getting burned in the sun, I would never advise watering lawns this is a colossal waste of water when the roots will survive and regrow anyway once we get rain, when the lawn has greened up again you could give it a bit of a boost with a liquid or granular feed, I would leave any weed treatment until the following spring letting the grass recover from the extreme conditions.

JOBS YOU CAN DO NOW

The summer bedding may still be looking good but by the end of September you should be planting winter bedding, pansies, polyanthus, primroses, wallflowers etc. to give them a chance to establish some new root before the winter sets in, well established pansies will often flower throughout the coldest months.

Some vegetables can still be sown outdoors though they may not mature until the following spring e.g. cauliflower, lettuce, onions, spinach and turnips, these and many others would benefit from growing under cloches or in polytunnels.

In October onion sets and garlic cloves can be planted, autumn plantings produce better and earlier results than spring plantings.

Keep deadheading all flowering plants including roses and dahlias which are cut and come again plants.

Late in September I like to trim my hedges hopefully giving them time to make a little new growth before the worst of the winter weather sets in that way they look a little more natural for the coming months not the box like appearance of newly cut hedges.

Roses should be trimmed before the winter as soon as they finish flowering, usually in November, as a general rule of thumb reducing the growth by between a third and a half will help to minimise the risk of root rock due to windy conditions, in the spring further pruning may be required depending on the type of rose you are growing.

September/October are good months for planting container grown shrubs and herbaceous giving them time to establish new root while the ground is still warm and moist this will enable new plants to grow away quickly next spring.

New strawberries planted in September will have a chance to become partly established before the winter meaning they will produce a limited but usable crop in their first year, autumn planted asparagus will establish quicker and may produce edible spears a year earlier than the normal 3 years.

Happy gardening,

Bill Wrighton.



Window Cleaner

**Chimney Sweeping
Reasonable Rates
Ring David Seggons
01409 241702**

Now offering a new service
Carpet cleaning, £2.50 per m/2

Schools Designations - An Update

On 22nd August the following e-mail was sent to the Chair of the Parish Council by Andrew Brent, Policy and Strategy Officer (Education) for Devon County Council.

"We have received the determination of the Adjudicator which has approved the request and, consequently, the designated area for Sutcombe has been extended to cover the southern part of the former West and East Putford designated area and also the area around Milton Damerel. This has immediate effect and will be reflected at www.devon.gov.uk/schoolareamaps shortly for 2013-14 and 2014-15.

Points to note from this:

- Milton Damerel remains in area for Bradworthy: the academy has not sought an amendment to its area.
- The northern part of the former West and East Putford area does not have a designated school at primary level: the LA did not seek to extend the Sutcombe area so far and the academy did not seek an amendment to its area. We will monitor admission requests from this area to see if there is any impact on local residents. We would not expect there to be an admissions disadvantage in the short to medium term at least as numbers across the area are generally low. However, the LA's preference is for every address to have a designated school at primary and secondary level. We would support the academy should it seek to vary its designated area to include the northern part of West and East Putford's former catchment.
- The northern part of the former West and East Putford area will be recognised for the purposes of transport entitlement as if it were designated to Bradworthy.
- Children already receiving or approved for transport on designated school grounds from Milton Damerel to Bradworthy will continue to receive that transport for the remainder of their time at Bradworthy and living at the same address."

Extract from the Adjudicator's Determination:

DETERMINATION

Case reference: VAR/000611

Admission Authority: Devon County Council

Date of decision: 19 August 2013

Determination

In accordance with section 88E of the School Standards and Framework Act 1998, I agree to the proposed variation to the admission arrangements determined by Devon County Council, the admissions authority, for Sutcombe Community Primary School, a community primary school from September 2013.

I determine that the relevant area for the school will be the southern half of the geographic area comprising the combined former designated areas for Sutcombe Community Primary School, Bradworthy Primary Academy and West and East Putford Primary School. This area includes Abbots Bickington, Bulksworthy and Milton Damerel



A fine Indian Restaurant in the centre of Bude,
with New Management and a growing reputation.
Fully Licensed and Air Conditioned

Special Offer - Meal Deal

Sunday to Thursday

(Excludes Bank Holidays and School Holidays)

Starter/Main Course/Rice or Naan/Tea or Coffee

£8.95 per person

Opening Hours

Lunch 12 to 1.30pm (Closed Friday lunch)

Dinner 5 to 11.30pm - 7 day's a week

11 Queen Street, Bude, EX23 8AY

01288 356 591 01288 359 508

Menu's on our Web Site - www.bayleaf-bude.co.uk



PVCu WINDOWS & DOORS CONSERVATORIES

KITCHENS & BATHROOMS

GLASS BALUSTRADES BUILDING SUPPLIES

Kings Hill Industrial Estate, Bude EX23 8QN

www.kjbromell.co.uk 01288 357020

- we manufacture, supply and fit double glazed PVCu windows, doors and custom designed conservatories
- we design and supply beautiful, functional kitchens, bathrooms and wet rooms to help you create your ideal home
- open up the view from your patio or balcony with glass balustrading supplied and fitted by our skilled craftsmen
- at our site in Bude we have a large building supplies shop open to both trade and the public.

Come and see what we have to offer!

SHAPING THE RURAL LANDSCAPE

The rural landscape is changing at a faster pace than ever before. We now see Eric Pickles, in charge of local government and planning, doing all he can to remove barriers to enable landowners and developers to build. Anyone bogged down in the swamp of bureaucracy will feel such an attitude is to be applauded. On the down side, however, we see approval for land development which is irreversible and which future generations may curse ours for allowing.

I have recently come back from a family holiday in Brittany. This is a peninsula not too dissimilar from our own, and with a similar population. Travelling the length and breadth of the area, I was struck by just how very few wind turbines were visible. I saw town centres preserved and enhanced. The retail and commercial developments were just as ugly as ours, but they were far better contained in the least attractive outer suburbs. Each community appeared to thrive.

On a trip from Bude to Barnstaple with my wife the other weekend, we were amazed at the number of wind turbines visible at any one time, particularly from higher ground. Previously outstanding vistas such as the view across Bideford Bay towards Braunton are now permanently blighted by the omnipresence of these giant structures. Yet I fear these are but the tip of the iceberg. With planning applications in for some mega-sized wind farms, all likely to get the go-ahead, there will soon be no part of the rural landscape without these colossi. I expect there will come a point where they are no longer visible because they become such a part of everyday life that we see them but don't see them. An earlier generation will no doubt have felt much the same way when electricity pylons were built the length and breadth of the countryside. Before that there would have been the march of the telegraph poles.

The increase in supermarkets in the local economy has wreaked havoc on the high street. But it is difficult to complain. There will be few amongst us who have not bowed to the beckoning call of Tesco, Sainsbury's and Asda. It is difficult to stand on principle when your car can be parked free, and you can pick up all you need for the week in one hit. Yet does Holsworthy really need another supermarket in the shape of Tesco? Does Lanson really need a Morrisons? Does Bude really need a Tesco - all towns with thriving, existing supermarkets? With the added infrastructure these new developments bring, with the promise of many new jobs, it is a brave council that says no.

Mary Portas accepted the unenviable invitation to try to rescue the high street struggling to compete with such behemoths. She had many invaluable insights into the way ahead. It does not all have to be a big line of charity shops, and betting shops, and fast food outlets. I was reading the other day how Frome has bitten the bullet and decided to really go for high street regeneration. Craft workers, specialist shops, and a high street filled with really interesting commercial enterprises have really clicked. It is the result of a committee of disenchanted locals taking their concerns from the pub to the council, getting financial backing from the council, and then putting good ideas into practice. The result has been so successful that outsiders, liking what they see, are hoping to move into the area. The prospects look good.

When I first moved to this area in the late '70s, each high street was a thriving hub. What interested me most, however, was that there were still many private houses dotted in between the shops and businesses. They were real communities. Now Eric Pickles is looking to free up some of these unused, boarded-up shops. His idea is that they can be turned into new residential accommodation. If it works, and if the example of Frome can become a paradigm for other towns, then there will still be hope. Our town centres will not die, but hopefully will be rejuvenated. We owe it to future generations to make this happen.

John Busby, Busbys Solicitors, Bude & Holsworthy

MILTON DAMEREL PARISH HALL NEWS

Charity No. 281123

A Committee Meeting was held at the Parish Hall on Monday 13th August 2013. Future Events were organised.

As mention in the last Newsletter, the Parish Hall received a cheque from Waitrose for £290. See photo. The £1000 monthly donation was split between us, Holsworthy Brownies and Bude Town Band.

We have received charity ticket, from 'DELTA FORCE PAINTBALL' for up to 10 people. Value £59.99. If anyone is interested in this activity and would like the ticket, for a donation to the Parish Hall, please contact Lesley, 261 294.

Our Next meeting is our AGM on 9th September 2013, 7.30. All welcome.



EVENTS REPORT.

COFFEE MORNING. Thursday 13th June 2013. Profit £97.50. An enjoyable social. Thank you to all who came.

WHIST DRIVE. Saturday 15th June 2013. Profit £47.83. Enjoyable evening.

BEETLE DRIVE. Saturday 22nd June 2013. Profit £68. Another fun evening for all the family.

WHIST DRIVE. Saturday 20th July 2013. Profit £46.60.

WALK. MOOR VIEW FARM. Thursday 1st August 2013. Profit £152. A lovely evening, well attended. A pleasant leisurely walk. Thanks to John and Christine.

FUTURE EVENTS

All Proceeds for the Parish Hall unless otherwise stated.

FUN SKITTLES. Saturday 7th September 2013. 7.00pm for 7.30pm.(wrong time in last newsletter) £2.00 Adults, £1 Children, 11 and under. Refreshments available. BYO Wine or Beer.

WHIST DRIVE. Saturday 21st September 2013. 7.30 for 8.00pm. £2 per person.

WHIST DRIVE. Saturday 19th October 2013. 7.30 for 8.00pm. £2.00 per person

SNOWMAN DRIVE Friday 8th November 2013. 7.30. (As Beetle Drive) Family Fun, table game, suit all ages. £2 Adult £1 Child, 11 and under.

WHIST DRIVE. Saturday 16th November 2013. 7.30 for 8.00pm. £2.00 per person.

WINE & WISDOM. Saturday 30th November 2013. 7.30 for 8.00pm. **PLEASE BOOK** £5 per person. Teams of 6. Couples and singles welcome, can make up tables on arrival.

SOCIAL PUDDING EVENING. Saturday 5th October 2013. 7.30 £4.00. Come along to the Parish Hall for a Social chit chat and have your Pudding. Assorted Puddings, Cheese and Biscuits, Tea and Coffee. BYO Wine or Beer if desired. **PLEASE BOOK**

HALL BOOKINGS & Treasurer:- Mrs Lesley Self 01409 261 294 (If not available any of the following numbers).

Chairperson:- Mrs Mary Carter 261 248. Secretary:- Mrs Kate Moyse 261 151.

Regular Events at the Parish Hall.

Whist Drives The 3rd Saturday of each month

Milton Damerel and District Over 60 Club. 1st Tuesday of each month, 2.30pm. New Members Welcomed. A social afternoon. Enquiries Mrs Mrs Joyce Daly 259 115

Line dancing. Every Tuesday, 7pm to 8.30pm. £2. Small group, more members welcomed. Enquiries (please ring, if new, as an evening may be cancelled) Lesley Self, 261 294 or Mary Carter, 261 248.

Milton Damerel Gardening Club. 1st Wednesday of each month (February to June and October to December). 7.30pm to 9.00pm. Enquiries Mr Bill Wrighton 261 738. Email: billwrighton@hotmail.com

Milton Damerel Parish Council Meetings. Usually 3rd Wednesday of each month. 7.30pm. Enquiries, Parish Clerk.

Skittles

Milton Damerel Men, Milton Damerel Ladies, also Thornbury Men Skittles Teams, play for the Holsworthy Skittles League, at the Parish Hall, during the Skittle Season.

LINE DANCING
At Milton Damerel Parish Hall
Tuesdays 7.00pm to 8.30pm £2.00 per session
Tel: Lesley 261294 or Mary 261248

MILTON DAMEREL & DISTRICT OVER 60s CLUB

Summer trips programme for 2013 is nearing completion with just the trip for September to go::

17th September Dunster & Minehead

The coach trips have been well booked, but unfortunately due to unforeseen circumstances, there have been some vacant seats, which does impact on the overall financial viability of the summer programme. We are pleased that Hills Coaches have been able to take on the programme following Guscott's withdrawal of coaches.

Club meets on 1st Tuesday on the month at 2.30pm in the Parish Hall – new members very welcome to come along.

Enquiries to: Mr Les Yelland – Chairman
 Mrs J Daly – Secretary
 Mrs June Vanstone - Treasurer

Buttermoor Farm Bed and Breakfast

Wheelchair friendly accommodation.



www.buttermoorfarm.co.uk

info@buttermoorfarm.co.uk

Janey Kirby
 Telephone 01409 261314
 Mobile 07773108494







Local Computer Support

Sales & Services in

Milton Damerel

REMEDY IT LTD

Home or Business

Sales ♦ Support ♦ Training ♦ Upgrades ♦ Repairs
 ADSL ♦ Internet Problems ♦ Virus / Spyware
 Removal ♦ Websites

Computers, Laptops, Printers, Hardware, Software

Call Terry on 01409 261775
07983 606 225
www.remedy-it.co.uk terry@remedy-it.co.uk
Est 2001 Full eCRB Fully insured

The Pig on the Hill, Westward Ho, Devon, EX39 5AH
Telephone 01237 459222

Under new management, refurbished and reopened in May .

I haven't tried the newly refurbished pub but the website looks interesting, and the food sounds very good, and prices don't look to expensive.

They say :-

"We want to make food that tastes so good you'll want to come back again and again! At The Pig, you will find good wholesome pub food with elements of fine dining. Having worked with some of the finest culinary talents, from Marcus Waring to Gordon Ramsay, our chefs create gastro food with real personality.

When it comes to drinks we like to cater for all tastes. You'll find a well stocked bar, carrying local brews, fine wines and special spirits, as well as the usual favourites. Our non-alcoholic selection is just as good, with fine juices, good coffee and a selection of teas."

So give it a try, sounds good to me.



Police Co-ordinators
 PC 4936 – Andy Moakes } Holsworthy Pol. Station
 PCSO 30099 - Raquel Rowe } Tel: 101
 PCSO 30103 - Beverley Bray }

Local Co-ordinators
 Strawberry Bank: Roger Copp - Tel. 261681
 Gratton: Edgar Pett - Tel. 261277
 Whitebear & Fore Street Edgar Pett - Tel. 261277
 Venn Green: Mike Jackson - Tel. 261196
 Holsworthy Beacon: Jackie - e/m – jacdee1999@yahoo.co.uk

Report from June NHW Meeting at Weare Giffard

Our June meeting was held at Weare Giffard as part of the new regime where the NHW meetings go out to different venues across Torridge in order to make the meetings accessible to a wider audience. The event was very well attended by local members, many who had not been to a meeting before and the informal aspect encouraged audience support and participation. The main topic of the evening was a talk by PCSO Melissa Baker from Torrington on the subject of **Preventing Crime in the Rural Community**. She was supported by Bideford Rural PCSO John McGovern.

The talk started with a few crime statistics being given and one which stands out in particular is that in 35% of burglaries of sheds and outbuildings, access was gained through open unsecured doors and windows. It would seem that our messages urging people to lock and secure their premises is still not being heeded. Sheds and outbuildings should be fitted with a good quality mortise or padlock – **and used**. As most burglars are looking for easy targets, gravel paths and driveways were recommended as deterrents as it is almost impossible to cross them quietly. Prickly plants in borders near to walls and fences are also a good deterrent, as are prickly strips which can be fixed to the tops of walls and fences to stop people climbing over. These are available from most hardware shops. When away from home for holidays etc. it is suggested that action is taken to make the property look lived-in. Leave a vehicle on the drive. If you only have one car, which is being used, ask a friend or neighbour to leave their car on the drive. Set a light to come on in the evenings using a time switch and don't forget to cancel any milk and newspaper deliveries. If you have a glass front door, consider asking a neighbour to call in and move any post as several days mail is confirmation to burglars that nobody is home.

By taking a few simple precautions we can make life much more difficult for burglars and thieves who will then hopefully go away to look elsewhere. If you have concerns about any aspect of your home or garden security our PCSOs will be happy to come along to your home to discuss and advise on your options. They have been trained to do this so please make use of their services. Contact them direct or arrange for an introduction by your co-ordinator. By working together we can drive down crime.

The Talk was followed by a Q & A session covering various of policing and NHW policy.


Melissa also explained the process of **Reporting Crime Incidents & Contacting the Police**. The communications hub at Exeter is set up to operate using postcodes rather than the National Grid reference system. Whenever a call is received that needs assistance, their postcode highlights the area on the map, that they are calling from. The system then throws up a list of properties which are covered by that postcode and the required property is "checked" and it is then immediately pinpointed on the screen. Each officer's comms. radio also carries a GPS tracker, which is activated as the set is switched on when coming on duty. Their locations are also shown on the screen and so the operator is able to dispatch the most appropriate officers to the incident. It would appear that the only time that grid references are of use is if the police helicopter is involved, as this works using these rather than postcodes. The Fire and Ambulance Services don't use the exact same system. The Ambulance Service mainly uses postcodes but can also utilise road names and property names. The Fire Service is not geared directly to postcodes but uses an amalgam of grid references, road numbers, place names and features. They are however able to locate postcodes within their referencing system to use as a back-up check.

Crime levels are reported, by area, on the police website and another useful site is www.ukcrimestats.com.

Alarm Service / Installation Scam

We have been made aware of an Alarm Service/Installation scam operating under the name of "Helpline" and which is currently active in the Okehampton area. Helpline personnel initially make contact with usually elderly or vulnerable people by phone to make an appointment to visit. Having made an appointment, the helpline rep. will attempt to sell an alarm system and keysafe installation at an exorbitant price and requesting a cash payment in advance. Be aware that you may never see or hear from these people again or, if you do, you could end up with a poorly installed system at a very high price. If you feel that you need an alarm system, then ensure that you use a reputable known company to carry out the work. It is best to try to avoid dealing with this type of selling and even if you do, then do not part with any money in advance of the work taking place.

The **Skydive** which Sgt. Pennie Channing and PCSO Emma Tomkies made from 15,000 feet in mid July took place in near perfect conditions and was completed successfully by both of them. At the time of writing sponsorship had raised £1315, which is for the North Devon Hospice. A big thank-you to everyone who supported them.



HOLDCROFT Lighting

Unit 4d & 4e Kings Hill Industrial Estate, Bude
01288 350627
www.holdcroftlighting.co.uk

HOLDCROFT SFW ELECTRICAL CONTRACTORS

NAPIT Member, Part P Registered, JIB Graded, FSB member

HOLDCROFT HEATING

Electric Heaters, Electric Radiators, Storage Heating, Water Heaters.

HOLDCROFT SECURITY

Security Lighting, Flood Lighting and Photo Cells.

HOLDCROFT ELECTRICAL WORK

Domestic, Commercial, Agricultural & Industrial Installation. Maintenance & Repairs undertaken from extra sockets/lights to new installation & re-wires.

HOLDCROFT ELECTRICAL TESTING

Periodic Tests, Electrical Safety Tests, Public Entertainment Tests, Emergency Lights, Landlords Inspections, Portable Appliance Testing.

At Holdcroft SFW Electrical we pride ourselves on our reliability and highest quality workmanship that is why we are registered with the National Association of Professional Inspectors and Testers (NAPIT) for portable appliance testing, installation tests and inspections, Part P work. We are also members of Trustmark, the scheme supported by the government, the building industry and consumer groups, this scheme helps you to find reliable and trustworthy trades people to make improvements and repairs to your homes.



Telephone: 01288 350104
 or mobile: 07721 360 940

Unit 4d & 4e Kings Hill Industrial Estate, Bude, Cornwall EX23 8QN

www.holdcroftsfw.co.uk



Come back to Electrical Heating!

The Future of Heating is Electric!



Why choose Electric Dynamic Storage Radiators from Holdcroft Electrical?

Efficient Electrical heating is 100% efficient and carbon neutral at the point of use. The heat is generated where you need it, not lost in the pipework.

Safe Electricity is a clean safe fuel, no dangerous gases or oils and no annual safety check or maintenance is required.

Lower ownership costs Electric heating systems have no moving parts and can be expected to last 15 years. They are easy to install with no unsightly pipework and minimal disruption and its easy to add to the system when budgets permit.

Green Dwindling gas and oil supplies will mean volatile prices. Electricity, increasingly generated by nuclear, wind, solar and other sustainable sources, is the fuel of the future.

HOLDCROFT SFW ELECTRICAL CONTRACTORS

Unit 4d & 4e Kings Hill Industrial Estate,
 Bude, Cornwall EX23 8QN

Call 01288 350104
 for a Free, No-Obligation
 quote today!

Picnic Word Search

N	S	A	U	S	A	G	E	R	O	L	L	S	Q	G	C	V
O	R	H	H	J	Q	F	H	M	Z	R	Y	S	F	M	N	M
P	H	W	T	S	D	W	C	U	C	U	M	B	E	R	M	A
F	T	W	O	K	A	C	A	K	E	R	W	S	S	A	J	I
A	Y	X	L	H	M	N	K	W	V	P	E	R	Y	V	E	W
N	L	T	C	T	M	K	D	P	W	O	S	O	H	R	I	S
D	D	K	E	A	C	Z	S	W	T	S	N	L	S	M	P	T
O	B	D	L	P	F	P	J	A	I	N	H	N	A	L	K	R
S	A	J	B	N	W	M	M	C	A	C	Y	H	U	E	R	A
B	P	Y	A	J	F	O	B	I	W	I	H	L	Q	T	O	T
X	P	U	T	L	T	W	S	N	D	B	C	E	S	T	P	M
H	L	O	Q	N	O	E	S	P	S	I	R	C	S	U	F	A
N	E	D	A	N	O	M	E	L	M	P	C	K	J	C	A	J
S	P	A	C	P	I	C	N	I	C	B	A	S	K	E	T	E
I	I	I	V	U	W	C	H	T	U	K	M	D	Y	T	J	T
Q	E	S	N	O	A	X	T	O	F	A	Y	J	J	N	Z	K
I	S	S	L	L	O	R	D	A	E	R	B	N	E	H	T	W

applepies

bread rolls

cake

crisps

cucumber

jam tarts

lemonade

lettuce

mayonnaise

picnic basket

porkpie

sandwiches

sausage rolls

squash

tablecloth

tomatoes

The newsletters group members are:

Nicky Martin	n.martin337@btinternet.com		Regular contributors and features
David Taylor	dave@grawley.co.uk	261577	Treasurer and Advertising
Rose Haynes	rose@grawley.co.uk	261577	Regular contributors and features
Grace Millman	grace.millman@btinternet.com	261251	Regular contributors and features
Margaret Stannard	maggiestannard@yahoo.co.uk	261486	Regular contributors and features
Terry Fairbrother	terry@remedy-it.co.uk	261775	Newsletter Compiler
Lesley Self	petles@talktalk.net	261294	Regular contributors and features

Letters, comments, news and articles, etc., can be emailed to mdnews@miltondamerel.com or to any of us individually. Our correspondence address is Chapel View, Milton Damerel, EX22 7PB. We want to hear from you with letters for inclusion, topical issues, features you like and also changes to improve the content and style for future editions. We also need every-one to let us know special birthdays, births, anniversaries, and other congratulations. Also tributes to parish residents.

Advertisements

Conditions of acceptance. Orders for insertion of advertisements in this newsletter are subject to the approval of the members who may refuse or alter any copy. The newsletter and the members:- a) accept no liability for any loss or damage caused by an error or inaccuracy in the printing of any advertisement. b) Shall not be liable for any loss caused by the failure of the advertisement to appear on any particular day, in any specified position or page or by its failure to appear at all, and they reserve the right to refuse to continue its publication regardless of terms and conditions of any order or contract. Trades Descriptions Act 1968—All traders are reminded of the needs to ensure that goods offered for sale by advertisements comply with all relevant provisions of the above mentioned act.

To advertise in this newsletter contact David on 01409 261577 for more details.

The deadline for submissions of articles and advertisements for the next newsletter is 15th November 2013

WHAT'S ONa selection of local events in Holsworthy and North Devon

Holsworthy

WHAT?	WHEN?	WHERE?
The Right Honorable Gentleman	12 th September – 21 st September	H.A.T.S. Tel:01409 253826 www.holsworthytheatre.co.uk
Peter Gill presents ‘An Evening of the Wit and Songs of Noel Coward’	Friday, 27 th September @ 7.30pm	
	Films, Live Events – Theatre, Music, Visual Arts, Regular & Special Workshops for Children	The Plough, Torrington Box Office: 01805 624624 www.theploughartscentre.org.uk
Film: Much Ado About Nothing	Sunday 15 th September @ 3pm & 8pm Tuesday, 17 th September @ 8pm	
Film: Twelfth Night	Sunday, 13 th October @ 3pm	
Seabright Productions presents The Magical Playroom (Cerrie Burwell from Cbeebies)	Friday, 1 st November @ 2pm	
Traffic of the Stage Touring presents Much Ado About Nothing	Tuesday, 5 th November @ 8pm	
North Devon’s Biosphere Reserve Anniversary Lectures: <ul style="list-style-type: none">• The Future of the Landscape• Marine Futures• Environmental Security	All at 8.15pm Wednesday, 6 th November Wednesday, 13 th November Wednesday, 20 th November	
Afternoon Tea with Michael Portillo: Life: A Game of Two Halves	Saturday, 9 th November @ 4pm	
Honor Blackman as Herself	Sunday, 17 th November @ 7.30pm	
Workshops: Hand Patchwork & Quilting, Willow Basket, Felt Hats & Bags, Felt Scarves, Hand Applique Wall Hanging, Willow Sculpture – throughout		
	Drama, classical music, opera, children’s shows, popular music (including rock, jazz, folk and roots), contemporary dance, ballet, amateur shows, visual arts	
Bournemouth Symphony Orchestra	Wednesday, 19 th Sept @ 7.30pm	
Grimethorpe Colliery Band	Saturday, 21 st Sept @7.30pm	
Goodnight Mister Tom performed by North Devon All Starz	Thursday 26 th – Saturday, 28 th Sept	
Moscow Ballet – La Classique The Sleeping Beauty	Friday, 18 th October @ 6.45pm	
Barnstaple Musical, Comedy & Dramatic Society Miracle on 34 th Street	Wednesday, 13 th November – Saturday, 16 th November @ 7pm Also 2pm on Saturday.	
Royal Marines Band Concert with The Military Wives Choir	Sunday, 24 th November	

June 2013

S	M	T	W	Th	F	Sa
						1
2	3	4	5	6	7	8
9	10	11	12	13	14	15
16	17	18	19	20	21	22
23	24	25	26	27	28	29
30						

Complete all outdoor planting of tender bedding and vegetables .

Ridge up late potato rows.

Sow more rows of vegetables to maintain a regular supply including peas, spinach, cabbage etc. And salad crops.

Lawns will need regular mowing unless we have a drought.

Treat lawns to kill weeds and moss following packet instructions carefully.

Get the B.B.Q. out and ready to light.

July 2013

S	M	T	W	Th	F	Sa
	1	2	3	4	5	6
7	8	9	10	11	12	13
14	15	16	17	18	19	20
21	22	23	24	25	26	27
28	29	30	31			

Stay on top of weeding or they will take over.

Enjoy the fruits of your labours removing ripened vegetables before they get old and inedible.

Take the time to stand or sit back and admire your handiwork.

August 2013

S	M	T	W	Th	F	Sa
				1	2	3
4	5	6	7	8	9	10
11	12	13	14	15	16	17
18	19	20	21	22	23	24
25	26	27	28	29	30	31

Enjoy the wonderful weather !!!!