



*Happy Christmas
and all Good Wishes for 2015*



Never too young to 'digest' the Newsletter

Inside this issue:

Milton Damerel Parish Council	2
Congratulations	3
Church & Chapel News	4
Youth / Junior News	8
Over 60s	9
Parish Plan Update	13
Walking Footpaths	14
Milton Damerel Gardening Society	17
Parish Hall News	24

Milton Damerel Parish Council

Parish Clerk: Lorraine Buttery

Tel: 01409 282956

3 Sunset Heights ,Shebbear

E-mail: miltondamerelpc@hotmail.co.uk

Devon, EX21 5BN

Councillors:

Stephen Moyse (Chairperson)	01409 261151	Richard Piper (Vice Chairperson)	01409 261114
Rose Haynes	01409 261577	Jim Richardson	07866406977
John Webb	01409 261301	Grace Millman	01409 261251
Gareth Piper			

Meetings are usually held on the third Wednesday of each month. The agenda for all meetings are displayed on the notice boards and available on the Milton Damerel Website, no later than the Thursday before the meeting . The minutes are posted to the website as soon as they have been approved at the following Parish Council Meeting. Members of the public and press are always welcome and time is set aside for comments but they may not take part in discussions at any other time.

Annual Grants: Requests for annual grants were considered at the Parish Council meeting held on the 19th November. Successful applicants will be notified by post in due course.

Councillor Robin Julian has attended several meetings throughout the year and continues to work hard for the constituents in his area. There has been some considerable talk regarding financial cut backs throughout all departments.

In particular Devon's roads are suffering. Complaints regarding pot holes and poor surfaces are reported regularly by the Parish clerk and Councillors but if you have any concerns regarding road conditions you can email csc.roads@devon.gov.uk or report directly on to Devon County Council website. There are often surveys available for residents to complete so look out for the 'Tough Choices' on Devon County Council website which sets out what is being considered for 'cut backs', you could make all the difference.

Planning matters;

Applications for 'Change of Use' of agricultural buildings and the conversion of barns for residential use have been received for the Parish Council's comments, the Parish Council has raised no objections and on the whole have supported these applications, but unless they meet strict criteria set out by Legislation, Torridge Planning Department will turn down the application. A recent application for a large wind turbine at Holsworthy Beacon has been turned down but a variation of the original application has been filed for a smaller wind turbine which is now under consideration.

Details for all planning applications are available on Torridge District Council website; applications to be considered by the Parish Council are stated on the Agenda for Parish Council Meetings. If residents have any objections or concerns regarding an application they can convey them in writing either by post or email to Torridge District Council planning department, you can also inform any Councillor or the Parish clerk, as there is now a strict 21 day consultation period it is imperative that you get your comments to the relevant department as soon as possible.

The step Back in Time Fund for young people still has a balance of £183.02. Grants can be made from this fund to help young people of the Parish undertake special activities, such as volunteering at an event at home or overseas. Applications in writing can be sent at any time to the Parish Council via the Parish Clerk, outlining the project for which the grant is requested.

Town and Parish Fund:

Don't forget there is a Projector, laptop and projector screen available for local organisations to use in presentations for information or raising funds or any other suitable reason. The equipment can be used at the Village Hall or other premises provided that the presentations are for the local community. For example if there was a family celebration and the organiser hires the Village Hall the equipment would be available as part of the hall facilities, but an individual could not use it in their own home, nor can it be used by other Parishes (except Sutcombe who are joint owners). If in doubt, or for any further information, please do not hesitate to contact any Councillor or myself.

Finally as 2013 draws to a close the Chairman, Councillors and Parish Clerk of Milton Damerel Parish Council wish all Parishioners a Happy Christmas and Peaceful New Year

Freedom of information: Requests for information under the Freedom of Information Act should be sent to the Parish Clerk. Some Information can be made available by email free of charge, paper copies will be charged at 10p per A4 side. Copies of the recent Parish Council meeting agenda and minutes are now available on www.miltondamerel.com

Lorraine Buttery Parish Clerk 20th November 2014



CONGRATULATIONS!

Roy & Isabel Fairbrother of Albatross, Venn Green who celebrated their Golden Wedding Anniversary on 17th October
Terry Fairbrother of Rosemead, who celebrates his 50th birthday on 17th January
Janet Carter of Derworthy Farm, who was 50 on 5th November
Margaret Fishleigh, of Gratton, who will be 70 on 24th December



GOOD-BYE & WELCOME

Good-bye to:

Raymond & Brenda Jones, who have recently moved from Tall Trees, Venn Green
Matt & Samantha Garrett, Henry & Darcy, who have moved from Higher Walland
Nathan & Denise Bradley who have moved from Woodland View, Whitebear Cross

Welcome to:

David & Pat Palmer, who have moved into Tall Trees, Venn Green
Gary & Wendy Copp, Stacey & Danielle, who have moved into Higher Venn
Matthew & Teresa Philpott and family, who have moved into Woodland Villa



OUR SYMPATHIES

For those who been bereaved recently including:

Paul Casserly and family, of The Heathers, Strawberry Bank,
 on the recent sad loss of Jenny, wife and mother.



**Local Computer Support
 Sales & Services in
 Milton Damerel**

REMEDY IT LTD

Home or Business



Sales ♦ Support ♦ Training ♦ Upgrades ♦ Repairs
 ADSL ♦ Internet Problems ♦ Virus / Spyware
 Removal ♦ Websites

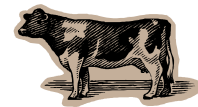
*Computers, Laptops, Printers, Hardware,
 Software*

Call Terry on 01409 261775

07983 606 225

www.remedy-it.co.uk terry@remedy-it.co.uk

Est 2001 Full eCRB Fully insured



A1 Cattle Services Ltd
Foot Trimming

Contact: Trevor Chambers
On

07737838096

Or 01409 261787

**(over 22 years experience in the agricultural
 industry)**

2, Fore Street, Milton Damerel

Chapel News – December 2014

A Message from PJ – our Minister

REFLECTION

COME THOU LONG

EXPECTED JESUS



She will bear a son, and you are to name him Jesus, for he will save his people from their sins. (Matthew 1:21)

This is quite an enjoyable hymn that says to us what we should all be feeling at this time of year. “Hope of all the earth thou art...Joy of every longing heart.” The babe...the Saviour that is to set us free has come and ended our long wait. The celebrations can begin for we now see the promise of God fulfilled.

The gospel of Matthew speaks about the coming Messiah. I can only liken this to a couple who are expecting their first child and how much preparation future parents, grand-parents, and friends put into the coming birth of a child. We begin shopping for cribs and clothes months in advance. The parents attend child birthing courses in preparation for the big day, grandmothers begin knitting blankets with matching booties while granddads are sent up into the attic to bring down and dust off the family heirlooms that are to be passed on to the new arrival. We do all these things in preparation.

Well, the question is how are we preparing our lives for the expected Saviour? What gifts are we preparing for our king? Are we preparing by shopping until the wee hours of the night filling our life with material things? Hoping he will like the latest X-BOX or the hottest tablet computer. Or have you invited someone whom you know will be on their own this holiday season to share Christmas lunch with you and your family? Remembering that we are called to bless others out of our abundance.

Soon we will stand with the shepherds and be amazed with the animals to see the birth of a baby “Born a child a ndyet a king...” who will one day save us from our sins. I do hope you all have a wonderful and blessed Christmas and a very prosperous and Happy New Year!

God’s Peace and Blessing be upon you all!!!

Rev. P. J. Jackson

SUMMER CONCERT – This concert with the Stowford Meadow Singers, held on the August Bank Holiday week-end was a really lovely evening. The Chairman, Roy Johns of Shebbear, interspersed the musical items with some poems, humorous stories, and Bible reading. The evening was well attended and enjoyed by everyone. Thank you to Lorna Dawe for organising it.

AFTERNOON TEA & CAKES - As usual great cakes and good company for the last of the year of our get-together afternoons. There were also a few bargains to be had off the stalls. £143.23 was raised; £100 of this was given to The Long House Appeal (the Long House will be located within Holsworthy Medical Centre grounds) and the balance of £43.23 given to the local Holiday Club.

HARVEST FESTIVAL WEEK-END – We are very grateful for your tremendous support throughout the Harvest week-end. All events had good attendances and a very good sum totalling £607.87 was raised, which will be allocated towards our property expenses. Prior to the Harvest week-end, during September, food was collected for the Freedom Centre at Barnstaple and a letter of much appreciation was received.

REMEMBRANCE SUNDAY – Our preacher was Mr John Dennis of Torrington. We held the 2 minutes silence and the Poppy Wreath was laid at the War Memorial Wall plaque by Mrs Phoebe Overy. We were delighted to welcome Phoebe back with us, she now lives at Halwill. Phoebe’s husband, Geoff, had performed the Act of Remembrance with us for many years. Following the service we went outside and gathered near the grave of Mr Marwood Oke. He had served in the 1st World War and had been badly wounded at the Battle of the Somme. Some of his time had been spent living at Derworthy Cottages. He survived the war despite his serious injuries and lived into his 80s. (There are a few others included on the Roll of Honour buried in the graveyard, there may be more but we are unable to identify as not all graves have headstones.) Prayers were said at the grave side and a wreath laid by Leah Hannaford.

BIBLE STUDY – A group meet on Monday evenings at 7.30pm in the Schoolroom for Bible Study. We are an ecumenical group, drawn from Milton and neighbouring parishes, self-lead our studies and select books of the Bible for study. We have just completed a study about Getting the Most Out of Worship. We would be delighted to welcome anyone wishing to join us!

CHRISTMAS 2015 – Our planned Christmas events all fall in the Christmas week.....we start with a **Traditional Carol Service** in the chapel on **Sunday, 21st December from 11am to 12pm** with Courtney Drew from Holsworthy leading the service. The collection, as usual, will be donated to Action for Children, our Methodist Church children's charity. Mince pies and coffee following the service.

Later on the same day, in the Schoolroom, there will be a **Family Friendly Crib Service at 4pm** with Revd PJ Jackson and Father Christopher Penn. Carols, Crafts, Food and Fun – plus a surprise or two. No charge.

On the following Sunday, **28th December at 11am** in the Schoolroom there will be **Family Carols**. Come and choose your own favorite carols. This will be locally arranged, no preacher. Favorite readings, poems, etc. Coffee and biscuits to follow.

FAMILY SERVICES –. The last Sunday each month is Family Service for everyone (all ages!). We are delighted to welcome anyone able to come along.

28th December
See above

25th January
Revd Martin Goord

22nd February
Locally arranged -
to be confirmed

CHAPEL FLOWER PLAN FOR THE MONTHS OF DECEMBER 2014 TO FEBRUARY 2015

7 th & 14 th December	Mrs Grace Millman
21 st & 28 th December	Mrs Phyllis Piper
4 th & 11 th January	Mrs Valerie Harris
18 th & 25 th January	Mrs Margaret Fishleigh
1 st & 8 th February	Mrs Anne Poole
15 th & 22 nd February	Mrs Lilian Luxton

CHURCH COUNCIL – At the October meeting, the annual returns and reports about finances were received and found satisfactory! Recent occasions of Farewell Service for Revds Graham and Meg Slingo and Harvest Festival were noted for the wonderful attendances and opportunities for meeting with many friends, old and new. The upgrade of the electrical supply, including a new mains transformer, has been completed. The fencing off of the area outside the chapel cottage is successfully restricting egress by vehicles and improved safety for the caretakers.

CONTACTS – For further information or help please contact: Our Minister: Revd P Jackson (PJ) (Tel: 281262), Our Steward: Lilian Luxton (Tel: 261355), Our Church Council Secretary: Sheila Daniel (Tel: 261466), Our Caretakers: Steve & Sarah Weal (Tel: 261694)

*Our Minister and Congregation wish everyone
a blessed and peaceful Christmas
and pray this will continue for 2015*



Holy Trinity News

From Fr Christopher; If you know of anyone who needs me to visit, day or night at home, hospital or hospice please don't hesitate to call – I am more than happy to visit. Phone me at any hour, day or night, on 07941735318.

Mission Community News. - Welcome to Richard Freeman the new incumbent at Bradworthy.

The Bishop of Crediton and the Acting Archdeacon of Barnstaple, with the unanimous support of the parish representatives, are pleased to announce that subject to the completion of the statutory formalities, the Rev'd Richard Freeman has been appointed Incumbent in the Bradworthy Benefice of Abbots Bickington, Bradworthy, Bulkworthy, Putford and Sutcombe. Richard is currently Vicar of Shoreham, Kent, and Chaplain to St Michael's Prep School. He will be licensed by the Bishop of Exeter on Tuesday 27th January at 7.30pm in Bradworthy Church.

From the Church Wardens: The 1WW displays to commemorate those from the Parish who served in the 1 WW took place in mid August, there are some photographs on the Parish web site. Over the 3 days the display was held almost 50 people came to visit with most being on the Saturday and Sunday. The compilation of records is still ongoing and Holsworthy Museum will be working on this until the final 100 years commemorations in 2018. Please contact them if you have further records.

Devon Church's Ride and Stride is an opportunity to visit many of the historic churches around the county and this was the first year Holy Trinity took part in the event. The church was open for the day but only a few people came from outside the Parish to visit.

Christmas Services at Holy Trinity

Morning Prayer– **14th Dec 14 11.30 AM**

Carol Service – Tuesday 16th Dec 7.30PM

A Service of Nine Lessons and Carols with Bradworthy Choir.

Mince pies Mulled Wine or refreshments to follow.

Christmas Day Eucharist Service 11.30 AM

Forthcoming Services:

December services as above but the usual 4th Sunday Service will not take place.

28th Dec 14 No service

11th Jan 2015 at 11.30 - Morning Prayer

Church Gardening

Winter dates for Church Gardening are:

Friday 12th December between 1 PM and dusk - Decorating for Christmas and tidy of grounds.

Friday 23rd January between 1PM and dusk.

Friday 20th February between 1PM and dusk.

St. James Church, Abbots Bickington

CAROL SERVICE: Thursday 18th December 2014 at 7pm

St Peter's Church, Thornbury

World War I Flowers – thank you very much to Carina and Jane who created some wonderful floral tributes for the anniversary of World War I, a lot of thought and work went into creating these displays, a fitting way to remember those who gave so much for us all.

Bag Collection – thank you to everyone who continues to support our bag collections – we managed another 200 kgs at the end of October, which will result in a donation of £80 for St Peters. Please start collecting again - we will arrange another collection in the Spring. We can take clothes, coats, bags, shoes, belts but NO bric a brac or bedding now.

Christmas Carol Service – will be held in St Peters Church on **Sunday 21st December at 6.30 pm**. Please come along and join us for a lovely evening and warming refreshments afterwards.

Christmas Day Holy Communion Service will be held at St Peters, Thornbury on **Thursday 25th December at 11 am**. Everyone welcome

SATURDAY CHURCH – Nativity Play open to all small and tall, no one too young or too old! **Saturday 13th December at 10 am In The Stable At Bradford Village Hall**. No lines to learn, no costumes to make, please come and join us.

JANUARY SATURDAY CHURCH will take place on **Saturday 10th January, from 10 am** and we will be celebrating Plough Sunday (on Saturday) – everyone welcome, informal worship for all ages, with refreshments.

MILTON DAMEREL METHODIST CHURCH

TRADITIONAL CAROL SERVICE

With Mr Courtney Drew
In the Chapel

Sunday, 21st December at 11am

FAMILY FRIENDLY CRIB SERVICE

with Fr Christopher & Revd PJ
in the Schoolroom

Sunday, 21st December @ 4pm

Followed by Tea

CHRISTMAS FAMILY SERVICE

Locally arranged

Sunday, 28th December @ 11am

Coffee/tea & biscuits

Everyone is very welcome

– please come along.

Holsworthy Beacon Methodist Church

COFFEE MORNING

Last Thursday of each month
(excluding December)

10am – 12noon Chapel Hall

CONCERT

The Valley Voices
from Liskeard

Sunday, 14th December @ 3pm

Buffet Tea to follow

CAROL SERVICE

Sunday, 21st December @ 11am

Followed by mince-pies & cream

Warm welcome to All!

HOLY TRINITY CHURCH MILTON DAMEREL

CAROL SERVICE

with Bradworthy Choir

Tuesday, 16th December @
7.30pm

Mince pies & mulled wine

CHRISTMAS DAY SERVICE

@ 11.30am

JUNIOR /YOUTH NEWS

Toddler Group

We celebrated our 1st Anniversary in early November with a cake and balloons. The children really enjoy meeting, as do the Mums & Grans, sometimes Dads and Grandads. We welcome other local children from small babies upwards. We meet Tuesday mornings from 10.30am to 12.30pm. Contact Sheila tel: 261466

Holiday Club

This was held during half term. We were delighted to have Lee back with us doing lovely nails for the girls. There was collage for the smaller ones. A Christmas Craft table and plenty of exciting goings on in the kitchen, the cooking is always a great hit. We had a very good attendance. Thanks to all who helped.

For the future we hope the Family Friendly Crib Service will appeal on Sunday, 21st December, this will be fairly informal, Messy Church style, food and some surprises. A Family Party will be held in the New Year.

We are very grateful to receive £43.23 as some of the money raised at the last Afternoon Tea & Cakes. Contact Sheila tel: 261466

An exciting new project at Holsworthy Community College

Holsworthy Christians Together, with the support of the Principal and Staff of the Community College, have embarked on a project to place a Trainee Chaplain to work in the College alongside students, helping with assemblies, the classroom, at lunchtimes and After School Clubs, and also with Youth Clubs in the Holsworthy area. This is a 3-year project estimated to cost £12,000 per annum, aiming to make a first appointment to start for the next academic year in September 2015, and is modelled on similar Connect 2 projects which have been operating in the Chulmleigh, Cridton and Okehampton Colleges. The Diocese of Exeter has granted £12,000 from its Million for Mission Fund, other commitments have secured a further £8,000, and the balance of funds to secure the project for 3 years is being sought. As young people attending Holsworthy Community College come from a wide area, the support of local churches and chapels is being requested. Further information can be obtained by contacting Rev Chris Hardwick, Rector at Pyworthy (tel: 253547) or any of the local clergy.

**Would your community
group benefit from a
presentation on Fire Safety
in the home.**



**To Book a FREE talk / presentation
Contact Sallie or Steve in the Community Champion Team
Bideford Fire Station, Old Town, Bideford, EX39 3BH
01237 423859**

NEIL DAVIES ASSOCIATES
CHARTERED ACCOUNTANTS
AND BUSINESS ADVISORS

The accountants you deserve for:

Preparing Annual Accounts
 Tax Planning and Tax Mitigation
 Wealth Creation and Preservation
 Business Planning and Growth

FREE initial consultation available at your business premises, at your home, or at our office. FIXED FEE quotes available on request.

Prompt, Professional and Friendly service
 Neil Davies F.C.A. and Graham Johns F.C.C.A.
 BSc (Hons)

Tel: 01288 350616, Mobile: 07972765312

Email: Neil@neildaviesassociates.co.uk

Web: www.neildaviesassociates.co.uk

Bude Business Centre, Kings Hill Ind. Est. Bude,
 Cornwall

ACM David Gubb BSc Hons
 ALL COAST MEDIA Langtree, Torrington

BESPOKE WEB DESIGN
 WEBSITE SUPPORT AND MANAGEMENT

BUSINESS AND HOME
 (WEBSITE AND COMPUTER SUPPORT / REPAIRS)

CUSTOM INVOICING SYSTEMS
 (FOR SECURE ONLINE INVOICES AND JOB QUOTES)

www.ALLCOASTMEDIA.co.uk
07812 772638 - 01805 601427

REFRESH YOUR OLD WEBSITE

**GET A NEW RESPONSIVE DESIGN...
 FOR MOBILE AND TABLET DEVICES**

BUSINESS CARDS + OTHER STATIONARY

MILTON DAMEREL & DISTRICT OVER 60s CLUB

Club normally meets on 1st Tuesday of the month at 2.30pm in the Parish Hall – new members very welcome to come along, There is no meeting in January, but the year re-commences with a Bring & Share Tea on Tuesday, 3rd February 2015.

The final outing of the year was in October when we had a shopping trip to Plymouth, with a stopover at Tavistock. The coach outings have been well supported this year.

The Annual Christmas Dinner is on Tuesday, 9th December at The Royal Hotel, Bideford.

Chair:	John Francis (Tel: 261117)	Vice-Chair:	Edwina Hale
Secretary:	Colin Boucher (Tel: 01288-359184)		
Treasurer:	June Vanstone (Tel: 261285)	Asst Treas:	Iris Fry

Enquiries to any of the above



Cromwell's Bistro



Woodford Bridge Country Club

Cromwell's Bistro, preparing freshly made food, sourced locally, prepared with passion.

An exceptionally friendly traditional bar and bistro located at Woodford Bridge country Club, you will be sure to receive a warm welcome from Leanne, Keith and the team.

Fresh food served daily from 12pm until 9pm with an extensive menu catering for all tastes as well as mouth watering desserts.

Cromwell's Sunday lunch is fast building its reputation for being one of the best in the area with its selection of local meats and abundance of fresh, local seasonal vegetables served every Sunday from 12pm - 9pm. Order before 5pm to enjoy a complimentary dessert all for just **£9.95 !**

Opening times

Breakfast 9am - 11am

Bar daily 12pm - 11pm

Restaurant Monday - Saturday 5pm - 9pm, Sunday 12pm - 9pm

Cromwell's also offer:

A great selection of wines, beers, spirits & local real ale.

A vibrant bar with excellent staff and a great atmosphere

Parties & gatherings can be accommodated in both our restaurant and private function area - book now for your Christmas parties! Christmas party are now menus available through December and January.

Here at Cromwell's freshness is everything when it comes to good cooking and many of our dishes are made to order from fresh ingredients, therefore you may have to wait a little longer for your meal. If you're pressed for time, simply call us in advance with your order and your meal will then be ready and waiting at the time you specify - it couldn't be easier. Just remember good things come to those who wait!

Booking is advisable - please call **01409 261481** ext: **876** in order to make your reservation.

There is much history surrounded with Woodford Bridge with no story more popular than the battle between Oliver Cromwell and the Royalists, as Cromwell's army defeated the Royalist and they retreated towards Holsworthy, Cromwell's squadron were in pursuit. The pursuit lasting through the night and into dawn took them over the river at Woodford Bridge, Cromwell, deciding that there was nothing to be gained by going any further and turned his squadron's round to retrace their steps, realising their weariness and need for rest he gave the order for them to bivouac in the meadows beside the river below the bridge. Cromwell realised the inn at Woodford Bridge would be a good place to establish his headquarters and took the inn itself for his headquarters with his senior officers. Cromwell based himself in what is now the resort manager's office sitting at a table beside the fire writing orders and dispatches in preparation for the further pursuit of the Royalist forces.

Linedancing at Milton Damerel Parish Hall.

We have been doing Linedancing at Milton Damerel Parish Hall for 15 years now. As with most groups, people come and people go. One wonders whether it worth carrying on when down to two or three, as we are now. We have been in this position before and as then, decided to carry on. We have had a couple of enquires, so Linedancing, will still be at 7.00 to 8.30 Tuesday Evening. £2 per person. If any one would like to come along, please telephone before, just in case for any reason an evening needed to be cancelled.

Linedancing is Fun and Good Exercise, so come along. Even after 15 years, we are nowhere near professional at it. Still make mistakes but we have an enjoyable evening.

Lesley Self. 01409 261 294

Mobile Library Timetable for 2015

Wednesdays from 15.45 to 16.30 at Lizzy's Larder

January	14 th	July	1 st & 29 th
February	11 th	August	26 th
March	11 th	September	23 rd
April	8 th	October	21 st
May	6 th	November	18 th
June	3 rd	December	16 th



Plumbing and Heating Engineer
Gasafe Registered

Nat Gas and L.P.G.

Boiler Upgrades, Installs and Servicing
Central Heating and Solar
Landlord/ Commercial Gas Safety Certificates

All plumbing works
from dripping taps to complete
bathroom installs/makeovers



TEL 01409 261442 MOB 07958901777
Contact e-mail george.aph@googlemail.com

DIAMOND
THE CUTTING EDGE IN

**PROFESSIONAL
CARPET, CURTAIN
& UPHOLSTERY CLEANING**
Domestic & Commercial

- Deep Hot Water Extraction Cleaning
 - Deodorising Treatments
 - Dust Mite Removal
 - Leather Cleaning
 - Stain Protection
 - Stain Removal
- Other treatment
also available

OUR PRICES ARE HARDER THAN A
DIAMOND TO BEAT

Call us now for a
FREE ESTIMATE

Call Mike on Holsworthy
01409 254816 or 07855 275088



Chimney Sweeping
Reasonable Rates
Ring David Seggons
01409 241702

Now offering a new service
Carpet cleaning, £2.50 per m/2

LATER THAN NORMAL GARDENING

That has been a really long mild Autumn, I'm writing this in the middle of November and we haven't had a frost yet and my bedding including the Dahlias still have some flowers making a show, also I have hardly lit any fires yet which is a real bonus.

As soon as there is any sign of a frost Dahlias and chrysanthemums need lifting and storing in cool, dry, frost free conditions, both should be cut back to 150mm to 225mm (6"-9"), Dahlias should be stood upside down so any water in the stems can come out and they can dry out before being boxed up and the tubers covered with bone dry peat until late March/April next year.

Chrysanths should be left to dry then also covered in dry peat, remove the tops off Begonias and Gladioli then store them dry and frost free until they can be replanted.

A FEW TASKS

If you haven't already done so then plant some Garlic cloves and Onion sets which will produce early crops for next year.

Now is a good time to spread compost heaps over the ground, as long as they have rotted down, then whenever the mood takes you it can be forked in to improve the soil conditions, this also enables frosts to penetrate and break up the clods leaving much more friable soil for planting into next Spring.

Many leaves have fallen but there are still plenty to come down, it is essential you do not allow the leaf debris to accumulate if they do they will kill anything under it especially grass and encourage algae to form which can be very slippery, on lawns I collect the leaves with my mower with the blades raised so I only cut a little of the grass, the combined chopped up leaves mixed with grass makes very good compost material.

Needless to say leaves will block drains so pay careful attention to clearing them before overflowing water leads to further problems.

Any remaining shading on glasshouses should be removed during appropriate weather condition, Coolglass has to be removed using a dry cloth in very dry conditions, on rooves I use a completely dry soft broom which will remove the product and gives me extra reach.

SHARPEN THOSE TOOLS

Herbaceous perennials should be cut off at ground level and all the debris removed to go on the compost heap, Fuchsias are an exception they are best left untouched until the spring, the old foliage gives the roots a bit of protection from frost.

As soon as most of the leaves have fallen indicating that the sap has stopped rising you can commence pruning be it cutting back shrubs or thinning and shaping trees especially fruit which do require annual treatment to keep them under control and producing good crops.

The earlier in the winter you prune the better, late winter/spring pruning encourages rapid soft growth which won't bear flower or fruit and can be a nuisance often requiring further pruning during the summer.

Do try to keep on top of mowing cutting the grass whenever weather conditions allow, it has been so mild the grass has been flying out of the ground and is unlikely to stop any time soon.

GRASCOTT FIREWOOD

Quality Seasoned Firewood

£85: Single Load

£160: Double Load

£230: Triple Load

Delivery charges may apply

Tel: 01409 281393

E-mail: grascottfarm@btinternet.com





**T 01409
253533**

9 Tamar Business Units
Holsworthy Industrial Estate
Holsworthy, Devon, EX22 6HL

www.renew-sw.co.uk

**QUALITY WINDOWS, DOORS,
CONSERVATORIES,
SOLAR PV & ROOFLINE**

Your Local Home Improvement Specialists



PARISH PLAN



For more information on the Parish Plan 2008 – please refer to the Plan delivered to every household. If you have recently moved into the Parish and have not seen a copy, please refer to the relevant section of the web-site: www.miltondamerel.com

Please contact any Parish Councillor or the Parish Clerk (contact details are shown on Page 2) about any issues in the Plan, with offers of volunteering to take forward some of the tasks in the action plans, or for an update on progress with actions not mentioned above.

Thanks to Edgar Pett for continuing as Parish Snow Warden - please contact him as required

Parish Emergency Plan

Review

The Parish Emergency Plan was drawn up in 2011. Since then, fortunately, the plan has not had to be put into action. It is, however, reviewed annually by the Emergency Response Team. The Team met on 17 October and carried out a test exercise using a scenario whereby Milton Damerel had been isolated by heavy and prolonged snowfall. (This has always been seen as the most likely situation to necessitate use of the Emergency Plan.) The session, which included our PCSO Raquel Rowe, was good value and produced some useful findings that will modify the Plan.

Most readers will, by now, have fast-forwarded to the next article: but we hope that some are still with us. That is the problem with emergency plans – they are dull and boring, and of no interest to the majority of people: complacency is the order of the day. But, there will be a time when residents of the Parish may be forced to take interest because they have no choice!!



Winter is coming

The amount of holly berries around this autumn predicts, according to folklore, a harsh winter. Bill Wrighton may wish to confirm that this is nonsense: Mother Nature is no better at predicting the weather than Michael Fish! Nevertheless, the exceptionally mild winter last year may not be repeated. Better to be prepared.....

One of the factors discussed at the meeting on 27 Oct was the availability of essential supplies. The last thing we want to do is encourage people to panic-buy, however, some sensible measures should be taken. All households should hold a stock of candles (and the means of lighting them), spare batteries for torches, some dried food (pasta etc), dried soups, a bottle of Single Malt and so on. This will ensure that, in extremis, no-one should suffer unduly. This was something that anyone living in the countryside used to do years ago.

Walking Parish Footpaths

Our last walk of the year was at Pyworthy, earlier this month with 14 walkers turning out to brave the threatening rain which never really materialised. The planned route had to be changed due to several days heavy rainfall which made various fields impassable. We never-the-less had a pleasant walk through almost traffic free lanes through Derril & Dux, and returning via Hopworthy Nature reserve.

The walks have been well supported throughout this year and overall the weather has been kind to us with wet weather gear only being needed on a couple of occasions. The programme for next year will be based along similar lines and the new programme should be available in the Spring Newsletter. With the walks programme having been running for two years, all the paths are now in reasonable order and so the walks are moving on from their original purpose of 'surveying for problems' and are becoming more geared to recreational walking which Devon County Council also promotes, for improving peoples health and wellbeing. The "Walking for Health" scheme which is run by the Ramblers Association in conjunction with MacMillan Cancer Support, has been running for twelve years and they are convinced of the benefits of walking regularly for improving one's health. They run a weekly based series of walks centred on Bude on Wednesdays, and around the Holsworthy area on Fridays. The walks programmes and further information can be found on their website at "www.walkingforhealth.org.uk/walkfinder" or, if you do not have internet access contact either of the numbers below. As always there will be a leader who will decide, on the day, whether the path is suitable to use and may therefore alter the published route. Anybody is welcome to come along and new walkers will be made welcome. All Parish Footpaths walks start at 10.00am and the Walking for Health walks start at 10.30. For further information please contact Robert (01409 254211) or Michael (01409 261196).

Footpath 7 – Whitebear Cross to Lower Walland Gate. Whilst the field which this path crosses has recently had electric animal fencing installed around the perimeter, the footpath is NOT blocked. Insulated handles have been provided by both stiles so that people are able to access the fence and continue using the path. Use the insulated handles to break the fence whilst you pass through and then please replace the handles as you found them.

We Wish all our Customers a Merry Christmas

RAW PIPER & SONS

Est. 1975

Kerry Heights, Milton Damerel

Your local aggregate suppliers for:

Top Soil, Sand, Stone, Dry Concrete Mix, Cement
Plum Slate, Chippings (Including Coloured) Terram

Small bags & Dumpy bags available

Collected or Delivered

Tel: 01409 261439



*** **RAW PIPER & SONS – CHRISTMAS OPENING TIMES** ***

Wednesday 24 December – Sunday 28 December 2014 – CLOSED

Monday 29 & Tuesday 30 – OPEN 9 am until 12 Noon – Collection Only

Wednesday 31 December – Sunday 4 January 2015 - CLOSED

Monday 5 January 2015 – OPEN AS NORMAL

Monday – Friday 8am – 5pm & Saturday 8am – 12 Noon

PILATES

Monday Mornings 11.00am – 12.00pm

in Chapel Schoolroom

Need to wear loose comfortable clothing nothing restricting to movement, and a non slip mat.

If you wish to join or know more about this group, contact Di Sluggett, (tutor) on 01409 281637,

Email: chrisanddisluggett@tiscali.co.uk

Please note there will be a break over Christmas

Buttermoor Farm Bed and Breakfast

Wheelchair friendly accommodation.



www.buttermoorfarm.co.uk

info@buttermoorfarm.co.uk

Janey Kirby
Telephone 01409 261314
Mobile 07773108494

Busbys Solicitors

14/11/14

CHRISTMAS IS HERE ONCE AGAIN

Christmas is fast approaching us again, like a steam train. I hope that your preparations go smoothly. The shops have had Christmas trees and decorations up for a number of weeks now, so burn-out might be a problem for us all yet again.

But Christmas lifts the spirits. It is a joyous time to spend with friends and family. Lawyers, like everyone else, like to have some fun. Many will have Christmas parties - a time to relax amongst work colleagues, and perhaps see another side to the person occupying the room next door!

THE CHRISTMAS PARTY

Employers, I think, need to recognise that the Christmas party is in fact an extension of the office environment even when it takes place after the office has shut and is held in a hotel or bar. The consequence of that is that employers are likely to remain responsible in law for any untoward conduct by or towards employees. Assaults by or on members of staff, acts of harassment and instances of discrimination all fall into this category. If complaints are made during or after the party, then appropriate disciplinary guidelines and procedures have to be followed and a thorough investigation will have to be held. Appropriate action, if any, must then be taken.

WISE PRECAUTIONS

Similarly with alcohol. Don't lose sight of the fact that a free bar an employer might provide during the evening may have its own dire consequences. Some people cannot resist a drink, especially when it is free. The intake of excessive alcohol may lead to unpleasant not to say unfortunate scenes. A sensible precaution may be to restrict the amount of free booze made available on the evening. Clearly a word in the shell-like of any aspiring drunk might head off trouble. But it is sometimes easier said than done to ask someone who looks the worse for wear to go easy on the drinking. Providing food early in the evening, or serving a sit-down meal may help soak up some alcohol, so might a disco - anything rather than have a group of people propping up the bar with no diversions.

SEVEN HOUR FREE BAR

One well known case on this subject was fought through the Employment Tribunal. The employees were successful. They had been dismissed after one such party. Free booze had been supplied by their employer. They needed little encouragement to tuck in and get plastered. Their drinking spree lasted for seven hours. They then engaged in a free-for-all - fists flying everywhere. The employer said they had brought shame on the company. They said that he had effectively condoned their behaviour by putting on a free bar for hours. The Tribunal held this was a highly relevant point in their favour, and held that their dismissal was unfair.

FINE LINE

So it can be a fine line which everyone who puts on a Christmas party for staff has to negotiate. Sure, giving everyone a good time is of prime importance. But any employer needs to stage-manage the whole process from start to finish. It is otherwise so very easy to cross that fine line and end up with unintended consequences which can turn very ugly.

HAVE A GOOD ONE

From us all here at Busbys, we wish all readers the compliments of the season. We hope you have an enjoyable Christmas, and a healthy and happy 2015. We look forward to continuing to provide high quality legal services to our community. Feel free to contact us on **01288 35 9000**, and see our advert in this publication.

John Busby
Busbys Solicitors
Bude & Holsworthy

Information about Fare Car circulated to Parish Councils

Holsworthy Cars, the operator of Fare Cars F6 (Bradworthy and rural area to Holsworthy and Holsworthy Hospital) and F8 (rural area to Holsworthy and Launceston), have given notice to surrender the contract after operation on Friday 26th September 2014.

Due to a lack of alternative Private Hire Car operators in the immediate area, some effort has been made to interest other operators - Private Hire, bus companies and community-based organizations. Unfortunately we have not so far been able to secure an arrangement without a substantial increase in cost in relation to the number of passengers on the services - about 32 passengers a month on F6 and 34 on F8.

However, we are engaged with the community transport group in Holsworthy with a view to a replacement for Fare Cars, but unfortunately this would not be up and running for the end of September. In the meantime, Holsworthy Cars have agreed to carry on the F8 Launceston service beyond 26th September until the end of October. Passengers currently using the F8 Holsworthy service are on the route of Bus Service 638, which from 1st October will divert in Holsworthy via Under Lane and Bodmin Street (past Waitrose) - this being the journey on Wednesdays most Fare Car F8 passengers are currently making.

F6 and F8 Wednesdays will therefore cease after operation Friday 26th September.

Details of any future replacement service will be circulated.

Following on to my article on the Ruby Run, re the direction of walking with the traffic being very unnerving.

I've had a verbal telephone conversation with PCSO Raquel Rowe. She was informed that the police, at the time of changing the run/walk direction, deemed it to be much safer. Enquiries will be made and discussed in 2015, when next years Ruby Run will be organised.

Lesley Self



Lizzy's Larder Blackberry Farm

Milton Damerel, Holsworthy Tel No. 01409 261440

We are now taking orders for Christmas

**Place your order and we will get it all ready for you
to collect or we can deliver locally.**

Free Range Turkeys & Geese, Fruit & Vegetables

Home cooked Mince Pies,

Christmas Puddings & Cakes

Local crafts, loads of great gifts & Gift Vouchers

Visit your local award winning farm shop and tearoom



Thank you to all our customers for you support and we wish you a very Happy Christmas.



The Garden Show in September was a very successful day which was enjoyed by all who entered, helped or visited, Best Children entry was won by Kaya Kirby, largest Kelsae Onion was grown by Isobel Fairbrother, the Banksian Medal for most points was won by Jackie Pett whilst the best entry was judged to be a magnificent display of Dahlias from Grace Quance

At 173 the entries were down on last year when over 300 were submitted but the standard was excellent which gave the judges a very difficult task, next years Show will again be in September and we all hope for a record breaking turnout to ensure the event continues annually.

In October Claire Woodbine the proprietor of Pinsla Gardens and Nursery near Bodmin gave a slide show and talk about adding structure to the garden.

November our speaker was Graham Hockin from Halwill Junction who having spent all his life living and working in and around the forests gave a very interesting talk about the changes he had seen in the Forestry Commission.

Our next meeting on December 3rd will be addressed by Geoffrey Pitt an expert hedge layer who will demonstrate the art having carried out work all over the country including the homes of royalty.

NOW FOR THE BAD NEWS

In June this year two of the three man committee charged with running the Society resigned and despite several requests no one has volunteered to replace them.

The existing committee agreed to continue until the December meeting the last to have a speaker booked.

Edgar Pett has shown some interest in taking on the organising responsibility but requires help, if anyone is prepared to serve then please contact Ed on 261277 or through any of the existing committee members (see below) who will ensure your details are passed to Ed.

If a new committee cannot be formed then the existing one is prepared to continue with the responsibility of running the annual Show for as long as it appears to be of interest to local residents.

Why not come to the December meeting, £1 for members £2 for all others, it may be the last one.

Watch out for news of the future of the Society.

Bill Wrighton

John Binns

Nicola Wrighton



**A fine Indian Restaurant in the centre of Bude,
with New Management and a growing reputation.
Fully Licensed and Air Conditioned**

Special Offer - Meal Deal

Sunday to Thursday

(Excludes Bank Holidays and School Holidays)

Starter/Main Course/Rice or Naan/Tea or Coffee

£9.95 per person

Opening Hours

Lunch 12 to 1.30pm (Closed Friday lunch)

Dinner 5 to 11.30pm (Closed on Monday)

11 Queen Street, Bude, EX23 8AY

01288 356 591 01288 359 508

Menu's on our Web Site - www.bayleaf-bude.co.uk



**PVCu WINDOWS & DOORS CONSERVATORIES
KITCHENS & BATHROOMS**

GLASS BALUSTRADES BUILDING SUPPLIES

**Kings Hill Industrial Estate, Bude EX23 8QN
www.kjbromell.co.uk 01288 357020**

- we manufacture, supply and fit double glazed PVCu windows, doors and custom designed conservatories
- we design and supply beautiful, functional kitchens, bathrooms and wet rooms to help you create your ideal home
- open up the view from your patio or balcony with glass balustrading supplied and fitted by our skilled craftsmen
- at our site in Bude we have a large building supplies shop open to both trade and the public.

Come and see what we have to offer!

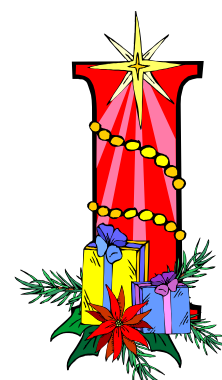
When Christmas is over, we should all be planning our summer holiday Take care as you browse the brochures ...so many essential bits of information may be missing....

These are actual complaints received from dissatisfied customers by Thomas Cook Vacations

1. "I think it should be explained in the brochure that the local convenience store does not sell proper biscuits like custard creams or ginger nuts."
2. "It's lazy of the local shopkeepers in Puerto Vallarta to close in the afternoons. I often needed to buy things during 'siesta' time — this should be banned."
3. "On my holiday to Goa in India, I was disgusted to find that almost every restaurant served curry. I don't like spicy food."
4. "We booked an excursion to a water park but no-one told us we had to bring our own swimsuits and towels. We assumed it would be included in the price."
5. "The beach was too sandy. We had to clean everything when we returned to our room."
6. "We found the sand was not like the sand in the brochure. Your brochure shows the sand as white but it was more yellow."
7. "They should not allow topless sunbathing on the beach. It was very distracting for my husband who just wanted to relax."
8. "No one told us there would be fish in the water. The children were scared."
9. "Although the brochure said that there was a fully equipped kitchen, there was no egg-slicer in the drawers."
10. "We went on holiday to Spain and had a problem with the taxi drivers as they were all Spanish."
11. "The roads were uneven and bumpy, so we could not read the local guide book during the bus ride to the resort. Because of this, we were unaware of many things that would have made our holiday more fun."
12. "It took us nine hours to fly home from Jamaica to England. It took the Americans only three hours to get home. This seems unfair."
13. "I compared the size of our one-bedroom suite to our friends' three-bedroom and ours was significantly smaller."
14. "The brochure stated: 'No hairdressers at the resort'. We're trainee hairdressers and we think they knew and made us wait longer for service."
15. "There were too many Spanish people there. The receptionist spoke Spanish, the food was Spanish. No one told us that there would be so many foreigners."
16. "We had to line up outside to catch the boat and there was no air-conditioning."
17. "It is your duty as a tour operator to advise us of noisy or unruly guests before we travel."
18. "I was bitten by a mosquito. The brochure did not mention mosquitoes."
19. "My fiancée and I requested twin-beds when we booked, but instead we were placed in a room with a king bed. We now hold you responsible and want to be re-reimbursed for the fact that I became pregnant. This would not have happened if you had put us in the room that we booked."

Bradworthy Primary Academy News

Friday 28th November	Christmas Craft Fayre
Saturday 6th December	Village Christmas Tree Lights Service
Wednesday 10th December	KS1 Nativity (Morning)
Friday 12th December	Christmas Dinner/Non School Uniform Day
	KS2 Christmas Disco
Tuesday 16th December	KS2 Christmas Play (Afternoon)
Wednesday 17th December	KS1 Christmas Party (Afternoon)
	KS2 Christmas Play (Evening)
Thursday 18th December	KS2 Christmas Play (Evening)
Friday 19th December	Carol Service in Village Church
Friday 19th December	Last Day of the Autumn Term
Monday 12th January	First Day of New Year Term



Christmas biscuits

Children and grown up's will both love making these delicious, iced Christmas biscuits.

- Preparation time: 45 minutes, plus chilling
- Cooking time: 10-12 minutes

Total time: 55-57 minutes, plus chilling

Ingredients

275g plain flour, plus extra for dusting
 200g firm, slightly salted butter, plus extra to grease
 100g icing sugar
 2 medium egg yolks
 2 tsp vanilla extract
 Tube of Dr Oetker White Designer Icing
 200g royal icing sugar
 2 tsp lemon juice
 Metallic Golden Sands Rainbow Dust
 Dr Oetker Soft Gold Pearls

Method

1. Put the flour in a food processor and add the butter, cut into small pieces. Blend until the mixture resembles breadcrumbs. Add the icing sugar and blend briefly to mix. Add the egg yolks and vanilla and blend again to make a smooth dough. Wrap in clingfilm and chill for at least 1 hour.
2. Preheat the oven to 190°C, gas mark 5. Grease 2 baking sheets. Roll out the dough to 5mm thickness on a lightly floured surface. Cut out shapes using Christmas cookie cutters and space slightly apart on the baking sheets. Re-roll the trimmings and cut out more shapes. Bake for about 10-12 minutes until pale golden around the edges. Leave for 2 minutes then transfer to a wire rack to cool.
3. Decorate how you wish. Pipe outlines around the edges of some of the biscuits using the tube of designer icing, fitted with the fine nozzle. Put the icing sugar in a bowl with the lemon juice. Gradually work in 2-3 tbsp cold water until the icing is smooth and has a consistency that's thick but becomes level when left to stand. Spoon a little icing onto half of the outlined biscuits, spreading it into the corners with the tip of a cocktail stick or skewer. Leave the remaining outlined biscuits unfilled.
4. Dip a pastry brush in the rainbow dust and gently flick a little over the icing. Scatter with gold pearls

Cook's tip

These biscuits will keep in an airtight container for 3-5 days.



A Secret Christmas Cake Recipe

1 cup of water	1 tsp baking soda
1 cup of sugar	1 tsp salt
1 cup of brown sugar	4 large eggs
Lemon juice	Nuts
1 bottle Single Malt Spreyside Scotch	
2 cups of dried fruit	



Sample Scotch to check quality. Take a large bowl. Check the whisky again. To be sure it is of the highest quality, pour one level cup and drink. Repeat. Turn on the electric mixer. Beat one cup of butter in a large fluffy bowl. Add one teaspoon of sugar. Beat again. Make sure the whisky is still ok. Try another cup. Turn off the mixer. Break two eggs and add to the bowl and chuck in a cup of dried fruit. Mix on the turner. If the dried fruit gets stuck in the beaters pry it loose with a drowscriver. Sample the whisky to check for consistency, Next, stir two cups of salt. Or something. Who shivers a bit? Next, stir the lemon juice and strain your nuts. Add one table. Add a spoon of sugar, or something. Whatever you can find. Grease the oven and pass out the fridge. Turn the cake tin 350 degrees Fahrenheit. Don't forget to beat off the turner. Chuck the bowl through the thorn window. Check the whisky again and go to bed.

AGRICULTURAL RECORDS – Instalment 3 AD 1541 – 1719

- 1541 Another drought – small rivers dried up
- 1542 A wet summer
- 1552 A law was passed against profiteering in corn
- 1554 Export of wheat prohibited without licence
- 1556 Famine
- 1558 Deficient harvest – scarcity of labour accounted for much loss of corn
- 1563 Export of wheat allowed
- 1566 Severe penalties enacted against export of sheep
- 1586 Harvest poor – wheat rose to 64/- qtr following spring
- 1591 Drought
- 1592 Drought
- 1597 Famine year, wheat to 92s qtr
- 1601 Hugh Platt says wheat yields 4 qtrs average (some to 6-7 qtrs)
- 1604 Exports of grain allowed only below maxima prices Wheat 26/8 qtr, Rye, beans & peas 15/- qtr, barley 14/-
- 1606 Severe flooding – West Country
- 1616 Large scale enclosure of common land began
- 1619 Tobacco growing prohibited
- 1621 Land prices fell by 15% (approx.)
- 1622 Wool reached the nadis of its depression 10/- stone compared to 14/- in 1618
- 1623 Wheat had to be below 32/- for export
- 1626 John Lawrence estimated that 1/3rd of cultivated land in England & Wales was in common fields
- 1627 Prices for poultry given
Turkey cock 4/6 Hens 3/-
Pheasant 6/- Hens 5/-
Partridge 1/-
Goose 2/-
Rabbit 8d
Doz pigeons 6/-
- 1630 Reclamation of fens began
- 1635 Practice of constructing water-meadows began in Wiltshire
- 1638 Gabriel Platts patented a drill (corn)
- 1647 Act of Parliament prohibiting export of wool
- 1660 Export price of wheat raised to 40/- qtr oats 16/- barley 20/- rye & beans 24/-
- 1663 Parliament 'fasted' because of the unseasonable weather Severe (liver) rot in sheep

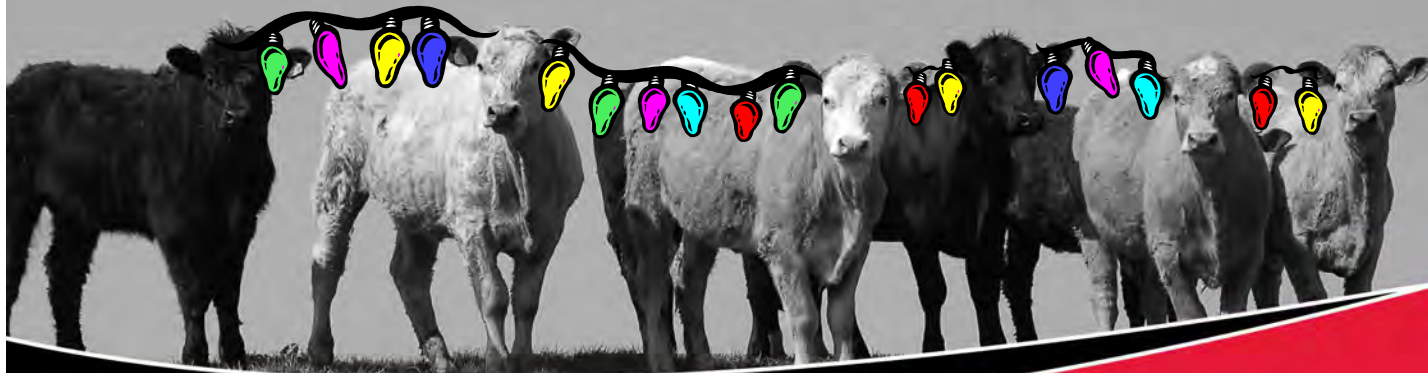
From record compiled by the Late George Harris of West Wonford

- 1664 John Forster urged farmers to grow potatoes as a crop (field)
- 1665 The great plague of London
- 1666 The great fire of London
Act of Parliament ordering burial in woollen fabric to assist the wool trade
- 1669 Publication of Worlidge's 'Systema Agriculturae' describing a horsedrawn drill
- 1671 Tremendous ice-storm in West Country
- 1673 Famine year – people obliged to make bread of beans & peas. Orders of Sessions compelling owners to bury dead-stock – so many about
- 1680 Earthquake in in Somerset. Beginning of another wool industry decline
- 1684 Very severe frost. Shops set up on the Thames
- 1690 Wool prices still low 8/- for Lines Longwool
- 1693 Bad year – much liver fluke. Sheep population about 13,000,000
- 1695 Migration from Scotland to Ireland because of high prices of corn in Scotland
- 1696 Gregory King estimate acreage England & Wales at 39 million. 11m arable 10m meadow and 10m pasture. The average yearly rent for arable was 5/10 and pasture 5/-. Of the arable 10m in corn, beans and vetches, and 1 million flax, hemp, saffron, etc. 640,000 horses & donkeys, 4.5 million cattle, 11 million sheep & 2m pigs. Population estimate 5.5 million people of whom 1,400,000 in towns & 4 m in countryside.
- 1700 Estimated to be 330,000 farmers & 573,00 agricultural day labourers. England & Wales
- 1703 Several violent gales
- 1710 Famine years – wheat 200% up in 2 years – corn export prohibited for 1 year
Average weight of animals at Smithfield – beef 870lbs, calves 50lbs, sheep 28lbs, lambs 18lbs
- 1716 Thames dry at London Bridge
September 14 Combination of high winds, drought & high tides. Turnips first grown as a field crop (Earl of Rothes)
- 1719 Cold spring – then drought – very poor hay harvest. Winter fodder very short. Cows normally selling at £4 sold for 30/-

Focused on Farming

www.bridgmans.co.uk

Animal Health | Feed Supplements | Stock Handling Equipment
Fencing and Timber | Crop Packaging | Fertilisers



- **Newton St Petrock** T: 01409 261321
- **Kilkhampton** T: 01288 321777
- **Kentisbury** (distribution centre only) T: 01271 889239

Bridgmans Direct Sales: Heating Oil • Tractor Diesel • Derv T: 01288 322104
All at very competitive prices. Delivery available throughout Devon Cornwall and Somerset

N.J.BALSDON

Plumbing & Heating Engineer

Central Heating Systems Underfloor Heating

Boiler Installation & Servicing

Bathroom Design & Installation

Oil Tank Replacement

Plumbing & Maintenance

Emergency service

Wall & Floor Tiling



Tel: (01409) 241621/07778 803241

Bradworthy, Devon



Registered Installer



Humphrey Pullar Chimney Sweep

NACS Registered & HETAS Approved

Fully Insured

Professional Chimney Sweeping Service

- * Full Brush & Vacuum Service
- * Pots, Cowls & Birdguards Fitted
- * All Types Of Appliances & Flues Swept & Serviced
- * Traditional & Powersweeping Techniques
- * Chimney CCTV Surveys
- * Bird Nests Removed
- * Smoke Testing



The Old Barn, Pancrasweek, Holsworthy, Devon, EX22 7JN
Tel : 01409 240138 Email: humphreysweep@mac.com

LINE DANCING

At Milton Damerel Parish Hall

Tuesdays 7.00pm to 8.30pm

£2.00 per session

Tel: Lesley 261294 or Mary 261248

We wish all our customers a Happy Christmas and Prosperous New Year!

HORRELSFORD GARAGE



01409 261212



W.SANDERS & SONS LTD

MILTON DAMEREL, EX22 7NU

- * ALL MAKES CAR & LIGHT COMMERCIAL REPAIRS & SERVICING *
- * 24 HR BREAKDOWN & ACCIDENT RECOVERY *
- * PETROL FORECOURT INC LPG, OFF LICENCE & SHOP *
- * CLASS 4 MOT TEST CENTRE * FIAT AUTHORISED SERVICE AGENT *
- * FAMILY RUN FOR OVER 100 YEARS *



National
Lottery
Retailer



For any further information please ask for

Rex or Denyse (Workshop) Penny or Sue (Petrol Forecourt)

A Christmas Get-together.

Friday 19th December 2014

7pm-9pm.



A Christmas Get-together at the Parish Hall.

Father Christmas in attendance so bring the children.


A Seasonal chat with neighbours and exchange Christmas cards

Come and join us, get away from the telly for a couple of hours.

Tea, Coffee, Mulled Wine, Mincepies.

Bring your own drink.

There will be a donation box for the new North Devon Hospice Longhouse in Holsworthy .



HOLDCROFT Lighting

Unit 4d & 4e Kings Hill Industrial Estate, Bude
01288 350627
www.holdcroftlighting.co.uk

HOLDCROFT SFW ELECTRICAL CONTRACTORS

NAPIT Member, Part P Registered, JIB Graded, FSB member

HOLDCROFT HEATING

Electric Heaters, Electric Radiators, Storage Heating, Water Heaters.

HOLDCROFT SECURITY

Security Lighting, Flood Lighting and Photo Cells.

HOLDCROFT ELECTRICAL WORK

Domestic, Commercial, Agricultural & Industrial Installation. Maintenance & Repairs undertaken from extra sockets/lights to new installation & re-wires.

HOLDCROFT ELECTRICAL TESTING

Periodic Tests, Electrical Safety Tests, Public Entertainment Tests, Emergency Lights, Landlords Inspections, Portable Appliance Testing.

At Holdcroft SFW Electrical we pride ourselves on our reliability and highest quality workmanship that is why we are registered with the National Association of Professional Inspectors and Testers (NAPIT) for portable appliance testing, installation tests and inspections, Part P work. We are also members of Trustmark, the scheme supported by the government, the building industry and consumer groups, this scheme helps you to find reliable and trustworthy trades people to make improvements and repairs to your homes.



Telephone: 01288 350104
or mobile: 07721 360 940

Unit 4d & 4e Kings Hill Industrial Estate, Bude, Cornwall EX23 8QN

www.holdcroftsFW.co.uk



Come back to Electrical Heating!

The
Future of
Heating is
Electric!



Why choose Electric Dynamic Storage Radiators from Holdcroft Electrical?

Efficient Electrical heating is 100% efficient and carbon neutral at the point of use. The heat is generated where you need it, not lost in the pipework.

Safe Electricity is a clean safe fuel, no dangerous gases or oils and no annual safety check or maintenance is required.

Lower ownership costs Electric heating systems have no moving parts and can be expected to last 15 years. They are easy to install with no unsightly pipework and minimal disruption and its easy to add to the system when budgets permit.

Green Dwindling gas and oil supplies will mean volatile prices. Electricity, increasingly generated by nuclear, wind, solar and other sustainable sources, is the fuel of the future.

**HOLDCROFT SFW
ELECTRICAL CONTRACTORS**

Unit 4d & 4e Kings Hill Industrial Estate,
Bude, Cornwall EX23 8QN

Call 01288 350104
for a Free, No-Obligation
quote today!

MILTON DAMEREL PARISH HALL REPORT

The Annual General Meeting was held on Monday 8 September 2014. The audited accounts were presented and are printed in this newsletter for your information. Mary Carter retired as Chairman after 5 years and Lesley Self volunteered to take her place whilst continuing as Treasurer and Booking Secretary. Roberta Jackson has become Secretary supported by Kate Moyse as Minutes Secretary.

The new kitchen floor covering was fitted just in time for the Garden Show in September. Estimates have been obtained for improvement works to be carried out in the skittle alley when the Skittles Season ends next spring and some work has been done on the skittle alley roof to seal leaks with further works to be carried out as soon as possible.

Christmas has come early to the Parish Hall this year with the decorations going up in time for the Wine & Wisdom on 22 November and for the enjoyment of other users over the festive season. It has been decided that the proceeds of the Charity Whist Drive and Carol singing will this year go to the *North Devon Hospice, Holsworthy Long House Appeal*.

The proceeds of all other events are used to maintain Milton Damerel Parish Hall - Registered Charity No. 281123.

EVENTS REPORT

The monthly Whist Drives continue on the 3rd Saturday of each month with a small but regular attendance. August Whist raised £47.26, September Whist £38.24, October Whist £41.50 and November Whist £37.80.

About 30 people enjoyed the Pudding Evening on 4 October when a fine selection of puddings were provided along with cheese and biscuits and hot drinks. There was an informal quiz and Peter Self brought along a selection of his interesting artefacts. It was a very enjoyable social evening and a total of £187 was raised.

Thanks to everyone who contributed in any way to the success of these events and to those who attended the events. We look forward to seeing you at other events in the future.

FUTURE EVENTS

CAROL SINGING Thursday 18 December 2014. Start at 6.00pm at Venn Green
Before calling at Holsworthy Beacon, Milton Town and Strawberry Bank
All are welcome to join. Wear warm clothing and bring a torch. Song sheets will be provided.

CHARITY WHIST DRIVE Saturday 20 December 2014. Starts at 7.30pm. £2 per person.

WHIST DRIVE Saturday 17 January 2015. Starts at 7.30pm. £2 per person

COFFEE MORNING Thursday 29 January 2015. 10.00am to Noon
at Westfields, Venn Green home of Mike & Roberta Jackson.

WHIST DRIVE Saturday 21 February 2015. Starts at 7.30pm. £2 per person

BEETLE DRIVE Saturday 28 February 2015. Starts at 7.30pm
Family Fun for all ages
Adults £2. Children (11 yrs and under) £1

CELEBRATING 35 YEARS IN 2015

In 2015 it will be 35 years since the purchase of the building now known as Milton Damerel Parish Hall. To celebrate this occasion it is proposed to hold a 35th Anniversary Sunday Lunch at a date yet to be decided. See the next newsletter for the date of the Sunday Lunch and how to buy tickets.

HIRING THE HALL

The hall is available for hire for events and private functions. Thanks to the Parish Council a laptop computer, projector and screen are also available for use in the Parish Hall at no extra charge. Hire rates have remained the same since 2009 at £5 per hour for the hall and kitchen or £6 per hour if the skittle alley is also used for extra space. Hire of the skittle alley for up to 4 hours costs £10 this includes use of the kitchen.

Booking Secretary Lesley Self 01409 261294 or if unavailable
Secretary Roberta Jackson 01409 261196 or Minutes Secretary Kate Moyse 01409 261151

MILTON DAMEREL PARISH HALL ACCOUNTS FOR YEAR END AUGUST 2014

Summary of Income and Expenses Account

<u>INCOME</u>		<u>2014</u>	<u>2013</u>	<u>EXPENSES</u>		<u>2014</u>	<u>2013</u>
<u>Hall Bookings</u>	Skittles	£335.00	£360.00		Insurance	£412.91	£404.64
	L. Dancing	£186.00	£210.00		EDF	£395.64	£558.63
	60's Club	£88.00	£88.00		Water Rates	£61.05	£67.85
	Whist Drive	£15.00	£15.00		Fire Protection	£39.00	£39.00
	Walk/Social/Band Practice	£25.00	£52.50		Repair/Dec	£1,352.30	£248.78
	MD Gardening Society	£105.00	£105.00		New Tables		£1,229.77
	Meetings etc/PC	£120.00	£150.00		Mugs	£15.00	
	A&C Parties	£107.00	£180.00		Grass Cutting	£40.00	£140.00
	YF. P. Practice		£12.50		Donations	£251.00	£141.30
	Elections	£100.00	£200.00		Vouchers	£35.00	£45.00
		£1,081.00		£1,373.00		£2,601.90	£2,874.97
<u>Fund Raising</u>	W & W	£956.50	£925.00		W & W	£405.01	£396.82
	W.Drive	£1,098.00	£684.00		Licences	£42.00	£42.00
	F.Skittles	£150.90	£194.20		F Skittles	£29.90	£32.34
	C.Morning	£120.00	£97.50		W.Drive	£357.23	£174.59
	Beetle Drive	£172.00	£158.50		Beetle Drive	£20.00	£18.00
	Walk	£320.60	£204.00		Bingo		£100.00
	Carol Singing	£166.00	£141.30		Walk	£94.95	£52.00
	Bingo	£50.00	£349.00		Pudding		
	Pudding Evening	£147.00			Evening	£10.00	
						£959.09	£815.75
		£3,181.00		£2,753.50	<u>P.H. TOTAL</u>	£3,560.99	£3,690.72
					<u>EXPENSES</u>		
	Sale of PH Items		£12.00				
	Hire of Tables	£14.00					
	Grants	£150.00	£1,576.00			2013/14 Income	£4,581.82
	Donations	£63.50	£405.00			2013/14 Expenses	£3,560.99
	Interest	£92.32	£64.10			Profit	£1,020.83
		£319.82		£2,057.10			
	<u>P.H. TOTAL INCOME</u>	£4,581.82	£6,183.60				
	B/Fwd August 2012/13	£7,762.58			Coventry B.S.	£8,734.25	
	Profit 2013/14	£1,020.83			Float	£49.16	
	TOTAL	£8,783.41			TOTAL	£8,783.41	

Assets as at 31st August 2014 as per Insurance Policy 12/02/14

Value of Parish Hall £215,309 Value of Contents £5,924



Police Co-ordinator

PCSO - Raquel Rowe - Holsworthy Police Station – Tel. 101

Local Co-ordinators

Strawberry Bank:	Roger Copp - Tel. 261681
Gratton:	Edgar Pett - Tel. 261277
Whitebear & Fore Street	Edgar Pett - Tel. 261277
Venn Green:	Mike Jackson - Tel. 261196
Holsworthy Beacon:	Jackie Beckles – Tel. 261484
Gidcott	Anne Hamilton-Clark - Tel. 261303

“Crimestoppers”

Two questions which come up on a fairly regular basis are: 1) What is Crimestoppers?, and 2) Are they really anonymous? Crimestoppers is actually a registered charity which has been set up to run independently from the police. In this way it can receive information from the public and pass it on to the police without the giver of the information having to reveal their name or other details. Apart from not needing to give your name etc., the call cannot be traced and so your anonymity is secure. It doesn't matter why the person wishes to remain anonymous this aspect remains sacrosanct. The source is never revealed nor will they need to go to court. Information can be passed on by phone on 0800 555 111 or also, still anonymously, via their website www.crimestoppers-uk.org.

New Phishing Scam

Scams in many forms have become commonplace when using the internet but the National Fraud Intelligence Bureau (NFIB) has warned of a new type of email that is currently circulating. The fraudulent email will have an attachment which, once opened, will download malware onto the victims' computer. The emails are very realistic and purport to come from a legitimate company and frequently say that their invoice is attached. Curiosity may say open the attachment to find out what it is all about but **please don't**, as it will then be too late. If you are not expecting an invoice or something similar then it is in all probability a fake and you should contact **Action Fraud** either by phone or online. Action Fraud is the UK's national fraud and cyber crime reporting centre. The phone number is **0300 123 2040** or online at www.actionfraud.police.uk where you will be guided through the simple reporting process. You will also be asked to forward the suspect email, after which it should be deleted to prevent being accidentally opened in the future.

Reporting Lost Property

The police have recently launched a new on-line reporting service specifically for lost property. It is accessed directly at the site www.reportmyloss.com or via the button on the home page of Devon and Cornwall Police. This new site is completely separate from the existing reporting option on the D & C Police site and is very user friendly, taking you through each stage step by step. At the end of the process you will be allocated a Crime Number in case this is needed for an insurance claim and you also have the option of going back to your report at a later time to amend and update it. You also have the facility to get a print of the report. The new facility is available countrywide and whilst many forces are making a small charge for the reports, both Devon & Cornwall and Avon & Somerset Police are not charging as they believe that the scheme will be self financing from the savings in police time involved in completing manual reporting forms.

Our PCSOs have asked us to pass on their thanks to everybody who has responded to their various requests for information that have been put out over the past twelve months. They also join with us, as this will be the last newsletter this year, in wishing everybody a very Happy Christmas, Safe and Peaceful New Year.

Please remember not to leave your valuables in your vehicle.

PLEASE BE VIGILANT!

**Don't hesitate to ring the Police on 101 for non-emergency
or 999 if you see a crime taking place.**

PCSO 30099 Raquel ROWE PCSO 30643 Mark JAMES Holsworthy Police Station

Holsworthy Rural Policing Update:

The below thefts have occurred:

Holsworthy Hamlets: A 4x4 vehicle with trailer was parked insecure and unattended were stolen

Washing machine that was left on the driveway were stolen

Bradworthy: Generator

Thornbury: Swimming pool cover



Shed Burglaries which occurred overnight on Friday the 7th of Nov and Saturday the 8th of Nov

Bulkworthy: Numerous items of power tools were taken

Wickies grey/black grinder, boschs circular saw, petrol grass trimmer, tyre inflator, damaged to ride on lawn mower, flymo cordless hedge trimmer, electric hedge trimmer long blade qualcast, electric hedge trimmer short blade, stihl 230 petrol chainsaw, light weight petrol hedge trimmer straight shaft brush cutter and bench grinder

Halwill: Hand tools and power tools

Sutcombe: Power tools and lawn mower stolen

Black Torrington: Three properties which had their shed burgled. The items that were taken were 2 pedal cycles, strimmer, hair products.

Cookbury: Entry gained but nothing was stolen

Criminal Damage to Properties:

Clawton: Damaged to a vehicle parked secured and unattended

Sutcombe: Damaged to quadbike

St. Giles on the Heath: Hedge damaged

Milton Damerel: Criminal damaged to a vehicle

Bradworthy: Damaged to a fence

Incidents of deer poaching in around Clawton area

Sheep worrying which occurred in Holsworthy Hamlets

Merry Christmas from Holsworthy Neighbourhood Police Team

Please remember to keep presents and valuables away from outside view, keep your windows and doors secure at all times and mark your new presents and valuables with smart water

Smart Water

Holsworthy Police are working in conjunction with Farm Watch and Neighbourhood Watch and were launching the SMART WATER on Wednesday the 3rd of Dec 2014 at the new market in Holsworthy

Smart Water is a colourless liquid that fluoresces yellow under ultra-violet (UV) light and contains a unique forensic fingerprint. Smart Water provides proof of ownership, linking property to the rightful owner and criminals to a crime scene.

Smart water is highly robust, even when used outdoors and you can use to protect almost anything, including:

- Farm machinery
- Horse tack
- Lawn mowers
- Stone works
- Stable equipment
- Trailers
- Quad bikes
- Metal infrastructure

Christmas Word Search

ANGELS

BABY

BETHLEHEM

DECORATIONS

DONKEY

FRANKINCENSE

GOLD

HOLIDAY

JESUS

JOSEPH

MARY

MYRRH

PRESENTS

PUDDING

SANTA

SHEPHERDS

SNOW

STOCKING

TREE

TURKEY

P	Y	D	J	O	S	E	P	H	V	H	E	U	U	P	V	N	A
E	T	U	E	M	A	P	L	D	H	V	X	L	R	B	Z	D	Y
B	G	U	N	C	Q	H	U	E	U	M	G	L	E	E	O	C	S
Z	S	P	R	C	O	Y	R	X	E	H	N	W	S	T	Y	P	D
F	M	B	I	K	A	R	W	R	I	M	I	K	U	H	M	I	X
H	M	Z	O	D	E	Z	A	G	Y	B	D	A	S	L	V	Z	T
I	M	G	I	Z	G	Y	X	T	Q	M	D	K	E	E	Q	R	Q
U	L	L	M	G	L	E	D	L	I	Y	U	L	J	H	E	I	A
V	O	G	N	I	K	C	O	T	S	O	P	P	P	E	O	Y	N
H	L	M	R	O	S	J	R	S	J	K	N	L	B	M	S	R	G
S	V	Y	Y	A	Z	T	Q	B	D	G	J	S	C	H	D	T	E
N	F	R	A	N	K	I	N	C	E	N	S	E	E	Y	U	D	L
O	B	C	L	S	L	U	Q	E	G	S	K	P	B	H	O	L	S
W	N	F	L	H	G	C	I	H	S	I	H	A	N	N	Z	D	N
K	N	J	W	K	I	O	O	I	G	E	B	S	K	W	X	L	U
V	W	T	B	G	I	Q	L	V	R	O	R	E	L	B	E	Q	Z
L	N	N	A	T	N	A	S	D	U	M	Y	P	P	Q	O	P	P
V	Z	N	M	A	R	Y	S	B	B	X	W	H	A	M	H	I	F

WHAT'S ONa selection of local events in Holsworthy and North Devon

Holsworthy

WHAT?	WHEN?	WHERE?
Pantomine: Babes in The Wood	Saturday, 26 th January to Saturday, 7 th February @ 7.30pm. also Saturday	H.A.T.S. Tel:01409 253826 www.holsworthytheatre.co.uk
Drama, classical music, opera, children's shows, popular music (including rock, jazz, folk and roots), contemporary dance, ballet, amateur shows, visual arts and community events		Queen's Hall Theatre, Barnstaple Box Office: 01271 324242 www.northdevontheatres.org.uk
Pantomine: Jack & The Beanstalk	Saturday, 13 th December to Saturday, 3 rd January 2015. Afternoon and evening	
North Devon Gang Show	Wednesday, 18 th February to Saturday, 21 st February @ 7.15pm	
Films, Live Events – Theatre, Music, Visual Arts, Regular & Special Workshops for Children and Adults		The Plough, Torrington Box Office: 01805 624624 www.ploughartscentre.org.uk
National Theatre Live: (live broadcast) Treasure Island	Thursday, 22 nd January @ 7pm & Wednesday 18 th February @ 2.30pm	
Royal Shakespeare Company Live: (live broadcast) Love's Labour's Lost	Wednesday. 11 th February @ 7pm & Wednesday, 4 th March @ 7pm	

The newsletters group members are:

Nicky Martin	n.martin337@btinternet.com		Regular contributors and features
David Taylor	mdnlad@hotmail.co.uk	261577	Treasurer and Advertising
Rose Haynes	rose@grawley.co.uk	261577	Regular contributors and features
Grace Millman	grace.millman@btinternet.com	261251	Regular contributors and features
Margaret Stannard	maggiestannard@yahoo.co.uk	261486	Regular contributors and features
Terry Fairbrother	terry@remedy-it.co.uk	261775	Newsletter Compiler
Lesley Self	lesley.self@btinternet.com	261294	Regular contributors and features

Letters, comments, news and articles, etc., can be emailed to mdnews@miltondamerel.com or to any of us individually. Our correspondence address is Chapel View, Milton Damerel, EX22 7PB. We want to hear from you with letters for inclusion, topical issues, features you like and also changes to improve the content and style for future editions. We also need every-one to let us know special birthdays, births, anniversaries, and other congratulations. Also tributes to parish residents.

Advertisements

Conditions of acceptance. Orders for insertion of advertisements in this newsletter are subject to the approval of the members who may refuse or alter any copy. The newsletter and the members:- a) accept no liability for any loss or damage caused by an error or inaccuracy in the printing of any advertisement. b) Shall not be liable for any loss caused by the failure of the advertisement to appear on any particular day, in any specified position or page or by its failure to appear at all, and they reserve the right to refuse to continue its publication regardless of terms and conditions of any order or contract. Trades Descriptions Act 1968—All traders are reminded of the needs to ensure that goods offered for sale by advertisements comply with all relevant provisions of the above mentioned act.

To advertise in this newsletter contact David on 01409 261577 for more details.

The deadline for submissions of articles and advertisements for the next newsletter is 13th February 2015

What's on Diary

Page

Church Gardening	12 Dec	1pm	6
Concert - The Valley Voices (Hols Beacon Methodist Church)	14 Dec	3pm	7
Carol Singing - Milton Damerel	18 Dec	6pm onwards	24
Christmas Get Together - Parish Hall	19 Dec	7pm - 9pm	22
Charity Whist Drive - Parish Hall	20 Dec	7:30pm	24
January Saturday Church - St Peters	10 Jan	10am	7
Whist Drive - Parish Hall	17 Jan	7:30pm	24
Church Gardening	23 Jan	1pm	6
Coffee Morning - Westfields	29 Jan	10am	24
Church Gardening	20 Feb	1pm	6
Whist Drive - Parish Hall	21 Feb	7:30pm	24
Beetle Drive - Parish Hall	28 Feb	7:30pm	24

Carol Services

Carol Service (Holy Trinity) with Bradworthy Choir	16 Dec	7:30pm	6
Carol Service (St James)	18 Dec	7pm	
Carol Service (MD Methodist Church)	21 Dec	11am-12pm	5
Carol Service (Hols Beacon Methodist Church)	21 Dec	11am	7
Family Friendly Cribb Service (MD Methodist Church)	21 Dec	4pm	5
Carol Service (St Peters)	21 Dec	6:30pm	7
Christmas Day Holy Communion - St Peters	25 Dec	11am	7
Christmas Day Service Holy Trinity	25 Dec	11:30am	7
Family Carols (MD Methodist Church)	28 Dec	11am	5

Regular Events

Bible Study	Mondays 7.30-9pm
Mobile Library	Wednesdays – every four weeks 3:45pm - 4:30pm
MD & District Over 60s Club	1 st Tuesday of each month (not Jan) 2.30pm
Line Dancing	Tuesdays 7-8.30pm
Gardening Society * see page 17	1 st Wednesday of each month (not Jan) 7.30pm
Parish Council meetings	3 rd Wednesday 7.30pm
Coffee Morning – Holsworthy Beacon Methodist Church	Last Thursday of each month 10am
Methodist Morning Service	Sundays 11am
Parish Church Holy Communion	4 th Sunday of each month 11.30am
Parish Church non Eucharist Service	2nd Sunday of each month 11.30am
Pilates	Monday 11:00 - 12pm
New Baby & Toddler Group Methodist schoolroom	Tuesday morning 10.30 till 12

December 2014

S	M	T	W	Th	F	Sa
	1	2	3	4	5	6
7	8	9	10	11	12	13
14	15	16	17	18	19	20
21	22	23	24	25	26	27
28	29	30	31			

January 2015

S	M	T	W	Th	F	Sa
				1	2	3
4	5	6	7	8	9	10
11	12	13	14	15	16	17
18	19	20	21	22	23	24
25	26	27	28	29	30	31

February 2015

S	M	T	W	Th	F	Sa
1	2	3	4	5	6	7
8	9	10	11	12	13	14
15	16	17	18	19	20	21
22	23	24	25	26	27	28