
MILTON DAMEREL

PARISH NEWSLETTER

Winter 2025

101st Edition

*Merry Christmas
&
A Happy New Year*



RHS Rosemoor.

As the winter months draw in, its not all grey skies and rain. In the garden at this time of the year there is still striking colours to be found, the winter classic *Ilex* (Holly) comes into its own this time of the year, evergreen leaves adorned with brightly coloured berries, proving irresistible for our local blackbirds.

Rosemoor has a Plant Heritage National Collection of *Ilex* that are planted throughout the garden, some have variegated foliage, adding yellow to the evergreen leaves which can complement or clash with the berries, depending on your taste. Some have yellow berries, some red, and in rare cases like *Ilex verticillata* 'Winter Gold' orange berries, which are displayed on the bare stem of this non evergreen species.

It's not just the *Ilex* which are showing off their berries at this time of the year. *Callicarpa* showcases iridescent purple fruit in the winter. *Callicarpa* is literally named after the striking fruit it produces, the name is derived from the Greek words 'Kallos' meaning beautiful and 'Karpos' meaning fruit. A deciduous shrub which means the berries stand out even more without foliage to obscure them. Growing to roughly three metres in height and width they will produce a better display if planted in a sunny position. The most common and easily available cultivar is *Callicarpa bodinieri* var. *giraldii* 'Profusion', and there is a reason for this, it is a reliable heavy fruiting cultivar.

If all this colour is just not enough, on selected dates from the 21st of November through to the 30th of December, RHS Glow, our stunning annual illumination event is back. After hours the garden is transformed giving the chance to see the structures of Rosemoor trees in a completely different light and experience the winter trail in all its technicolour glory.

By Sam Southgate, Horticulturist

December events at Rosemoor

The Magic of Christmas Craft and Food Fairs – indoors in our event space. 6 and 7 December.

Welly Walk Adventure – Festive Fun in the garden with the Education Team, suitable for children aged 5 years and under. 8 December. Booking essential.

RHS Glow, our stunning annual illumination event. Check website for details selected nights 21 November to 30 December. Booking essential.



Ilex verticillata
'Winter Gold' RHS



Callicarpa bodinieri var. *giraldii* 'Profusion' RHS

The Market Café

Open Tuesday – Friday 9.00am till 2.30 pm

All-Day Breakfast – Sandwiches – Burgers
Weekly Specials, or pop in for a Tea or Coffee
Eat in or Take Away!

LJ & VH Harris

Find us at Kivells, Holsworthy Livestock Market,
New Market Road,, Devon, EX22 7FA

The Market Café

On Tor

Mobile catering provided for your event !

Contact Linda; 07800 865 295
themarketcafeholsworthy@gmail.com

G Haworth

Painter & Decorator

Specialising in Quality Homes & Listed Buildings
Traditional & Contemporary Decorative Finishes

Milton Damerel

☎ 01409 261 301 📞 0790 33 66 926

@ galhaworth@gmail.com

CONTENTS

| | |
|---------------------------------|--------------|
| RHS Article | 2 |
| Chapel News | 4/5 |
| Church News | 6/7 |
| Gardening group | 7 |
| Parish Hall | 8/9 |
| Beacon Solar | 10 |
| Neighbourhood Watch | 11 |
| Evelyn's Walk's | 12/13 |
| What's On | 13 |
| Over 60's | 14 |
| Regular Events | 14 |
| Congratulations | 15 |
| Holsworthy Walk and Talk | 15 |
| Eating Out | 18 |
| The Plough Arts Centre | 20 |
| Useful contacts | 22 |

There is no Milton Damerel Parish Council
Report for this edition

Centenary Photograph Competition win £10

To celebrate newsletter editions reaching the hundreds, 101st now, and continuing success of the newsletter there will be an opportunity to submit photographs for use on the front cover of the newsletter.

Please send in your photographs which could be used as the front cover of future editions. Anything will be considered, something old or new just with a Milton Damerel or a seasonal theme. Anyone's photograph chosen and printed for the cover will receive a prize of £10. The only restriction is it must be your photograph and by submitting it you give permission for it to be reproduced as the front cover of the Newsletter.

The next issue will be the Spring edition number 102 and we must receive any photographs by the 16th. of February. Please send to mdnld@hotmail.co.uk

Chapel News – Dec 2025

Dear Friends,

Within the secular world preparations for Christmas started months ago. Adverts starting appearing on television in September and October encouraging us to start preparing early with presents and all the necessities... because you don't want to miss out on some great offers! But for the Christian Church of course we have just started our time of preparation, I speak of course of the Season of Advent.

In the introduction to his book, 'Advent for Everyone A Journey through Luke', Tom Wright speaks of how Advent is about two key points to this season. First, our remembering of the first advent, and the waiting and preparing which took place in the lead up to birth of the baby Jesus. Then second, how we are now waiting and preparing for Jesus to come in glory again, when he returns.

However, within the time of this edition of your village newsletter there are a number of important 'Holy Days' which are observed by fellow Christians throughout the different parts of the church universal. Apart from Advent, Christmas and Epiphany. We have...

- The Conception of the Blessed Virgin Mary (8 December)
- Stephen, Deacon, First Martyr (26 December)
- John, Apostle and Evangelist (27 December)
- The Holy Innocents (28 December)
- The Name and Circumcision of Jesus (1 January)
- The Baptism of Christ (Sunday after Epiphany, 9 January)

Some times we get so caught up in the busyness of the whole season, that we forgot to stop and remember some of the people and events which are so important to the wider story of Christmas and the life of that precious baby which followed. So I would encourage you within the busyness to stop, rest, find time to remember the true meaning of these seasons of Advent and Christmastide. Also, if you don't know much about some of the people or events listed above, have a search and see what you can find.

May the joy of the angels, the eagerness of the shepherds, the perseverance of the wise man, the obedience of Joseph and Mary, and the peace of the Christ-child be yours this Christmas.

Have a blessed Christmas, Frank

Frank Watson

Lay Minister

Torridge Methodist Circuit

Services at Milton Damerel Methodist Church from December to February 2026

Sunday, 14th December
Sunday, 21st December

Café Worship with Mr Roy Harris & friends
All Age Worship with Mr Michael New
Carol Service Tea/Coffee & Mince Pies

Sunday, 11th January
Sunday, 18th January

All Age Worship with Mr Duncan Withall
Café Worship

Sunday, 8th February
Sunday, 15th February

All Age Worship with Revd Paul Booth **Holy Communion**
Café Worship

Our 2 services per month, normally held in the Schoolroom at 11am, are inclusive of all ages from the youngest to the eldest. In December the services are switched for Christmas arrangements, but normally the 2nd Sunday service is led by one of our Ministers or Lay Preacher, and an activities table for children is provided. The 3rd Sunday service is in Café Worship style and is inclusive of activities, crafts, songs, readings, etc., for all to contribute and join in. Please come along to any of our services – a warm welcome to you. Tea & Coffee served during Café Worship and following All-Age Worship.

Flower Plan

14th Dec
Christmas

11th Jan
Jane Ashford

8th Feb
Grace Millman

8th Mar
Margaret Fishleigh

Dates of Services at Lake Methodist Church (Shebbear)

On the 4th Sunday of each month, the churches within the Shebbear Church Council, are meeting for morning worship together – **all at 10.30am and at Lake Methodist Church**. Normally these are United Services with members of St Michael's Parish Church, Shebbear.

Sunday, 28th December
Sunday, 25th January
Sunday, 22nd February

Preacher: Mr Michael New
Preacher: Mr David Ley **Covenant Service**
Preacher: Mr Duncan Withall

Zoom @ 6.30pm

Wednesday 10th December
Sunday 11th January
Sunday 8th February

Carols led by Mrs Elsie Potter
Revd Andrew Vidamour
Mr David Watson

The service can be accessed via a computer/laptop with camera/microphone, iPad/phone or using the normal phone – even if you have a device with camera/microphone and do not wish to be seen, you can join in without the camera on – please contact Sarah Richards, our Circuit Administrator, on 01237 472649 or email her sarahrichards185@gmail.com for details on how to join the 'meeting'.

Live Stream – Buckland Brewer continue to Live Stream Services on the **Buckland Brewer Methodist Church You-Tube Channel** on **Christmas Day, 28th December, and 3rd & 4th Sundays in January and February**

Recent Highlights – Harvest was well attended and Revd Andrew Vidamour, our preacher, recounted, with pride, that his father (retired Methodist minister living in Guernsey) was delegated from Wesley College, Bristol, where he was in training for the Methodist ministry, to travel to Milton Damerel to lead the Harvest services here in October 1958, in the absence of the planned preacher. Travel from Bristol was by train to Dunsland Cross Station, which was closed under the Beeching cuts in 1966.

The service in 2025 included participation by the children (and not so young children!) in spelling and word finds from the word 'Harvest'. This was followed by a pasty and salad lunch, and deserts, in the Schoolroom. The chapel had been decorated with a delightful range of flower arrangements and with donations of non-perishable and household goods, which were packed into boxes at Café Worship the following Sunday and delivered to Holsworthy Foodbank. 66.75 kgs was the weight of goods donated. Monetary donations received for Chapel funds, less the cost of pasties, totalled £267.50.

Grateful thanks for all the work in decorating the chapel, for all the goods received for the Foodbank, and for all the contributions given for the lunch.

Beetle Drive – we hosted a Beetle Drive on 25th October in support of Connect which assists with funding the Holsworthy Community College Youth Chaplain. The evening included 2 sessions of Beetle Drive games interspersed with food – Pizzas and Deserts. The overall winner of the Beetle Drive games was Ros Watson (Dr Wardle) from Chilsworthy and Lesley Self was awarded the prize for the best drawn beetle in all games. £ 139.70 was raised. Thank you to everyone who came and supported.

Remembrance Sunday – A good number of parishioners, and 2 visitors, gathered by 'Tommy' statue at Holy Trinity Church lych-gate at 10.55am for the Act of Remembrance and 2 minutes silence,. Our preacher, Duncan Withall, brought the Royal British Legion recordings of the Last Post and Reveille and Duncan Bridge recited the Exhortation and the Kohima Epitaph. Thankfully the rain held off for our time there. We then adjourned to the Chapel to lay 2 wreaths at the Memorials, which were laid by Henry Piper and Brooklyn Stevens. A further adjournment was then made into the Schoolroom for our morning service, during which Duncan Withall preached on 'God of the living'. Tea/coffee and biscuits were served at the close of the service.

BIBLE STUDY – 10.30am in the Schoolroom at Milton Damerel Chapel, This is an Ecumenical 'venture' and a warm welcome to anyone interested in joining us. In December we plan to meet on 2nd December and 16th December and will select studies from 'Sing in Exultation' which explores our favourite carols from a Christian teaching view. In January we will return to "Worship – His Love Endures For Ever" by Sundee Tucker Frazier from the Lifeguide Bible Studies series. Please contact David & Janet Fisher (Tel: 07858506973) or Grace Millman (Tel: 01409261251) for further information.

Torridge Methodist Circuit Newsletter - If you would like to receive this monthly Newsletter please let us know. It includes diary details, the preaching plan for all the chapels in the Circuit, information on weekly Bible Study groups, other study events, and news from the Methodist Church. The Newsletter is also available on line at www.torridgemethodistcircuit.org.uk and there is also a Facebook page for the Circuit. Finally, there is also a private Facebook Group, where we share thoughts, prayers and other material – this is Torridge Methodist Circuit Group – if you wish to join please go to this Facebook page and use the Join button.

CONTACTS – *For further information or help please contact: Our Lay Minister: Frank Watson (Tel: 07446157329) Our steward: Jeremy Sharp (Tel: 261548), Property Steward: vacant; Secretary: vacant.*

We wish you joy and peace as you celebrate the birth of the Saviour of the World.
A very Happy Christmas and a Peaceful New Year.

Holy Trinity Church

Dear all

When Does Christmas Begin?

It's official. Mariah Carey has been released from her festive slumber, and somewhere between the tinsel aisle and the garden centre grotto, "All I Want for Christmas" has once again been authorised for public broadcast. For some, this is the moment Christmas begins. For others, it's the cue to reach for the earplugs.

It seems that every year, the Christmas season starts a little earlier. B&M had their decorations up in August, and yes, the 24-hour music and film Channels are live, perfect for those mince pies that have been on sale for so long they might qualify as antiques. Even the adverts have learned to tug our hearts before the clocks go back. And yet, for all the glitter and sparkle, I can't help wondering, when does Christmas really begin for you, for me, for us all? For many, Christmas begins when the family arrives home, or when the tree goes up (and half the lights don't work). For others, it's that first mug of mulled wine, the office party, or the moment *The Snowman* inevitably takes flight again. These are the rhythms of the season, comforting, familiar, and sometimes tinged with chaos. But I've also come to realise that for some, Christmas doesn't begin at all. Not really. For those who have lost someone, or who face another year on their own, the season can feel less like a celebration and more like an endurance test. While some are surrounded by laughter, others are reminded of silence. While some find joy in togetherness, others feel the ache of absence. As a vicar, I see both sides of the season. I've seen the joy of families gathering to sing carols, and I've seen the quiet tears in the candlelight of the Christmas memorial service. The truth is, Christmas holds all of life within it—joy and sorrow, laughter and longing, light and darkness. And perhaps that's exactly the point. Because the story that began in Bethlehem wasn't wrapped in glitter. It was wrapped in cloth and laid in a manger. It wasn't hosted in a palace but in a stable. It didn't begin with plenty, but with poverty. And yet from that fragile beginning came the greatest hope the world has ever known. There's a line in John's Gospel that I often return to at this time of year: *"The light shines in the darkness, and the darkness has not overcome it."* The world can sometimes feel a little darker these days—wars, uncertainty, loneliness, the constant noise of modern life. And yet, the message of Christmas remains stubbornly radiant. It's not that the light ignores the darkness; it's that it shines right into it.

So perhaps Christmas doesn't begin with Mariah Carey, or fairy lights, or the first sip of mulled wine (though all of those have their charm). Perhaps Christmas begins when we catch a glimpse of that light, when we notice kindness in unexpected places, or when someone reaches out just because they care. It begins when we find space to wonder again; when hope feels possible, even fragilely so. For some, that spark might come in church. For others, it might come in the warmth of a neighbour's smile, or the laughter of children, or the simple act of sitting with someone who feels forgotten. The truth is, you don't have to be religious to sense that Christmas still hums with something sacred, something that whispers, *"There is more to life than this."* And maybe that's what Emmanuel, *God with us* really means. Not that God is waiting for us to light the candles or tidy the house, but that He is already here, in the middle of the muddle, in the supermarket queues, in the weary hearts and the hopeful ones alike.

So, when does Christmas begin? For me, it's when I see the first candle lit in a darkened church and watch its glow grow as others join in. It's when the carol singers brave the drizzle, or when someone I least expect says, "I fancy coming to church this year for the Carol service?" It's when, just for a moment, the world seems to pause and even if only faintly, we hear again the angel's message: *"Do not be afraid. I bring you good news of great joy."*

And whether you find that joy in church or in the company of those you love, I hope this Christmas you'll glimpse something of that light. Because even in the darkest times, it still shines. So, yes, Mariah may sing and the shops may sparkle, but the real song of Christmas is quieter. It hums beneath the noise, waiting for us to listen. And when we do, we might just discover that the baby in the manger has been waiting all along—not for perfection, but simply for us.

Mark

Rev'd Mark James, Rector of Bradworthy Benefice
Tel: 01409 251015

The New Rectory
St Peterswell Lane
Bradworthy
Devon
EX227TG

I'm sharing a what3words address to help you find this specific location. Tap to see exactly where it is: [tastes loves leaves](https://w3w.co/tastes.loves.leaves)

<https://w3w.co/tastes.loves.leaves>

Please note: Friday is my day off where appropriate.



The Friends of Holy Trinity Church

The Friends Group is presently being formed to rally members of the community who are interested in the restoration and preservation of the Grade II* listed 13th century Church Building, to secure it for future generations. All are welcome to become a *Friend of Holy Trinity Church*, membership is free; you don't have to be a church goer to become a *Friend*. Please show your support by completing the brief Membership Form enclosed with this Parish Newsletter, indicating how you would like to help. Completing a Membership form will also be helpful to show community support when applying for grants for the major works required for the restoration and preservation of this lovely old building.

The first event to help raise much needed funds was the Cream Tea held on 23rd August which was very well attended and raised almost £400. Thanks to everyone who attended. Thanks also to the volunteers who turned up on the three Working Party Afternoons held over six weeks in September and October and despite unsettled weather conditions much clearing of the perimeters of the graveyard was achieved. Pleasant refreshment breaks are always an enjoyable time to catch up with fellow supporters. The next event is the annual Christmas Tree Festival. This year being held on Saturday 13th and Sunday 14th December with the trees being set up on Thursday 11th and left in place until the Carol Service being held at 7.00pm on Wednesday 17th December, followed by mulled wine and mince pies.

For up-to-date information of *Friends Group* activities see the Parish notice boards, and *facebook*
or email: friendsofholytrinity.md@gmail.com
Roberta Jackson, Chairperson,
Friends of Holy Trinity Church

Friends of Holy Trinity Church, Milton Damerel



CHRISTMAS TREE FESTIVAL

Sat 13th & Sun 14th Dec
2pm to 5pm

You are invited to **VIEW** the trees and decorations, enjoy **REFRESHMENTS & VOTE** for the tree you **LIKED** the best

Mini Tree Hunt for children with prizes on the day

There will be a prize for the tree most 'LIKED'

Individuals, Businesses and Local Organisations
are invited to display Decorated Christmas Trees.
The Church will be open 1.30pm-5pm on Thurs. 11th Dec.
to set up the Decorated Christmas Trees

Any queries contact 01409 261196 or email: friendsofholytrinity.md@gmail.com

All Donations to Church Restoration Fund

THE GARDENER'S GROUP

Our Members are still 17 and we correspond using Whatsapp, 2 still receive emails.

Our main event this year was putting on the Flower and Produced Show in August. This was done with the help of the Parish Hall Committee. The profit of £166 was donated to the Parish Hall. The Gardening Group still own the Trophies and we will continue to pay for the engraving.

We had 24 entrants, 4 less than last year with 194 entries, 9 more than last year. A new trophy was purchased this year to replace the Banksian Medal that RHS Rosemoor provided. We do not have membership now and so the Banksian Medal was withdrawn. The new cup is for the most points received in the Horticultural class. Several people came in the afternoon to view the entries and stayed for afternoon tea that was provided by Sara Lawes and family



Haley and Laura



Wendy

WINNERS

As in main photo Neil Garner and Rory Grant holding the trophies, as Haley and Laura were unable to attend the show.

Horticultural Award..... Most points in Horticultural Class, won by Julie Sage

The Crompton Trophy..... Best in Floral Class, won by Jill Bromley, Jug of Garden Flowers

Children's age 10 to 16..... Alan Poole

Creative Craft Award..... Best in Arts and Craft won by Laura Grant, Paper Roses

Line Dance Trophy..... Best in Produce Class won by Haley Garner, Strawberry Jam.

Children's age 9 and under... Lawrence Woolsey

The Palmer Cup..... Best in Vegetable Class, won by Wendy Preston, Basket of Vegetables.

The Jubilee Cup..... Best in Show, Wendy Preston Basket of Vegetables

Hopefully we will continue to host the Show in future years, but help in putting it on is always required.

Melanie Richardson 261 353 Lesley Self

261 294



Milton Damerel Parish Hall News

Plus, The Flower & Produce Show, A Cider & Pasty Walk, A Quiz Night, A plant Stall and a Sausage & Apple Brunch! Plus, Lesley Self has run 12 Whist Drives. Phew!

The Cafe for Chemoheroes raised £361, and we have just finished a collection for The British Legion Poppy appeal.

Still to come is the Christmas Party with fun and games for all ages and a singalong on Sun 21st Dec. Finally, see The New Year in with friends and neighbours with music and a social. Both of these events are free with a collection for Devon Air Ambulance. Best of all the hall is now a warmer space with the new heating finally up and running.

Next Big Breakfast is January 17th and a chocolate bingo in February, look out for posters and Facebook for details of future events.

I would also like to give a big thankyou to all the volunteers who have stepped up to the plate and helped to run events and helped in the kitchen throughout the year. We couldn't manage without you!

A Merry Christmas and Happy New Year to all.

The Parish Hall

Christmas will be upon us by the time you receive this, the last newsletter of 2025. It has been a busy year and by the end of it we will have run
7 Community Cafes,
3 Big breakfasts = approx. 140 Breakfasts!
4 Bingo Sessions,



MILTON DAMEREL PARISH HALL

Community Cafe & Christmas decoration Making

**Saturday
6th Dec**

10.30 to 1.30

Christmas decoration making.
To take home or place on
the tree in the hall.

Serving hot and cold drinks,
cakes and light snacks

ALL PROFITS IN AID OF PARISH HALL
REGISTERED CHARITY NO. 281123



Festive Fare BINGO!

AT
MILTON DAMEREL PARISH HALL

Sunday 7th December

EYES DOWN AT 3.30PM!

**Come along and win some of
your favourite Christmas treats!**

Find us on
Facebook



23

19

31

ALL PROFITS IN AID OF PARISH HALL REGISTERED CHARITY NO. 281123

• Class 4 & 7 MOT Test Centre

• All Makes Car and Light Commercial
Repair and Servicing

• FIAT Authorised Service Agent

• Petrol Forecourt INC LPG, Off Licence and Shop



W. Sanders & Sons Ltd

Family-run for Over 100 Years

Tel: 01409 261212

For any further information, please ask for
Rex or Denyse (Workshop) | Penny or Sue (Petrol Forecourt)



Horrelsford Garage, Milton Damerel, Holsworthy EX22 7NU, United Kingdom

Beacon solar

A public meeting was held on October 31st in Holsworthy Memorial Hall to inform the local community about the proposed Beacon Solar Project in the Holsworthy Beacon area. It was attended by around 300+ people and was hosted by CPRE (Campaign for the Protection of Rural England) and local group, Stop Beacon Solar and supported by Sir Geoffrey Cox MP. With both groups and our MP voicing their opposition to this proposed scheme raising concerns over loss of agricultural land, the long term impact on existing jobs in agriculture and its associated businesses, the impact on tourism and wildlife and above all the impact on local residents. The Beacon Solar website states that jobs will be created and that local communities will benefit economically and financially from the proposal.

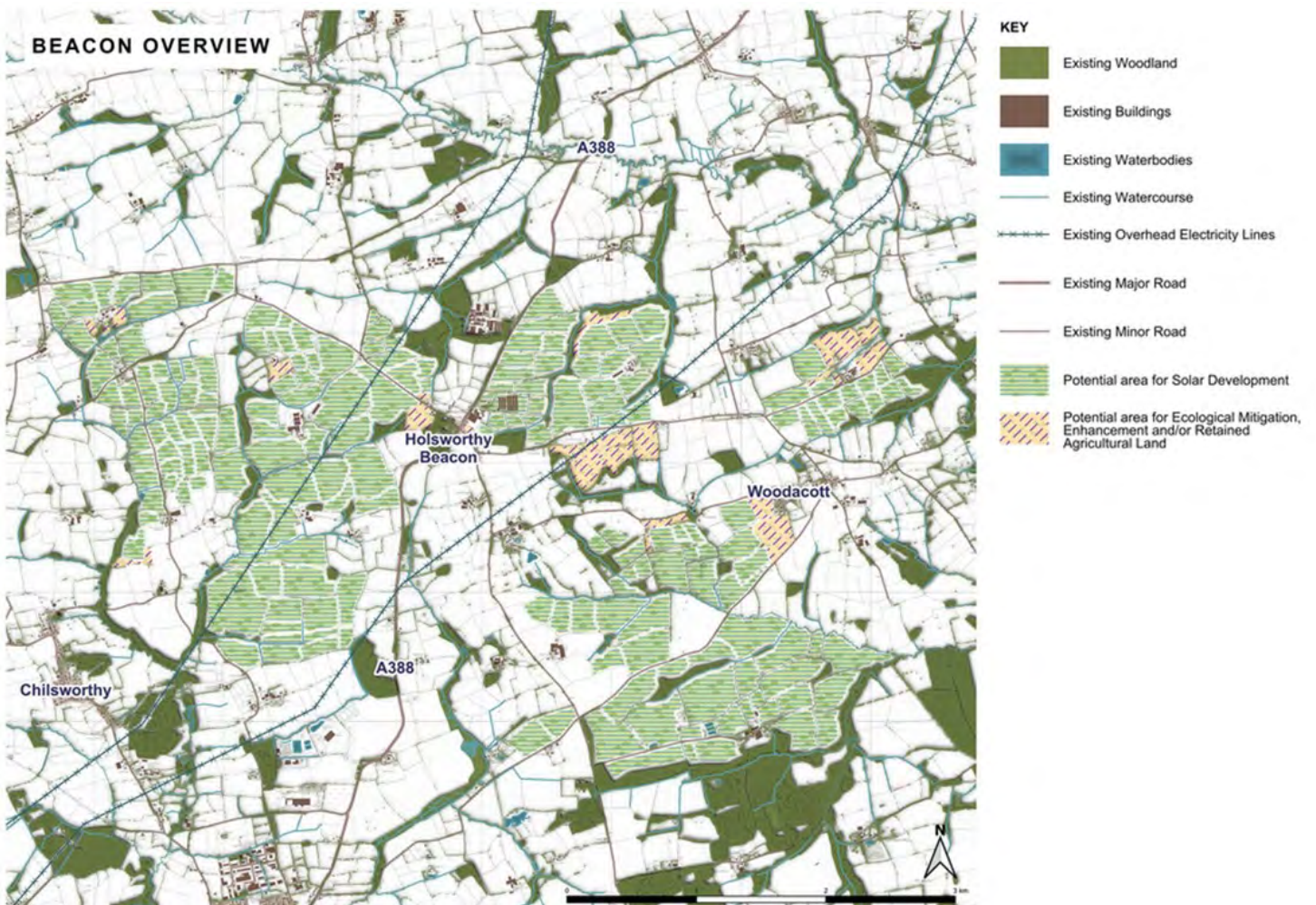
It will cover 2,700 acres of food producing farmland and it will straddle the parishes of Chilsworthy, Sutcombe, Thornbury, Woodacott, Cookbury Wick, and Milton Damerel, dwarfing the arrays around Bridgerule, Pyworthy and Derril which are just 10% of the size. The total area covered will be larger than Barnstaple.,

When completed it will supply 1000MW which will be fed into the National Grid at either Alverdiscott or Pyworthy, via overhead powerlines across the parishes plus there will be a need for battery storage system sites, known as BESS.

This project is currently in the Pre Application phase. This means Beacon Solar are conducting detailed environmental studies, technical assessments and community engagement to help shape the projects' proposals. The company behind the proposal is Galileo Empower, a multinational corporation. This stage is a chance for local communities, councils, parish councils and local stakeholders to share their views before the application is submitted to the planning inspectorate. All feedback received will help inform and refine these proposals. Final approval will not be given until around 2027 and will not be decided by Torridge Council but by the government.

Anyone can attend the Parish Council Meetings at the Parish Hall. These are held on the 3rd Wednesday of the month at 7.30pm and attendees can ask questions or voice their opinion. Further information is available from websites

www.Beacon Solar.com and www.stopbeacon solar.com





Local Co-ordinators:

Strawberry Bank
Gratton, Whitebear & Fore Street
Venn Green

Edwina Hale
Edgar Pett
Mike Jackson

Tel: 261263
Tel: 261277
Tel: 261196

Bude Police Station is open 10 am to 3 pm Monday to Saturday
Okehampton Police Station is open 10 am to 3 pm Monday to Thursday
Barnstaple Police Station is open 9.30 am to 4.00 pm Monday to Saturday

Financial Crimes – scams and financial frauds are now the fastest growing types of crimes across the country and scams in particular, whether by phone or over the internet, are the greatest type of threat that we all face in our Parish. The surrounding areas are still suffering from the more traditional crimes of break-ins and thefts from sheds and outbuildings, together more recently with some sheep rustling, so we still need to remain vigilant if we come across strangers in the area.

Winter Fuel Payment Scam Warning – with the WFP having been re-instated recently by the government, we are already seeing fraudsters requesting people to submit applications via their scam emails. This is a direct request to elicit your personal and financial details. **Be aware of the process.** The most important thing to know is that if you are eligible for the payment, it will be sent to you automatically. You do not need to apply or provide your details. If you have elderly relatives who may be vulnerable and to help them to keep safe, please reassure them that they don't need to do any applying for these payments.

SIM Swap Fraud – This is a clever and we're told an increasingly common type of crime where a criminal takes over your mobile phone number. They do this by tricking your mobile provider into switching your mobile phone number to a new SIM card that they control. Once they have your number, they can access online accounts and steal your money and personal information. They do this by gathering personal information about you from various sources, including social media, data breaches, and phishing attempts. Once they have your details they contact your SIM provider and are able to pass the security checks to request your number is transferred to a new (their) SIM card. They then have access to all your phone and contacts. To protect yourself, you need to use strong passwords and set up Multi Factor Authentication. It is also recommended that you review your online presence, making sure that the privacy settings are set and that the information which you provide is minimal.

The Metropolitan Police have produced a useful and interesting booklet covering all types of scams. It is only available in 'pdf' format and can be down loaded from the Devon & Cornwall Police website. Just type 'scams' in their search box and you will find it under 'Personal Fraud & How to Prevent it'. There is also a separate version aimed at businesses.

Holsworthy Police Station – At the time of writing, we still don't have a Holsworthy dedicated PCSO and continue to share with Torrington, when the need arises. The remaining team of Sgt. Donna Gutteridge and PC Bradley Ithildin has recently been strengthened by the addition of Police Inspector Ewan Seear.

Finally – If anyone is into candle making and would like some reclaimed wax to use (foc), please get in touch with Edwina.



As this will be the last newsletter of the year
We would like to wish everyone a very
Happy Christmas and a safe New Year



Evelyn's Walk (8/9/25)

On Monday 8th September, we repeated the route that we had last done in Halwill in October 2021. We have walked other routes in Halwill & Halwill Junction since then but it had effectively been four years since last walking this route. We parked near the Church of St. Peter & St. James & walked down the lane to Horsebridge. There is in fact more than one old stone bridge at this point & upon close inspection, the inscription dates one of them as going back to 1930. We turned left & walked up the hill & around a right hand bend before joining the footpath on the right hand side. This took us across a grassy field & we were



watched with interest by a horse & pony in an adjacent paddock. Previously, there had been an Appaloosa so maybe the property has new owners. At the bottom of the hill, we crossed the route of the old railway & the River Carey. It was a bit of a clamber up the other side & it wasn't slippery as such but the carpet of acorns added an extra challenge to the climb. By this stage, we had all warmed up & were quietly regretting wearing so many layers. We enjoyed a breather whilst soaking up the glorious view & tranquility in the morning sunshine. The footpath became the entrance drive for a few properties at Blagaton. We then turned right along the lane. When we reached the T-junction at Quoditch Cross, we discussed whether to take the short cut back to the cars along the road via Horsebridge (one mile) or whether to turn left & follow the footpath through Langaforde Farm. The consensus of opinion was the latter & I assured everyone that we would know that we were nearly back when we could see the Church tower. Interestingly, it wasn't evident at all as the trees must have grown taller with the passage of time. Just as we were negotiating our way around a field of turnips, the heavens opened & then we had hail. You wouldn't believe how wet we got in such a short space of time. I had envisaged visiting the Church but the prospect of returning home & putting on dry clothes was the preference. I may have put a few people off joining me on a walk for evermore after that soaking.

Evelyn's Walk(13/10/25)

On Monday 13th October, we met in the Parish Hall car park at Clawton. I was grateful to Maralyn Bailey for confirming that we wouldn't be causing any inconvenience as I know how well used the hall is for all sorts of community events. We repeated the route that we did in October last year as it's well liked & there's always somebody who hasn't done it previously, even residents of the parish. We turned left down the road & joined the footpath that's clearly marked on the right. The route was well marked



taking us through a couple of lush grassy fields. We reminisced how the series of six galvanised self-closing gates used to be a series of challenging stiles until DCC improved the situation. We also reminisced about walking along the edge of fields planted with maize. That added a whole new dimension to a footpath walk. When we reached Higher Sellick, the footpath took us through a gap in the hedge. If you blink, you will miss it & end up back on the road. We were greeted by a herd of inquisitive cows but they soon lost interest as they were actually more interested in following the leader of the herd into the adjacent field than us. We followed the footpath through a couple more lush green fields heading towards Hole Park. We did some more reminiscing about the beautiful hanging baskets that Joy Allin used to have every year. They were an absolute joy to behold. When we reached the road, we turned right & then right again which brought us back to the Parish Hall. Along the way, we had an opportunity to talk to the landowner across whose fields we had been walking & say how much we had enjoyed our walk. It's a lovely circular route taking about 1.5 hours.

You are welcome to contact me if you need any information.

Evelyn Sharman Tel: 01409 259 848 Email: evelyn.sharman@btinternet.com

Evelyn's Walk(10/11/25)

On Monday 10th November, we met at Higher Larkworthy Farm with kind permission of the Kirk family. This is very much a working farm & so we were especially grateful for their kind hospitality whilst normal farming activities carried on. I don't think anybody anticipated the sudden downpour between leaving home & arriving at the farm. We were all very grateful for the shelter of a barn whilst seriously contemplating whether we actually wanted to get a soaking!! Nobody changed their mind & so we set off along the concrete drive towards the main A388 which is where the footpath officially starts. We



We beared left part way along the drive through Lower Larkworthy Farm. This is another working farm but a lot of the original buildings have been converted into holiday accommodation over recent years. The footpath took us past a couple of very cute ponies tucking into a hay net & then we cooed over what are known as "the cutest sheep in the world". The Valais Blacknose ewes were in a field on one side & the rams on the other. Their horns were amazing! The footpath took us across a couple of lush green fields & then a wooden footbridge over the stream. We then had a bit of a climb the other side but a horse & a pony in an adjacent field gave us a reason to take a break. When we reached the lane at Henford, we turned left & went down the hill. The photo was taken on the bridge at the bottom. Of course we then had the climb up the other side & it's steep!! At the top of the hill, we ventured alongside Kit Hill House which is being renovated. It has a new roof & fantastic chimneys. How lovely that the property is being brought back to life by a new owner. We followed the privately owned track back towards Higher Larkworthy Farm enjoying the far reaching views along the way. It's a lovely walk of approx. two miles & I omitted to say that the sky cleared & the rain stopped soon after setting off which made it all the more enjoyable.

The next walk will be on Monday 8th December. We will set off from The Square in Bradworthy at 10am. You are very welcome to contact me for more information.

Evelyn Sharman Tel: 01409 259 848 Email: evelyn.sharman@btinternet.com

WHAT'S ON

Arts & Entertainment in our area

HATS Theatre, Holsworthy
www.holsworthytheatre.co.uk

HATS is an amateur theatrical society in Holsworthy, having their own 250-seat theatre and produce plays and pantomines for the local community. Also the theatre is a venue for other entertainment:

GRASCOTT FIREWOOD

tel. no. 01409 281393
email: info@grascottfirewood.co.uk
website: www.grascottfirewood.co.uk

*Loose Logs • Nets • Kindling • Kiln Dried
Local & Sustainable*



Holsworthy Amateur Theatrical Society
presents

ROBIN HOOD

Mon 2nd - Sat 14th
February 2026

7.30pm (Saturday Matinee 2.30pm)

Tickets (£12 adults/£10 16years and under) available online from:
www.ticketsource.co.uk/holsworthytheatre
from Saturday 1st November 2025, 9am.

HATS BOX OFFICE OPEN 1st November 2025, 9am-2pm. 01409 253826
and then every Saturday, 10am-2pm from 10th January 2026

Ticketsource telephone booking: 0333 666 3366. Mon-Fri 9am-7.30pm and Sat 9am-5pm.
(Calls charged at local rate)

HATS Theatre, Bodmin Street, EX22 6BH. Charity Number: 1110237

MILTON DAMEREL AND DISTRICT OVER 60's GROUP

19th August our trip was first, Ashford Garden Centre for Coffee. We then went onto Ilfracombe where the weather was quite pleasant. A few people took a horse and carriage ride around the streets. Others browse in the various shops, before boarding the coach back to the Pelican at Barnstable, for Fish and Chips on our homeward journey.

16th September we stopped at the Kingsley Village Service Station, near Fraddon for coffee. We then caught the train from St Erth to St Ives. This was only £2.25pp and the view of the coastline was lovely. St Ives has lots of interesting lanes and shops to browse and several restaurants for a meal, as we had to eat before leaving. The weather was very pleasant.

21st October we stopped at the Old Well Garden Centre, near Cullompton for coffee. This was a really lovely Garden Centre with a large shop and plenty of interesting plants. We then went onto Street and Clarks Village Outlet. The weather was good and only rained when returning to the coach for the homeward journey. We had to eat before leaving and Street and the Outlet had a varied choice of eateries.

Our last meeting of the year will be in November. We will be having our Christmas Lunch once again at the Royal Hotel in Bideford, which is now under new management. The menu is slightly different from previous years. After lunch the coach will take us onto Barnstable for a bit of Christmas Shopping. For this trip the coach will be leaving Holsworthy Memorial Car Park at 10.30am, with pick-ups on route, Football ground, Holsworthy Beacon bus stop, and then Venn Green bus stop. Our lunch is booked for 12 noon.

Coach for the coach trips leaves Holsworthy Memorial Hall car park at 9am. Then normally picks up at, the Football Field, Venn Green and Holsworthy Beacon. This depends on what direction we will be travelling in.

Please book with Iris Fry on 01409 261322 or 07968 326462.

Although we call ourselves 'Over 60's Group', you do not have to be over 60 years of age to become a member. All ages are welcomed to join us for a social afternoon and any Coach Trip. Once members have booked a coach trip, any remaining seats are available for friends of the group. We do use Milton Damerel Community Page to say if any seats are available.

Our regular meetings are on the first Tuesday of each month, from 2.30 to 4.30 at Milton Damerel Parish Hall. Membership is £4 and monthly subs £2. This does include a raffle ticket, tea/coffee and Biscuits. Our Coach Trips are £11 for members, who attended that month meeting and £13 for Non Members. These are on the 3rd Tuesday of the month.

New Members always welcome

Chair: Linda Gifford,
Vice Chair: Margaret Walters,
Treasurer: Iris Tel 261 322,
Vice Treasure: Dora Reed
Secretary: Colin Boucher



Regular Events

| | |
|---|---|
| Milton Damerel Over 60's Club – Parish Hall | 1 st Tuesday every month 2.30pm |
| Parish Council Meeting - Parish Hall | 3rd Wednesday every month |
| Whist Drive – Parish Hall | 3 rd Saturday every month 7pm for 7.30pm |
| Chapel Sunday Worship | 2nd Sunday every month 11 am |
| Chapel Café Worship | 3 rd Sunday every month 11 am |
| Holsworthy Walk & Talk | Every Monday & Friday 10.30am. |

Holy Trinity Church services monthly.

For dates and times see the church notice board
or search **bradworthybenefice.org**

CONGRATULATIONS



To:-

Craig and Nanette from Horrelsford who tied the knot on 27th September.



WELCOME



To:-



OUR SYMPATHIES



To

The family of David Cleverly of Hillside, Haytown, who died in October.
Sheila Daniel and family on the recent loss of her mother and their gran,
Mrs May Gay, of Woodford Farm.



We are sorry if we miss any occasions for this page, our coverage is only as up-to-date as YOU provide information to us. see contacts page for details. Thank you.

Holsworthy Walk and Talk

One of our recent walks took us to Duckpool, which is situated between Bude and Kilkhampton, the sun was shining and made for an iridescent sea. Having parked in the designated space, on which was also parked a trailer selling coffee and cake, we set out back up the access road and out over King William's Bridge which was built by Parson Hawker of Morwenstow in 1836. Parson Hawker was a colourful character and is well known for his writing of poems and letters from 'Hawkers Hut'. He was also known for his compassion by giving Christian burials to shipwrecked seamen washed up on the shore of his parish. A steep climb then took us through some woodland and ancient tracks and out to Stowe Barton, an historic walled property currently owned by The National Trust. There is said to be archaeological evidence of a Tudor Mansion on the site, superseded by a house built by the Grenville family which was with subsequently demolished in the 18th century following the death of the last Grenville. Our walk continued through fields and woodland coming out into the tranquil hamlet of Coombe complete with ford and convenient footbridge.

The following week we visited Germansweek on a wet morning, parking in a lay-by just next to the northern tip of Roadford Lake. The reservoir was looking quite depleted so we may need rather more wet days to restore water levels by next spring. Our walk took us along roads, tracks and fields at the end of which several people with the means to record how many steps they had achieved announced an average of 7,000 steps. All devices recorded a different number of steps so it may depend upon length of stride or legs! According to my Google search the recommendation of achieving 10,000 steps a day for optimum health originated as a marketing ploy, but studies suggest that 7,000 steps a day can significantly reduce health risks with benefits continuing to increase up to a point varying on age and health conditions.

Our Monday Level 1 Walks in the Park had 20 continue to grow with 15-20 participants each week. With Stanhope Park having several seats along the circuit around the Park it is ideal for those who only wish or feel able to walk a short distance, take a rest and then either carry on to the next seat, complete the circuit or head back to the Youth Centre for coffee and biscuits. It is an ideal opportunity for anyone wanting to resume activity following injury or illness or indeed formerly active people looking for the opportunity to socialise in a friendly, supportive environment.

If you would like to join us on any of our walks to visit local places, meet new people and enjoy the benefits of walking our current programme of walks is available. Walks start at 10.30 and are **FREE**. Membership forms are available from our Volunteer Walk Leaders prior to the start of the walk.

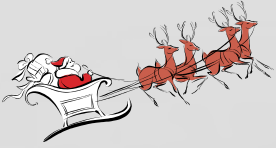
Our website has lots of up to date information, together with our current programme of walks, details below.



Contacts:
holsworthywalkandtalk@gmail.com
<https://holsworthywalkandtalk.co.uk>
Gillian Aston 07584 677 784



A few members of our group admiring the donkeys in a field at Bradworthy



Farm Business Services

Supporting your rural business

RSJ Farm Business Services can provide a complete solution to all your farm business and administration needs.

- *Business Planning and Financial Forecasting*
- *Grant Funding and Stewardship*
- *Nutrient Management Plans and NVZ*
- *Soil Management Plans and Soil Testing*
- *Hedgerow Assessments*
- *Farm Audit Preparation*
- *Agricultural Compliance*
- *Bookkeeping*
- *and more!*

Contact us today to find out how we can help you.



01409 261 218



info@rsj.farm



www.rsj.farm



@rsj.farm



Traditional Building & Renovations

Lime Rendering & Plastering

Cob & Stone Repairs

Painting & Decorating

Limecrete Floor Systems

Contact Craig on:

07368 579466

rubyheritage@hotmail.com

Based in North Devon



Congratulations to Craig and Nanette from Horrelsford who tied the knot in a ceremony and reception at Mole resort near Umberleigh on 27th September.

Kivells Estate Agents & Auctioneers

Thinking of selling your property?

- ✓ **Local** experienced team
- ✓ **Established** auctioneers & estate agency sales
- ✓ **Free** market appraisal for sale
- ✓ Your first point of call for **professional** advice

Contact the Holsworthy team today for your
FREE market appraisal:



Daniel Stokes MNAEA
Director



Mark Kivell
Office Manager



Jack Alford
Valuer



William Braunton
Sales Negotiator



Enya Garrett
Property Secretary



01409 253 888
holsworthy@kivells.com
Kivells Property Suite, Market Square,
New Market Road, Holsworthy EX22 7FA

Formerly Martin & Co

corner stores

IN STOCK NOW

We're in the corner of the square

NOW SELLING BEDS

Visit our Bradworthy showroom to see our range of beds and mattresses.

**THE SQUARE
BRADWORTHY
EX22 7TB**

01409 241 421 | sales@cornerstorecarpets.co.uk | cornerstorecarpets.co.uk

Formerly Martin & Co

corner stores

CARPETS

IN STOCK NOW

We're in the corner of the square

SUPPLIED & FITTED

FLOORING

CARPETS • VINYL • WOOD • RUGS

Visit our Bradworthy showroom to see our wide range of flooring.

**THE SQUARE
BRADWORTHY EX22 7TB**

01409 241 421 | sales@cornerstorecarpets.co.uk | cornerstorecarpets.co.uk

Eating Out

We splashed out on another nice meal out, this time for Anne's birthday. A small French restaurant, Le Petite Monde in Bideford town was the choice. The menu is predominantly locally sourced fish with a choice of small dishes, sharing platters or a full 3 course. The owners Florian, the chef and Lydia the host are really friendly and attentive, gluten free choices are readily available. The starters and mains offer great value and good portion sizes. I had food envy when Anne's starter turned up but quickly got over it when my Gambas arrived, a hearty dish of 9 tiger prawns. For main Anne had Dover Sole which again was delicious. The restaurant is cosy but seats quite a few with tables in the front or back and they are a good size, you're not squeezed on to a tiny table for two. I would thoroughly recommend a visit you will need to book and they are open for lunches Thursday to Saturday and dinner Wednesday to Saturday. Christmas and Newyear times may vary.



Hayley's Helping Hands
Holsworthy - Torrington

Home Help & Respite Care - Housekeeping
Gardening - Decorating
Admin & Online forms - Tidying & Organising
House & Pet Sitting - Animal Care



Hayley Garner
hayleyshelpinghands.com
tel: 07515 770641
email: hayley@hayleyshelpinghands.com

Qualified Care Worker
Fully Insured - Enhanced DBS
Over 30 Years experience working in
Care, Education & Farming

Please call or message me for a helping hand!



**CBL
STOVES**

The Showroom Unit 5,
Red Post, Bude, Cornwall
EX23 9NW
01288 381852
carl@cblstoves.co.uk
www.cblstoves.co.uk



- * Stainless Steel twinwall flues
- * Chimney Lining
- * Iskoern Pumice lining
- * Fireplace alterations
- * Stove installations
- * Wood, Multifuel, Gas & Electric traditional and contemporary stoves and fires
- * Chimney rebuilds
- * Slate, granite and glass hearths
- * Wood and ceramic beams and surrounds
- * Floating shelves

Registered Heating Business 

SUDOKU

By KrazyDad

| | | | | | | | | |
|---|---|---|---|---|---|---|---|---|
| | 6 | | | | 1 | | 5 | |
| | 9 | | | | | | | 6 |
| 8 | 7 | 5 | 9 | | | 4 | | |
| | | | 6 | 1 | | 8 | | |
| | | | | | | | | |
| | | 3 | | 4 | 2 | | | |
| | | 7 | | | 3 | 5 | 9 | 2 |
| 2 | | | | | | | 7 | |
| | 3 | | 4 | | | | 6 | |

Difficulty: Challenging

© 2018 KrazyDad.com

Fill in the blank squares so that each row, each column and each 3-by-3 block contain all of the digits 1 thru 9. Use logic and solve the puzzle without guesswork. For puzzle solving tips, and more puzzles, visit KrazyDad.com.

Word Search

U A Q Y V W W U G W L G E I M N S C X
F H P R S T A B L E Y T Z S O B U F W
R G A L X D N P P S M J O I N O X E N
S T N E S E R P E P R X T S A O W L S
C I R U G D Q L P A S A T Y P N W H S
S Y E S D W B Y T T R E E R T E E H X
T E G Q H U M S H B E K C S V P E U B
W K N N A Z Q G E A F O T V H P Q V Y
B R A B K C I L E P Q F T E H J Q E H
D U M C J L E C R B I N R E D X K S U
R T R G V C Y C R G K D R S L N P S W
I C H R I S T M A S S D D K O T A E Y
Q E A A G P M H U Q J Q O D X B S N U
L E S N I T X X T N S C O B A T T I I
K E C H I L D R E N T H F B Q P Z P M
F L W H L E G N A P I J Y I O Y W P I
P U X V D A V I N E M E S I W J F A X
X M A R Y T J M K P C O G U X K C H A
N T R X L A U K J O S E P H A C L I D

| | | | |
|-------------|-----------|-----------|---------|
| Angel | Donkey | Mary | Stable |
| Baby | Gifts | Mistletoe | Star |
| Baubles | Happiness | Oxen | Tinsel |
| Celebration | Joseph | Presents | Tree |
| Children | Lights | Shepherds | Turkey |
| Christmas | Manger | Snow | Wisemen |

Blackberry Farm Shop

Award Winning

Tel - 01409 261440

Sat Nav - EX22 7NP

www.blackberryfarmshop.co.uk

Open 7 Days

Free Entry

Dogs Welcome

Café

Tea Garden

Plants

Farm Animals

Real Food from a Real Farm Shop



The Plough Arts Centre
9-11 Fore Street, Great Torrington, Devon, EX38 8HQ

December 2025

| | |
|------------|---|
| 03/12/2025 | Café Bar Bistro 10:30 – 14:30, Wednesday-Saturday |
| 05/12/2025 | 2:00pm Film: Blue Moon (15) |
| 05/12/2025 | 8:00pm Music: Voodoo Room: A Night of Hendrix, Clapton & Cream |
| 06/12/2025 | 8:00pm Comedy: Andy Parsons: Please #@\$ off to Mars |
| 07/12/2025 | 10:00am Christmas Makers Market |
| 07/12/2025 | 10:00am Workshop - Visual Arts: Cheerful Christmas Wreath Making! |
| 07/12/2025 | 1:00pm Workshop - Visual Arts: Cheerful Christmas Wreath Making! |
| 12/12/2025 | 2:00pm Film: The Choral (12A) |
| 12/12/2025 | 7:30pm Film: The Greatest Showman Sing-along! (PG) |
| 13/12/2025 | 7:00pm Theatre: A Winter Wonderland |
| 07/12/2025 | 10:00am Christmas Makers Market |
| 19/12/2025 | 2:00pm Film: John Cleese Packs It In (12A) |
| 19/12/2025 | 7:30pm Film: Wicked: For Good (PG) |
| 20/12/2025 | 2:00pm Film: The Choral (12A) |
| 20/12/2025 | 7:30pm Music: Sing-along Carols with the Exmoor Carolers |
| 27/12/2025 | 2:00pm Film: Wicked: For Good (PG) |
| 27/12/2025 | 7:30pm Film: Wicked: For Good (PG) |
| 30/12/2025 | 11:00am Theatre: A Winter's Tail |
| 30/12/2025 | 2:00pm Theatre: A Winter's Tail |

January 2026 (Closed for refurbishments 5th – 18th January)

| | |
|------------|---|
| 02/01/2026 | 10:30am Film: Zootropolis 2 (PG) |
| 02/01/2026 | 2:00pm Film: Zootropolis 2 (PG) |
| 02/01/2026 | 7:30pm Film: Where Is Heaven? (12A) |
| 03/01/2026 | 2:00pm Film: Zootropolis 2 (PG) |
| 03/01/2026 | 7:30pm Film: Springsteen Deliver Me From Nowhere (12A) |
| 12/01/2026 | 7:30pm Workshop: Ploughcappella with Rosa Rebecka |
| 19/01/2026 | 7:30pm Workshop: Ploughcappella with Rosa Rebecka |
| 21/01/2026 | Café Bar Bistro 10:30 – 14:30, Wed-Sat |
| 23/01/2026 | 2:00pm Film: NT Live: Hamlet (12A) |
| 23/01/2026 | 7:30pm Film: TBC |
| 24/01/2026 | 8:00pm Dance: Burns Night Ceilidh with Appledore Ceilidh Band |
| 26/01/2026 | 7:30pm Workshop: Ploughcappella with Rosa Rebecka |
| 28/01/2026 | Café Bar Bistro 10:30 – 14:30, Wed-Sat |
| 30/01/2026 | 8:00pm Music: Not the Cowboys Hoedown! |
| 31/01/2026 | 7:30pm Film: NT Live: Hamlet (12A) |

February 2026

| | |
|------------|--|
| 04/02/2026 | Café Bar Bistro 10:30 – 14:30, Wednesday-Saturday |
| 02/02/2026 | 7:30pm Workshop: Ploughcappella with Rosa Rebecka |
| 06/02/2026 | 2:00pm Film: Avatar: Fire & Ash (12A) |
| 06/02/2026 | 7:00pm Film: Avatar: Fire & Ash (12A) |
| 07/02/2026 | 10:30am Workshop: Plough Writers |
| 07/02/2026 | 1:30pm Workshop: Wassail with Rosa Rebecka |
| 07/02/2026 | 8:00pm Comedy: The Comedy Store |
| 09/02/2026 | 7:30pm Workshop: Ploughcappella with Rosa Rebecka |
| 13/02/2026 | 10:30am Music: Shh Let's Dance - Silent Disco for Adults with Additional Needs |
| 13/02/2026 | 7:00pm Music: Galentines Silent Family Disco |
| 14/02/2026 | 8:00pm Film: Pride & Prejudice (U) |
| 19/02/2026 | 1:30pm Family Theatre: Bubbles in Wonderland |
| 19/02/2026 | 3:00pm Children's Bubbles Workshop |
| 20/02/2026 | 9:30am Children's Circus Workshops: with CIRCUSBERZERCUS |
| 20/02/2026 | 1:30pm Workshop: Circus Workshops with CIRCUSBERZERCUS |
| 21/02/2026 | 7:30pm Comedy: Simon Evans - Staring at the Sun |
| 23/02/2026 | 7:30pm Workshop: Ploughcappella with Rosa Rebecka |
| 27/02/2026 | 2:00pm Film: NT Live: TBC |
| 27/02/2026 | 7:30pm Film: NT Live: TBC |
| 28/02/2026 | 8:00pm Music: Flash - A Tribute to Queen |

THE NEWSLETTER GROUP and GENERAL DATA PROTECTION REGULATIONS

The Newsletter Group has reviewed the guidance on how we should comply with the new requirements which came into force in May 2018. We have compiled 3 documents:

- Milton Damerel Newsletter GDPR Statement Privacy Notice
- Milton Damerel Newsletter Data Protection Policy
- Milton Damerel Newsletter Data Protection Procedures

Which set out the data we collect about individuals and organisations, our policy in collecting data, and the procedures we follow to protect the data we hold. All of these documents are available on request. In summary we hold personal data as openly published in the Newsletter and for the purposes of administration in liaising with our advertisers and subscribers to the Newsletter. Regular readers will note the level of detail included on Page 10, about celebratory occasions and residential 'comings and goings', has been amended to comply with our data protection statements, and most importantly to achieve good protection of personal data, minimising the risk of inappropriate use of the data.

If there are any concerns about the data we hold or publish please contact any member of the Group to request changes to the data. Group members and contact information is listed over the page.

If you would like to receive, or stop receiving, a digital copy of the Milton Damerel News Letter by email, please drop a line to the Compiler.

Disclaimer: The views and opinions expressed in any article are those of the authors and do not necessarily reflect the official policy or position of the Milton Damerel News Letter Team.

Advertisements

Conditions of acceptance. Orders for insertion of advertisements in this newsletter are subject to the approval of the members who may refuse or alter any copy. The newsletter and the members:- a) accept no liability for any loss or damage caused by an error or inaccuracy in the printing of any advertisement. b) Shall not be liable for any loss caused by the failure of the advertisement to appear on any particular day, in any specified position or page or by its failure to appear at all, and they reserve the right to refuse to continue its publication regardless of terms and conditions of any order or contract. Trades Descriptions Act 1968-All traders are reminded of the needs to ensure that goods offered for sale by advertisements comply with all relevant provisions of the above mentioned act.

**To advertise in this newsletter
contact David on 01409 261577
for more details.**

**The deadline for submission
of articles and advertisements
for the next newsletter is**

16th February 2026.

Wades

OF BRADWORTHY

Furniture Beds

**The Square, Bradworthy,
Holsworthy, Devon, EX22 7TD**

Tel: 01409 241228

Email:

wadesofbradworthy@btconnect.com

Web:

www.wadesofbradworthy.com

Useful Contact details:

Parish Councillors:

Stephen Moyse (Chair) Tel. 07966 671543
 Richard Piper (Vice Chair) Tel. 01409 261114
 Jim Richardson Tel. 07866 406977
 Gareth Piper Tel. 07966 558385
 Teresa Walters Tel. 01409 261871
 Peter Bromley Tel. 01409 261838
 Edgar Pett Tel. 01409 261277
 Jane Elliott (Clerk) Tel. 07773679559

Chapel:

Rev'd Rob Blackhall Tel. 01805 628041
 Steward Jeremy Sharp Tel. 01409 261548.
 Property Steward (vacant)
 Secretary (vacant)

Church:

Rev'd Mark James Tel 01409 251015
 Church warden
 vacant

Parish Hall:

Booking Secretary Hayley Garner 07515770641
 or Melanie Richardson 07929 509534 .

Walks:

Gillian Aston Tel. 01409 254642
 email: holsworthywalkandtalk@gmail.com
 Evelyn Sharman Tel. 01409 259848
 email: evelyn.sharman@btinternet.com

Over 60's Club:

Chair: Linda Gifford
 Vice Chair: Margaret Walters
 Treasurer: Iris Tel. 261 322
 Vice Treasurer: Dora Reed
 Secretary: Colin Boucher

Holsworthy Rural Police:

Urgent 999
 Non-Urgent 101
 holsworthy@devonandcornwall.pnn.police.uk

Neighbourhood Watch:

Edwina Hale Tel. 261263
 Edgar Pett Tel. 261277
 Mike Jackson Tel. 261196

The Gardener's Group:

Melanie Richardson Tel. 261353
 Lesley Self Tel. 261294

Newsletter:

Chair

Peter Bromley
 email: pgbromleyuk@yahoo.co.uk

Compiling & Adverts

David Taylor
 Tel. 261577
 email: hgawley@hotmail.com
 email: mdnld@hotmail.co.uk

Treasurer & Advertisers

John Binns
 email: mdnld@hotmail.co.uk

Regular contributors and features:

Rose Haynes
 Lesley Self
 Mel Richardson

SUDOKU Answer

| | | | | | | | | |
|---|---|---|---|---|---|---|---|---|
| 4 | 6 | 2 | 8 | 7 | 1 | 9 | 5 | 3 |
| 3 | 9 | 1 | 2 | 5 | 4 | 7 | 8 | 6 |
| 8 | 7 | 5 | 9 | 3 | 6 | 4 | 2 | 1 |
| 7 | 2 | 4 | 6 | 1 | 5 | 8 | 3 | 9 |
| 1 | 5 | 6 | 3 | 9 | 8 | 2 | 4 | 7 |
| 9 | 8 | 3 | 7 | 4 | 2 | 6 | 1 | 5 |
| 6 | 4 | 7 | 1 | 8 | 3 | 5 | 9 | 2 |
| 2 | 1 | 8 | 5 | 6 | 9 | 3 | 7 | 4 |
| 5 | 3 | 9 | 4 | 2 | 7 | 1 | 6 | 8 |



Window Cleaner

Chimney Sweeping
 Reasonable Rates
 Ring David Seggons
 01409 241702

Now offering a new service
 Carpet cleaning, £2.50 per m/2

JO
07759705549

TURNING YOUR IDEAS INTO CAKE
BASED IN MILTON DAMEREL, HOLSWORTHY
5 STAR HYGIENE RATING
FIND ME ON FACEBOOK AND INSTAGRAM

Oh Crumbs
Cake Design

PAUL NEWMAN
GENERAL BUILDER

Keeping your home up to date

New Build - Extensions & Renovations
Conservatories & uPVC Products
Roofing & Rendering
Plastering & Stonework
Property Maintenance
Kitchens
Bespoke services & much more

Fully qualified and insured.

For a friendly, local and professional approach,
contact Paul for a no obligation quotation or advice.
Please see Facebook 'Paul Newman General
Builders' page for portfolio.'

01409 240331
07919 008161
paulnewman@sky.com

**MIKE
WYE**

The Home Of
Sustainable Building

We supply our comprehensive range of traditional
natural and sustainable building and decorating
products to builders, conservation specialists and
home owners throughout the UK

STEICO

Lime Mortars & Plasters | Natural Insulation
Breathable Paints | Polished Plasters | Clay Plasters
Tools | Technical Advice

Tel: 01409 281644 | www.mikewye.co.uk | sales@mikewye.co.uk
Buckland Filleigh Sawmills, Shebbear, EX21 5RN

Slimming World

taste
the
freedom

Contact your local Slimming World Consultant
and join a warm and friendly group today!

NEW VENUE
Bude
Bude Rugby Club
Wednesdays
5.30pm & 7.00pm

Holsworthy
Holsworthy Memorial Hall
Tuesdays
5.30pm & 7.00pm
Thursdays
9.00am & 10.30am

Essie 07816 686121

slimmingworld.co.uk

Slimming
WORLD
touching hearts, changing lives

Humphrey Pullar Chimney Sweep
 NACS Registered & HETAS Approved
 Fully Insured
Professional Chimney Sweeping Service

- * Full Brush & Vacuum Service
- * Pots, Cows & Birdguards Fitted
- * All Types Of Appliances & Flues Swept & Serviced
- * Traditional & Powersweeping Techniques
- * Chimney CCTV Surveys
- * Bird Nests Removed
- * Smoke Testing

The Old Barn, Pancrasweek, Holsworthy, Devon, EX22 7JN
 Tel: 01409 240138 Email: humphreysweep@mac.com




 **GEORGE PRESTON**
Plumbing and Heating Engineer
 Gasafe Registered
 Nat Gas and L.P.G.

Boiler Upgrades, Installs and Servicing
 Central Heating and Solar
 Landlord/ Commercial Gas Safety
 Certificates

All plumbing works
 from dripping taps to complete
 bathroom installs/makeovers



MOB 07958901777
Contact e-mail
george54preston@gmail.com

 **T 01409 253533**

9 Tamar Business Units
 Holsworthy Industrial Estate
 Holsworthy, Devon, EX22 6HL
www.renew-sw.co.uk

**QUALITY WINDOWS, DOORS,
 CONSERVATORIES,
 SOLAR PV & ROOFLINE**

 **Your Local Home Improvement Specialists**

"Do you need Driving Lessons?"
 Whether you are a complete beginner,
 Partly Trained or a
 Qualified Driver in need of a refresher

Contact- **EVELYN SHARMAN**
 For Professional Driving Tuition (DVSA, ADI)

Tel. 01409 259 848 Mobile. 07885 352 082
 Email. evelyn.sharman@btinternet.com
www.evelynsharman.co.uk

RAW PIPER and SONS
Est. 1975

Kerry Heights, Milton Damerel
 Your local aggregate suppliers for
 Top Soil, Sand, Stone, Dry Concrete Mix,
 Cement
 Plum Slate, Chippings (Including Coloured)
 Terram

Small bags and Dumpy bags available
 Collected or Delivered

Tel: 01409 261439



ATLANTA FIRST AID
TRAINING

Courses Offered:
 First Aid at Work.
 Emergency First Aid at Work.
 Paediatric First Aid.
 Paediatric Emergency First Aid.
 Annual refresher courses.



All courses are certificated and OFQUAL regulated.
 Fully qualified Tutor.
 Can be conducted at your place of work.

Further information please contact:
 Lorraine Buttery Tel: 01409 282956
 email: atlantafaaw@gmail.com