
MILTON DAMEREL

PARISH NEWSLETTER

Summer 2025

99th Edition



Wisteria

Throughout May, wherever you look at Rosemoor, everything is bursting into life. From burgeoning wildflowers in the meadows, to late spring/early summer flowering shrubs like *Deutzias* and lilacs, everything is signalling that summer is just around the corner. And while there are many beautiful plants to admire nothing can beat the awesome, pendulous displays of flowering *Wisterias*.

Originating from Asia and North America, *Wisteria* is the ultimate hardy, show-stopping climber. Capable of growing up to 20m in a year, it's extreme vigour can be off-putting for some. However, the key to controlling growth and maximising your number of flowers, is pruning, not just once a year but twice. Ideally, pruning should take place in two stages. Firstly, in July or August you should cut back all green, whippy stems to within 5-6 buds, then in the following February, further shorten these by pruning them back to 2-3 buds. Doing this restricts vegetative growth and allows wood to ripen which improves the chances of flower buds forming. This may seem like a lot of effort but every May you'll be rewarded with long cascades of beautiful, fragrant flowers.

At Rosemoor we grow a range of cultivars and species of *Wisteria*. Along the plant centre and restaurant terrace you'll see a mixture of Japanese *Wisterias*. One standout cultivar is *Wisteria brachybotrys* f. *albiflora* 'Shiro-kapitan' AGM which has highly scented sprays of white flowers and velvety seedpods. Whereas in Lady Annes, you'll see one of her original plantings, *Wisteria sinensis* 'Prolific' AGM, a Chinese *Wisteria* which has been beautifully trained to cover Rosemoor House in a mass of blue-violet flowers.

While taking in our displays of late spring flowers, make sure to check out our first ever Great Garden Game-a-thon between 24th May – 1st June where you can challenge friends and family to a whole array of games, whether it be giant Jenga or hopscotch.

Emma McFarline, Horticulturist

By receiving and downloading the supplied image/s, you agree to the following terms and conditions. The Royal Horticultural Society will supply the requested image/s free of charge for **the one off purpose of illustrating the attached article. Images must be credited as follows** and deleted after use, and **may not be: distributed, reused or archived. Images or metadata may not be altered** unless prior consent is established. Failure to comply with these terms and conditions will result in the termination of the right to use the image/s.

RHS reserve the right to demand the immediate removal of the image at any time.

- 1 Rosemoor House Wisteria ©RHS/Jason Ingram
- 2 *Wisteria sinensis* 'Prolific' ©RHS/Jon Webster
- 3 *Wisteria* Tea Room ©RHS/Tim Sandall



The Market Café

Open Tuesday – Friday 9.00am till 2.30 pm

All-Day Breakfast – Sandwiches – Burgers
Weekly Specials, or pop in for a Tea or Coffee
Eat in or Take Away!

LJ & VH Harris

Find us at Kivells, Holsworthy Livestock Market,
 New Market Road,, Devon, EX22 7FA

The Market Café

On Tor

Mobile catering provided for your event !

Contact Linda; 07800 865 295
 themarketcafeholsworthy@gmail.com

G Haworth

Painter & Decorator

Specialising in Quality Homes & Listed Buildings
Traditional & Contemporary Decorative Finishes

Milton Damerel

☎ 01409 261 301 📞 0790 33 66 926

@ galhaworth@gmail.com

CONTENTS

RHS Article	2
Parish Council	N/A
Chapel News	4/5
Church News	6
Regular Events	6
Parish Hall	7
Congratulations	8
Bluebell Walk	8
Over 60's	9
Holsworthy Walk and Talk	11
Skittles	11
Gardening Group	12
Neighbourhood Watch	12
Torrington May Fair	13
North Devon's Heritage	14
Westward Ho Blue Flag	14
Evelyn's Walk's	15/16
What's On	19
Dog fouling on the rise	20
Useful contacts	22

ABBOTS BICKINGTON AND CHURCH NEWS

Services are held at St James Church on the last Sunday of each month and not the 2nd as mention in the last Newsletter. They are taken by the Rev. Mark James. A service was held on Good Friday with several parishioners attending.

Now's the time to visit this little grade 2 listed Church to see the hedgerow plants. The Bluebells should be showing now and is always a pleasant sight this time of the year.

Keep your dog on it's lead.

How many times have you seen that or read it but still there are reports in the agricultural newspapers of dog attack on livestock, mainly sheep but also cattle and horses, some people just don't get the message. Most people in Milton Damerel and the surrounding area are aware of the damage a loose dog can do and keep theirs under control but folk new to a rural area may not realise that even the smallest dog can terrorise a flock of sheep, (all dogs have wolves as ancestors and the hunting/killing instinct is still within them) chasing ewes at any stage of their pregnancy can cause stress and abortion and can result in death, farmers are legally entitled to shoot any uncontrolled dog that is worrying their livestock. The next couple of months see's the lambing season in full swing.

Also be very careful walking in any field with your dog where there are cattle, they are very inquisitive creatures and will often come over and have a look at you, if there are cows with calves in the field you could be putting yourself in danger.

Also do you know that if you don't regularly worm your dog & you allow it to defecate in a field & you don't pick up after it, you could cause Neosporosis. Infected dogs excrete Neospora eggs in their faeces, cattle become infected by ingesting contaminated grass or hay, this usually causes them to abort their calf, there is no treatment & generally means the cow has to be slaughtered, so please clean up after your dog & regularly worm them.

Remember to keep your dog under control and keep it on a lead when out and about.

Chapel News – June 2025

Dear friends,

Farewell to Milton Damerel and the Torridge Methodist Circuit

I shall be conducting my last service in Torrington on Sunday 22nd June at 10.30am at Torrington Methodist Church.

This not only marks the end of my eight years as Superintendent in the Torridge Methodist Circuit; but the final service as an active Methodist Minister, before retirement.

I have really enjoyed my years in Torridge. It is a good place to be and a lovely community to be part of. I wonder sometimes if we take for granted what is before our very eyes.

Take Torrington Commons – what a rich resource for us all. I know how much my dogs enjoy it. And in the summer, there is a certain ice-cream van there to tempt us. I give in far too readily.

Then there are beaches nearby; and not too far to Dartmoor, which looms over us. I can see it on a clear day from my study window.

There are woods and rivers to explore. Plenty to see and experience.

But it is the community that I will have fondest memories of. There is a real community spirit in this part of North Devon. Mayfair in Torrington is a good example, but other things too.

I would pay tribute to those who work for our communities; maybe running Village Hall; Parish Councilors; those who represent us at District and County level. They have our best interests at heart; and deserve our full support for all they do.

When we were hit by the Covid pandemic people wondered how we would get on, especially considering how we could support the most vulnerable in our community. What was noticeable was that we discovered that there was so much good neighbourliness going on anyway.

Living in community is about looking out for and helping each other. I shall take that aspect of life here away with me.

I should also mention the Churches of which I have been minister – Milton Damerel Methodist Church, among them. There are some great people and I wish to thank them for their love and support. I shall miss them; but look forward to hearing how they go from strength to strength.

And to you all, farewell and thank you; and please be aware that we live in a great place and alongside some good and kind people.

Blessings

Rob

Revd Rob Blackhall Superintendent Minister

As Rob has mentioned above on **Sunday, 22nd June at Torrington Methodist Church at 10.30am** all the churches in the Circuit will be sharing in a Farewell Service for Rob, when there will be presentations to Rob, and a light lunch of soup & roll, pate, cheeses and desserts will follow the service, to which everyone is invited. If you hope to join in please let Grace Millman (Tel: 01409-261251) know as soon as possible.

Services at Milton Damerel Methodist Church from June to August

Sunday, 8th	June All Age Worship with Revd Paul Booth Holy Communion
Sunday, 15th	June Café Worship – Fathers' Day Celebration See over
Sunday, 13th	July All Age Worship with Mr Roy Harris
Sunday, 20th	July Café Worship
Sunday, 10th	August All Age Worship with Mr Michael New
	followed by Bring & Share Lunch See over
Sunday, 17th	August Café Worship

Fathers' Day Celebration – 15th June A warm welcome to everyone – Fathers, families, friends! Bacon and cheese baps will be served with drinks and activities/games will be based on TV show – “99 to Beat”.

Bring & Share Lunch - 10th August will follow the morning service – bring along your favourites, drinks will be provided, and all are invited to join in the service and stay for fellowship!

Our 2 services per month, normally held in the Schoolroom at 11am, are inclusive of all ages from the youngest to the eldest. The 2nd Sunday service is led by one of our Ministers or Lay Preacher, and an activities table for children is provided. The 3rd Sunday service is in Café Worship style and is inclusive of activities, crafts, songs, readings, etc., for all to contribute and join in. Please come along to any of our services – a warm welcome to you. Tea & Coffee served during Café Worship and following All-Age Worship.

Flower Plan

8th June
Suzanne Askham

13th July
Christine Poole

10th August
Phyllis Piper

Dates of Services at Lake Methodist Church (Shebbear)

On the 4th Sunday of each month, the churches within the Shebbear Church Council, are meeting for morning worship together – **all at 10.30am and at Lake Methodist Church**. Normally these are United Services with members of St Michael's Parish Church, Shebbear.

Sunday, 22nd June **No service at Lake – see opposite**
Sunday, 27th July **Preacher: Mr David Ley (Holy Communion)**
Sunday, 24th August **Preacher: Revd Paul Booth (Holy Communion)**

At Home Worship - Circuit offers Zoom services and Live Stream of Buckland Brewer's services.

Zoom @ 6.30pm – Sunday 8th June led by Revd Rob Blackhall. The service can be accessed via a computer/laptop with camera/microphone, iPad/phone or using the normal phone – even if you have a device with camera/microphone and do not wish to be seen, you can join in without the camera on – please contact Sarah Richards, our Circuit Administrator, on 01237 472649 or email her sarahrichards185@gmail.com for details on how to join the 'meeting'.

Live Stream – Buckland Brewer continue to Live Stream Services on the **Buckland Brewer Methodist Church You-Tube Channel** on the 3rd & 4th Sunday (not 22nd June) in the Month



PALM SUNDAY – We were delighted that Ruth Jones, the Holsworthy Community Christian Youth Chaplain (HCCYC) joined us and led our Café Worship. Ruth is a science graduate. She not only assists with teaching but also provides mentoring support to pupils in the college and provides Christian activities during school time.. She also supports youth activities in Holsworthy. Ruth is employed by Holsworthy Community Christian Youth Chaplaincy, which is an ecumenical charity and she is an associate youth worker with Connect, which supports trainee and associate youth workers in Chulmleigh, Crediton, Holsworthy and Okehampton Community Colleges. Each worker is supported by a Local Support Group (thus, in Holsworthy HCCYC) and funding is gained through donations from individual Christians, local churches, wider Church bodies and Connect. Ruth brought along a range of activities, including materials to construct our Hosanna poster to mark the cries of the crowds that had gathered for Jesus's ride into Jerusalem – the story for Palm Sunday. Holsworthy School pupils living in the parish were invited to come along and we were pleased to welcome some to our Café Worship. Our Hosanna poster remains on display, a joyful addition including for Easter Sunday service.

EASTER SUNDAY – We opened the Schoolroom at 10am for hot cross buns and drinks, to accompany various activities before the Easter celebration service at 11am, which was led by Mr David Ley. A very informal time with interactive participation and a wonderful recounting by David of how he thought named disciples and followers of Jesus may have felt and reacted to the events of Easter morning. Finally, there was an Easter Egg hunt.

BIBLE STUDY – 10.30am in the Schoolroom at Milton Damerel Chapel, This is an Ecumenical 'venture' and a warm welcome to anyone interested in joining us. Please contact David & Janet Fisher (Tel: 07858506973) or Grace Millman (Tel: 01409261251) for further information.– do please contact us if you are interested in joining with us.

Torridge Methodist Circuit Newsletter - If you would like to receive this monthly Newsletter please let us know. It includes diary details, the preaching plan for all the chapels in the Circuit, information on weekly Bible Study groups, other study events, and news from the Methodist Church. The Newsletter is also available on line at www.torridgemethodistcircuit.org.uk and there is also a Facebook page for the Circuit. Finally, there is also a private Facebook Group, where we share thoughts, prayers and other material – this is Torridge Methodist Circuit Group – if you wish to join please go to this Facebook page and use the Join button.

CONTACTS – *For further information or help please contact: Our Superintendent Minister: Revd Rob Blackhall (01805 628041) Our steward: Jeremy Sharp (Tel: 261548), Property Steward: vacant; Secretary: vacant.*

Whist at Milton Damerel Parish Hall

You may not know, Whist is played at Milton Damerel Parish Hall every third Saturday of the Month. We vary from around 16 to 28 people and play in groups of 4. 7 o/c for 7.30, finish around 9.30 to 10. If you like playing cards and especially Whist please think about joining us. We would love to see you. £3 per card and we also have a raffle.

Please note, because the Parish Hall are having an event on 21st June, our Whist evening will **be held on the Saturday before, 14th JUNE.**

Lesley Self

Holy Trinity Church News

Rev. Mark James 01409 251015



The Spirit Still Moves

"You send forth your Spirit, and they are created; and you renew the face of the ground." — Psalm 104:30

There's something quietly powerful about this time of year in Milton Damerel and its hamlets that make up this Parish. The land is alive with movement. You can feel it in the hum of the tractors, in the warm air that lingers into the evening, in the burst of green that wasn't there a few weeks ago. New life keeps arriving, often unnoticed, but deeply felt.

And perhaps, in some way, this season asks us to pause. To look up from the task at hand. To wonder.

In the Christian tradition, this time of year points toward Pentecost, a moment when the followers of Jesus, scared and unsure, found themselves filled with courage, connection, and purpose. The story says the Spirit of God came among them like wind and flame, not to frighten, but to wake them up. To remind them they were not alone. That something bigger, wiser, kinder was at work.

You don't have to be religious to feel the weight of that. Because haven't we all had moments, quiet ones, where something stirred in us? A walk through the fields. A conversation you didn't expect. A sudden sense that life is more than deadlines and weather forecasts. Perhaps you've known loss, or change, or felt something shift and couldn't quite name it.

We don't always talk about these things. But they matter. They are part of the soil of our lives.

At the church here in Milton Damerel, we're seeing signs of new life too. A group of us are coming together, some long connected, some just beginning, to care for this old building, (friends of) responsible for the building. This is after all not just as a place of worship, but is a place that holds memories and moments for so many in the village. A new team is also forming to help us think about what it means to be a church today, not just for those who come on a Sunday, but for all who live and work here.

We don't have all the answers. But we do believe that the Spirit, the same one who renews the face of the earth is still moving. Still nudging. Still gently asking us to pay attention. And maybe to wonder what new thing could grow in us, too.

So as the hedgerows bloom and the hayfields rise, may you know this: you are not alone. Whether you believe, doubt, or simply don't know, there is room for you here. In the quiet. In the community. In the questions.

And who knows? Maybe that stirring you feel, that longing or hope or quiet sense of more, is the same Spirit, still moving.

With every blessing for the season ahead.

Mark

Revd Mark James, Rector of Bradworthy Benefice, Tel: 01409 251015
The New Rectory, St Peterswell Lane, Bradworthy, Devon, EX227TG

Regular Events

Milton Damerel Over 60's Club – Parish Hall

Parish Council Meeting - Parish Hall

Whist Drive – Parish Hall

Chapel Sunday Worship

Chapel Café Worship

Trinity Church Holy Communion

Trinity Church Morning Service

Holsworthy Walk & Talk

Community Café - Parish Hall

1st Tuesday every month 2.30pm

3rd Wednesday every month

3rd Saturday every month 7pm for 7.30pm

2nd. Sunday every month 11 am

3rd Sunday every month 11 am

2nd Sunday every month 11.30am

4th Sunday every month 10.00am

Every Monday & Friday 10.30am.

1st Saturday every month



Milton Damerel Parish Hall News

Everything is ticking over at The Hall. The National grid has completed their work and subject to a ceiling survey the heating installation should be going ahead late May/early June.

Bargain plants were snapped up at our annual plant sale in April and there were plenty of lucky chocolate egg winners at the Easter Bingo. Just recently we held another Big Breakfast and by the time you read this we will have had a quiz night with a Pasty supper. Thanks to Neil and Hayley for setting the fiendish questions.

Our big event this summer is a Midsummer Barbeque when? On 21st of June of course (**note, no** whist that night!) Jim will be firing up the barbeque and cooking up tasty treats. Starting from 4.30pm. There will be live music later from "Wilder Days" a country rock band. Tickets will be on sale prior to the event. Everyone is welcome to bring their own choice of beverage, soft drinks, tea and coffee will be available. Further details will be available nearer the date on posters and Facebook. Just need to book some good weather! But it will go ahead come rain or shine!

Sadly, Yoga and Dancercise have ceased because of lack of support so the hall is now being used less often. The regular whist drives on 3rd Saturday of the month are a regular source of income. New players always welcome and it gets the brain cells going! Sometime in July/August there will be a cider and pasty walk and also look out for schedules for The Flower & Produce show at Sanders and the hall from early July. Thanks for your support from all the committee.



MILTON DAMEREL PARISH HALL
BIG BREAKFAST
SAT 3RD MAY 9.30 - 12.30

Adults £9
Bacon, sausage, black pudding,
egg, hash browns, beans,
toast with butter & jam/marmalade,
juice and a mug of tea or coffee

Kids £4
Bacon, sausage, egg, beans,
juice/squash

Please pre-book if more than 6 in group
Call Mel: 07929 509534 or email: mdp@parishhall@gmail.com
ALL PROFITS IN AID OF PARISH HALL REGISTERED CHARITY NO. 30028

MILTON DAMEREL PARISH HALL
SAVE THE DATE!
SATURDAY 21ST JUNE
MIDSUMMER BBO

4.30PM ONWARDS

LIVE MUSIC FROM WILDER DAYS FROM 6.30 PM

TABLE FOOTBALL • BOW HOCKEY • DARTS

ALL PROFITS IN AID OF PARISH HALL REGISTERED CHARITY NO. 30028

MILTON DAMEREL
FLOWER & PRODUCE SHOW
at Milton Damerel Parish Hall
Saturday 6th September

Schedules available at Sanders Garage or at The Hall

Doors open to public from 2.00pm
Refreshments available

All profits in aid of Parish Hall
Registered Charity No. 30028

MILTON DAMEREL PARISH HALL
QUIZ NIGHT!

Sat 10th May - 7.00 for 7.30pm

£6 per person - includes pasty and teas/coffees
Bring your own beer/wine
Any special diet requests please notify in advance

To book phone/text Hayley Garner 07515 770641
ALL PROFITS IN AID OF PARISH HALL REGISTERED CHARITY NO. 30028

BLUEBELL WALK

Just a grateful thanks to all who supported the Bluebell Walk for Cancer charities at Woodford Farm on 3rd & 4th May. Thanks also for gifts of cakes and help extended on the week-end. The weather was very favourable and bluebells were looking their best. We raised £300 in donations.
Sheila Daniel

A PIECE OF HEAVEN

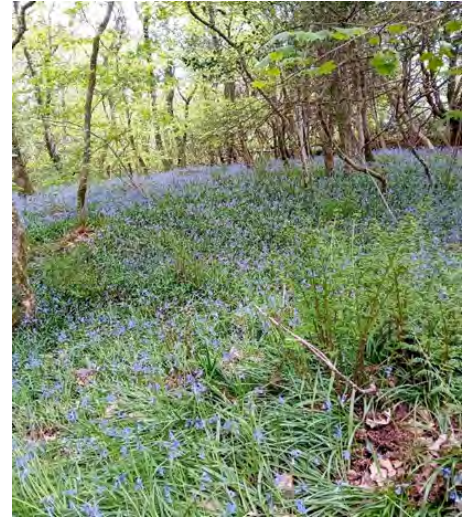
An invite for those could, to a magical walk in Sheila's bluebell wood,
Weather was good, last time we had to wear a rain hood.
This year sun was shining brightly, through bluebells we all trod lightly-
For they grew together so tightly to miss them All, was quite unlikely.

An AMAZING sight a carpet of blue taking breath away, a WONDERFUL view,
So peaceful, walking carefully through a 'Piece of Heaven' this we knew,
Some folk Blessed on seeing a deer and a fox cub looked at others in fear,
But he didn't HAVE to fear, for he was a beautiful sight, that was quite clear.

Years old trees covered in moss had arrows on, so we didn't get lost,
As we walked, leaves were being tossed, just had to kick them at any cost.
When at last back at the top, in welcoming chairs we all did flop.
And a WONDERFUL cuppa with homemade cakes we just had to stop.

Thank you Sheila for bluebell sharing, helping those with burdens bearing,
A nicer afternoon? No comparing, God Bless you in your love and caring.

Maggie Smale



CONGRATULATIONS



To:-

Donald Harris of Beech Park who was 90 in March.



WELCOME



To:-



OUR SYMPATHIES



To:-



We are sorry if we miss any occasions for this page, our coverage is only as up-to-date as YOU provide information to us. see contacts page for details. Thank you.

Home to Local Stray

Meet Barry aka Limpy, who started coming to us at Venn Green on a regular basis a few months ago. Initially he was seen on an occasional basis and a severe limp and avoidance of using a back leg was a concern but he always looked well fed.

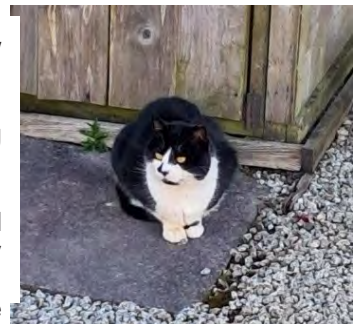
To begin with Barry was an opportunist, taking advantage of our own cat's leftovers being put out for the birds or hedgehogs. When he started to come on a regular basis, and hung around as if asking to be fed, we started making enquiries.

We learned that for about four years Barry had been fed by "Dan at Springfield" who had moved house. We suspect that somebody else has been feeding Barry before he eventually settled himself at Venn Green.

Barry became such a regular visitor for meals that after speaking with Cat's Protection he was easily trapped and checked out by a vet. It was discovered that he had a congenital deformity affecting both legs with one foot having only two toes. He was also found to be neutered leading to the assumption that he may have been somebody's pet originally. Given a clean bill of health, Barry was returned to his stomping grounds by CP, with our agreement to be his overseers.

Barry is a very cautious cat and it may be a long time before he'll allow anyone closer to him other than placing his food bowl down. Our cat Millie, who also came to us as a stray nine years ago, appears to have accepted another animal to the fold. We became the owners of two re-homed Aylesbury ducks last summer and she has taken it all in her stride so much so that she and Barry were found asleep on the patio one morning, not together but within two feet of each other, and we feel that this is a good sign they are prepared to tolerate one another.

If anyone knows of any other information about Barry, we would be happy to hear it.



MILTON DAMEREL AND DISTRICT OVER 60's GROUP

At our Meeting on Tuesday 5th March, our Chair, Linda, prepared a very interesting quiz on our knowledge on Animals and Habitats. All very enjoyable. The first coach trip for 2025 was to White House Service for Coffee, then onto Dawlish and Teignmouth. It was a very wet day, but did dry up by the time we arrived at Teignmouth.

20th May, Cornwall Services for Coffee. Then onto Falmouth. Eat before leaving.
17th June, Blackdown Garden Centre for Coffee. Then onto Weston Super Mare. Eat before leaving
15th July, Newton Abbot for Coffee. Then onto Brixham. Eat before leaving.
19th August, Ashford Garden Centre for Coffee. Then onto Ilfracombe, eat at Pelican, Fish and Chips on way home.
16th September, Trethorne for Coffee. Train from St Erth to St Ives. (Price to be confirmed) Eat before leaving.
21st October, Exeter Services for Coffee. Then onto Street/Clarks Village. Eat before leaving.

Coach leaves Holsworthy Memorial Hall car park at 9am. Then picks up at Football Field, Venn Green and Holsworthy Beacon.

Please book with Iris Fry on 01409 261322 or 07968 326462.

Although we call ourselves 'Over 60's Group', you do not have to be over 60 years of age to become a member. All ages are welcomed to join us for a social afternoon and any Coach Trip. Once members have booked a coach trip, any remaining seats are available for friends of the group. We do use Milton Damerel Community Page to say if any seats are available.

Our regular meetings are on the first Tuesday of each month, from 2.30 to 4.30 at Milton Damerel Parish Hall. Membership is £4 and monthly subs £2. This does include a raffle ticket, tea and Biscuits. Our Coach Trips are £11 for members, who attended that month meeting and £13 for Non Members. These are on the 3rd Tuesday of the month.

New Members always welcome

Chair: Linda Gifford
Vice Chair: Margaret Walters
Treasurer: Iris Tel 261 322
Vice Treasure: Dora Reed
Secretary: Colin Boucher



Farm Business Services

Supporting your rural business

RSJ Farm Business Services can provide a complete solution to all your farm business and administration needs.

- Farm Consultancy
- Budgets and Cashflow
- Environmental Land Management
- Grant Funding Opportunities
- Sustainable Farming Incentive
- Countryside Stewardship
- Farm Audit Preparation
- NVZ Record Keeping

Contact us today to find out how we can help you.

01409 261 218 INFO@RSJ.FARM WWW.RSJ.FARM @RSJ.FARM

Kivells Estate Agents & Auctioneers

Thinking of selling your property?

- ✓ **Local** experienced team
- ✓ **Established** auctioneers & estate agency sales
- ✓ **Free** market appraisal for sale
- ✓ Your first point of call for **professional** advice

Contact the Holsworthy team today for your
FREE market appraisal:



Daniel Stokes MNAEA
Director



Mark Kivell
Office Manager



Jack Alford
Valuer



William Braunton
Sales Negotiator



Enya Garrett
Property Secretary



01409 253 888
holsworthy@kivells.com
Kivells Property Suite, Market Square,
New Market Road, Holsworthy EX22 7FA

Holsworthy Walk and Talk

A glorious sunny morning accompanied 28 of us on our 20th Anniversary walk. The walk which took us over Holsworthy Viaduct, along the Cycle Way and out to the Rydon Inn before returning to Holsworthy was led by Michael Heryet who runs Bude Walk and Talk. Back in the early 2000s Michael and David Arney were approached by Jim White from South West Forest, then based at Cookworthy Forest, who mentioned that South West Forest had funds available for the setting up of walking groups in the area. Michael and David were keen to set up such groups and Bude Walk and Talk and Holsworthy Walk and Talk came into being. Although some of the original walkers are no longer with us, two people who joined Michael and David on that first walk on the 15th April 2005 were present. Both members, Clive and Marion, soon became walk leaders and both are still a very important part of Holsworthy Walk and Talk today.

In February we ran a Walk Leader Training course. Thank you to all who attended and congratulations to John Weighell and Richard Cook who have now progressed to be Walk Leaders. Three other walkers are in the process of completing the process. Walk Leaders and Back Markers are an essential part of the Walking Group and we thank all those who are willing to give up their time and effort to support our ever increasing numbers.

Our walks over the past few weeks have taken us around different parts of the area from Germansweek to Chilsworthy with our level 2 group in Bradworthy on the 4th April. Starting from The Square, we took North Road out towards Quoigate Cross. Before reaching there we turned left along the bridleway, passing a private fishing lake and lodge situated in a lovely sheltered spot. On reaching the farm at Great Dinworthy we turned left onto the lane and back to Bradworthy. The views across to Dartmoor were quite spectacular and it is amazing how far you can actually see when the land is slightly elevated.

Future walks will be taking us to Torrington Commons, Sheepwash and Roadford Lake, a variety of locations which only adds to the interest. If you would like to join us at any time we walk on Mondays and Fridays. All walks start at 10.30 am and are **FREE**. Membership forms are available from our Volunteer Walk Leaders prior to the start of the walk.

Our website has lots of up to date information, together with our current programme of walks, details below.

Contacts:
holsworthywalkandtalk@gmail.com
<https://holsworthywalkandtalk.co.uk>
Gillian Aston 07584677784



Milton Damerel Ladies Skittles

This season has been a great season for both teams.

The top 3 players from "A" and "B" team took part in the Five Founders knockout competition, which was held in Pyworthy on 1st March - going all the way to the final and after a very close match, beating Halwill by just 2 pins.

The league celebrated with a dinner and presentation evening at The Golf Club on the 25th April where trophies were presented to all of the league winners.

Milton Damerel "A" were overall winners of Division 1, with the success of both teams this season - we have also won on aggregate.

Shirley Grills "A" team had the highest average in Division 1, she also won the Edna Youlden cup with the highest over 60's average.

Judith Nicholls "A" team won the Secretaries cup for the highest over 70's average.

Finally, Shirley Grills, Mikaela Rofe and Judith Nicholls from the "A" team have qualified to represent the Holsworthy & District Ladies Skittles League in the Devon County knockout competition, being held in Torquay on the 24th May.

We look forward to the new season starting in the autumn.

Christine Cook

MILTON DAMEREL MENS SKITTLES

The Holsworthy District, Milton Damerel Men's A team, were the overall winners in the League. They also won the Westaway Cup. The B team won the Launcels Cup.

Anthony Down had the Highest Individual Average Score.

Lesley



Local Co-ordinators:

Strawberry Bank

Gratton, Whitebear & Fore Street

Venn Green

PCSO - Jessica (Jess) McEldon – Contact via 101

Edwina Hale

Edgar Pett

Mike Jackson

Tel: 261263

Tel: 261277

Tel: 261196

Bude Police Station is open 10 am to 3 pm Monday to Saturday
Okehampton Police Station is open 10 am to 3 pm Monday to Thursday
Barnstaple Police Station is open 9.30 am to 4.00 pm Monday to Saturday

Annual Parish Meeting: As there were only a few residents attending the recent APM, our annual report is set out below for your information.

“NHW has had very little to do over the past 12 months with missing cats and dogs being main source of peoples concerns. I have reported 4 vehicles which were brought to my attention as being parked in out of the way places and local residents not knowing who they belonged to. All turned out to be legitimate.

Torridge and Rural North Devon is still a very low crime area and is currently 4th in the ratings, behind the Orkney & Shetland Isles in first place, closely followed by Wiltshire and then Norfolk. If you do look at the police crime figures for Milton Damerel they actually show 2 or 3 events each month. However, with one exception these can all be attributed to something that has taken place within the Woodford Bridge complex, and as such has little relevance to the rest of the Parish.

The main ongoing threat to everyone in the Parish are the constant stream of scams which are directed at us, both by phone and on the internet, and it is just a matter of everybody trying to remain vigilant all the time.

We would like to thank the Newsletter Group for allowing us to put an article in each issue, which has the added bonus of reaching everybody in the Parish and not just members.”

Thefts: Break-ins and thefts from sheds and outbuildings are again on the rise in a number of the parishes around us. Tools and equipment which can easily be sold on seem to be high on the thieves target lists so if you are able to ‘property mark’ your equipment in a prominent place it will make it less desirable.

Animal Thefts or Rustling: is also on the rise so if anyone spots activity at unusual times, or animals making an unusual amount of noise during the night, please contact the police via **999** as soon as possible.

Neighbourhood Beat Team: Our NBT which is based in Holsworthy has recently undergone change and our replacement PC is now PC 18754 – Brad Ithildin.

ActionFraud
Report Fraud & Internet Crime
actionfraud.police.uk



THE GARDENER'S GROUP

We have 17 members using Whatsapp and 2 who still receive emails. We have managed to keep in contact and a few gardening problems did get resolved. At the Community Café on 5th April we had a Plant Sale and a profit of £44 was given to the Parish Hall. On the evening of Tuesday 29th April a few members from the Parish Hall Committee and the Gardening Group met at the Parish Hall and tidied up the pots and area around.

We have not managed to organise a group visit to any open gardens as yet, hopefully we will get-to-gether in the summer. We will also arrange a visit to a members garden.

Melanie Richardson 261 353

Lesley Self 261 294

What an amazing few days! The sun shone and a great time was had by all.

The festivities all began on Thursday 1st May, with the children from Bluecoat School doing some fantastic dancing and singing. The May Queen and her entourage looked stunning in their 'Sweet Peas in an English Country Garden' themed outfits. Many thanks need to go to Toni Alexander, who has spent hours designing and making these outfits. Owen Boundy did a fantastic job of styling the hair again this year.

The Littleham Howlers entertained us again this year and the Torrington Cavaliers also took to the stage, with their take on Madness and their crazy wacky races in the afternoon, bringing in the competitive spirit of those keen to take part.

This was followed by the fancy dress music festival on Saturday, where we saw a swarm of bees, the Pope, some airplanes, dinosaurs and so much more take part in the parade being judged by the Mayor, the May Queen and her entourage. A huge well done to all those who dressed up and took to the streets. There was music playing in the square



and other locations throughout the afternoon and evening, and a variety of food trucks to fuel us.

A huge thank you needs to go out to all those mentioned above, and to those who work behind the scenes to make these days happen.

The Torrington May Fair Committee

is a friendly bunch who will always welcome new volunteers. However, what they really need is people to offer a little of their time to steward on these days. If you feel this is something you would like to be part of, please let us know torringtonmayfairsecretary@gmail.com.

Torrington May Fair Committee

Eating out

The Old Station Inn at Blackmoor Gate

A sure sign that summer is around the corner was watching the first Swallows dipping and diving catching insects as we admired the valley view from our table. It is a long time since any trains stopped here but the buildings have been re-invented as a pub/restaurant with a train theme.

Opening from 12noon there is a good choice of starters, main courses and lighter bites though the baguette I had seemed more than a lighter bite it was very filling it came with a lovely salad and nachos. There is a large garden and children's play equipment and the place is very dog friendly.

This is a good stop if travelling further afield to Exmoor and the North Coast.

Celebrating North Devon's Heritage at Merton

On Saturday 5th July the village of Merton will be the venue for a special day of public events celebrating North Devon's world-class heritage. Organised by the Devonshire Association, the day's free programme will highlight the rich heritage of the North Devon Biosphere, which was recognised by UNESCO in 2002 as an area of outstanding international significance.

Merton's Clinton Hall will be the main centre for the day's activities, which are free and open to all. In the morning, starting at 10.30am, there will be two talks. Professor Michael Winter, former Chair of the North Devon Biosphere Partnership, will speak about 'Living in the Biosphere – Past, Present and Future'. He will be followed by the folklore podcaster Mark Norman who will be shedding light on 'The Folklore of North Devon'.

The Clinton Hall will also be the location of a one-day exhibition of local photographs organised by Beaford, who are partnering the Devonshire Association at Merton. The exhibition will show a specially chosen selection of Beaford Archive photographs of North Devon taken by the renowned photographer James Ravilious in the 1970s and 1980s.

The Beaford Archive exhibition will remain open during the afternoon when there will be two further events. For those interested in discovering North

Devon's history there will be a guided tour of Great Potheridge, a grand 17th Century listed building just north of Merton. This was the house built over 350 years ago by General George Monck who played a key role in the restoration of King Charles II to the throne in 1660. The tour will be hosted by Dr Stuart Blaylock, one of Devon's leading architectural historians, and Alastair Rice, the director of the Great Potheridge Activity Centre. Places on this tour are limited so prior booking is essential. For details see devonassoc.org.uk/event/n-devon-biosphere-day-discovery-days/

Also, during the afternoon Scratchworks Theatre will be giving an outdoor performance of their new family production 'The Mushroom Show' on the sports field beside the Clinton Hall. Through games, music and laughs, Augustine Fogwoode (perhaps the world's greatest mushroom enthusiast!) will explore the strange, smelly and surprising life of mushrooms with the help of her puppet friend Goldie. The free show, which is supported by Beaford, is suitable for children aged 5 and upwards. For further details and information on how to book see the Beaford Events page at beaford.org/events.

This day of public events at Merton is one in a series of 'Discovery Days' that



the Devonshire Association is hosting around Devon in 2025. With the support of the National Lottery Heritage Fund these days are part of the Association's 'Celebrating Devon's World Class Heritage' project. Full details can be found on its website devonassoc.org.uk.

Pictured:

Merton Village Stores in 1978

Documentary Photograph by James Ravilious for the Beaford Archive © Beaford Arts Great Potheridge, General George Monck's 17th century house.

Article from Torrington Crier

Westward Ho! proud to fly the prestigious Blue Flag for 22 years in a row

Westward Ho! has been awarded the prestigious Blue Flag and Seaside Award for the summer 2025 season. It is one of only 55 sites across Britain to meet the stringent criteria to achieve both accolades. The Blue Flag and Seaside Awards are aimed at improving the quality of England's coastline and promoting the country's best beaches.

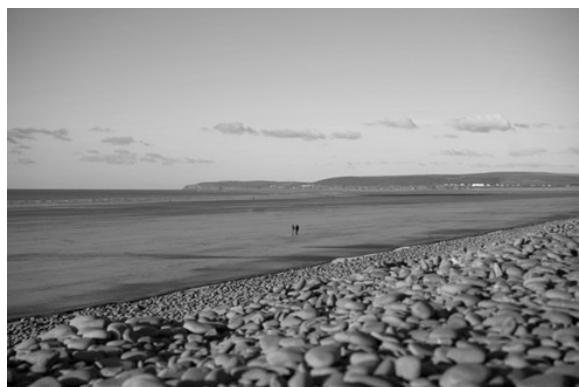
Blue Flag, the world's most recognised award for beaches and marinas, is an environmental education programme managed by Keep Britain Tidy on behalf of the Foundation for Environmental Education.

It is only presented to beaches with water which has achieved the highest classification as set by the EU Bathing Water Directive and has an environmental education programme, and, to qualify, each applicant must meet and maintain a series of stringent environmental, educational, safety and accessibility criteria.

Seaside Awards are presented to the best beaches in England and celebrate the quality and diversity of our coastline.

Among the criteria beaches are assessed against are:

- 1 Safety and services, such as first aid, lifeguards where necessary
- 2 Environmental information including displaying details about local eco systems
- 3 Environmental management, including litter and waste.
- 4 Water quality – Blue Flag beaches must meet the 'excellent' water quality standard as set out in the EU bathing water directive and Seaside Award winners must meet the 'sufficient' standard



Evelyn's Walk (10/3/2025)

On Monday 10th March, nine of us met at Thornbury Holiday Park with kind permission of Lisa, Paul & young Albert. We turned left out of their gate & when we reached Woodacott Cross (I call it Five Ways) we turned left. We were amazed at how wet & muddy this lane was & wondered whether this was an indication that it was going to be too wet to follow the footpath. When we reached Branches Cross, we could have stayed on the lane but we all opted for the footpath which took us across a couple of fields & cut off two sides of the triangle. In reality, it had been wetter on the lane. We turned right along Thorn Lane which enabled us to enjoy far reaching views towards Dartmoor on our right. We spotted a few primroses on the bank & there was some gorse in flower providing some nectar for any bees that were venturing out in the sunshine. When we reached the T-junction, we studied the young Wild Service tree that was planted a few years ago. It seemed to be doing well. We turned right & then followed the footpath immediately on the left. This took us through Meg & Paul's woodland. It's a bit too early for bluebells but there was evidence of Ramsons & we were thrilled to hear a woodpecker. With their kind permission, we took a detour across their field as the next part of the footpath looked very wet & muddy. We headed towards St. Peter's Church & passed what was the original Village School. The building is looking quite sad now but some of the group brightened the mood by reminiscing about social events that used to take place when it was the Village Hall. The sunshine helped to restore the mood when we emerged from the shade of the trees & there wasn't a breath of wind at Windy Cross. In fact it was a glorious spring morning & we had all warmed up considerably during our circular walk of approx. 3.75 miles.



Evelyn's Walk (14/4/25)

On Monday 14th April, ten of us met at Tetcott Village Hall. It was lovely to see everyone but especially nice to see a couple of people that we hadn't seen for a while. It gave us the opportunity to catch up with their news. We turned left out of the car park & walked down the hill. When we reached the sign, we turned right towards Luffincott. This becomes the drive for Luffincott Barton & St. James' Church. It's a very long drive & it isn't surprising to know that the residents don't have to take their recycling to the end of the drive for collection on Monday mornings. We ventured through the farm yard & into the Church which is a Grade 1 listed building & is maintained by the Churches Conservation Trust. It's beautiful for its simplicity but saying that, it has a most attractive barrel vaulted roof & some stained glass windows. From there, we re-traced our steps slightly in order to return to the footpath on our left. This took us across Tetcott Estate & we had the pleasure of the company of one of the farm dogs for a while. We have walked this route previously in August '24 & November '21. It was interesting to note the differences at a different time of year. In spite of the fact that we've had very little rainfall recently, it was still quite squelchy underfoot in lower lying sections & we were very grateful for the boardwalk. There were masses of primroses, celandines, wild garlic, stitchwort, Devon violets, wood anemones & lady's smock. At least that's my names for them. Not everyone called them the same which is largely due to regional differences. Several large trees have come down across the route since we last walked this way. However, we were able to either go over or under their sturdy trunks. The derelict cottage is gradually being taken over by nature & can easily be missed amongst the trees. Once again, we mused about the music teacher who used to live there having to carry her shopping home as it's quite a trek from the nearest road. The footpath brought us to Tetcott Manor & the Church. It would have been nice to stay longer but it was threatening to rain. We joined the lane & turned right which brought us back to the Village Hall. By that stage, it was raining quite heavily & we were glad that it hadn't started any earlier. It's a lovely circular walk of approx. 4.48 miles & took about 2.5 hours but it wouldn't have been as pleasurable if we had all got wet!



The next walk will be on Monday 12th May. We'll be setting off from the Parish Hall in Milton Damerel at 10am. Everyone is welcome but please car share if possible as parking is somewhat limited. You are welcome to contact me for any more information.

Evelyn Sharman Tel: 01409 259 848 Email: evelyn.sharman@btinternet.com

Evelyn's Walk (12/05/25)

On Monday 12th May, we met in the car park by the Parish Hall in Milton Damerel. Looking back in my diary, we hadn't walked in this parish since 2022. I'm not sure how this came to pass but I was reassured that Mike Jackson & Ann Poole were with us to lead the way. We turned right from the car park onto the lane & then joined the permissive footpath on the left by the right hand bend. The carpet of bluebells was an absolute joy to behold. Not many people would remember how we used to scramble up the bank in an ungainly manner. Thankfully, steps were installed some years ago which made our ascent less challenging & more dignified. We then had the benefit of the wooden boardwalk which not only enabled us to admire the bluebells without treading on them but also to pass over the stream without getting our feet wet. As we passed through the galvanised gate into the grassy field, I mused on a previous walk when we encountered inquisitive heifers. One in particular had shown an interest in my rucksack which had caused some hilarity as I was absorbed in helping people over the stile & oblivious to what was going on over my shoulder. Would you believe that just as we arrived at the gate which has replaced the stile, we were joined by a group of inquisitive heifers? We followed the footpath which took us through the beautifully maintained cemetery & we took the opportunity to enjoy the cool of the Church. We were fortunate to have the company of Mike & Ann who were able to point out interesting features. I had a conscience about encouraging people along knowing that we still had quite a walk ahead of us. We turned right & followed the lane towards Blackberry Farm Shop. It was very tempting to pop in for some sustenance but we followed Mike along what is known as "Butterfly Lane". It was quite a steep & stony track so important to watch where we were putting our feet. At the bottom, we followed the footpath on our right which effectively took us through a private garden. Previously, we had enjoyed watching goats frolicking but I think there must have been a change of ownership since we last went that way. There was evidence of a new wooden footbridge & we emerged onto the lane by the beautiful mill building. There are still traces of where the mill wheel would have been on the brick work. We took a moment to enjoy the peace & tranquility before turning left up the hill. This brought us back opposite the Church. We could have turned right & walked down the hill towards our cars but Mike had kindly got permission from a local land owner, John Elliott, to walk around his fields behind the Chapel. It was beautiful following the course of the River Waldon & there were lots of damsel flies to be seen. When we rejoined the lane, we turned left & by this stage we were getting a bit tired so the hill was somewhat challenging. However, we plodded on & returned to our cars having completed a circular route of approx. 4 miles. It had taken us two & a half hours. Praise must go to the P3 volunteers who check the Public Rights of Way (PROWs) in Milton Damerel. The footpaths are so much easier these days since stiles have been replaced with self-closing galvanised gates; steps have been created to save scrambling on hands & knees; board walks & foot-bridges have been installed; & the routes are well marked. It was certainly a pleasure to walk in the parish & we mustn't leave it so long next time!



The next walk is scheduled for Monday 9th June. We'll be setting off from the Village Hall in Chilsworthy at 10.15 which is slightly later than usual. If you would like any information, you are welcome to contact me.



Traditional Building & Renovations

Lime Rendering & Plastering

Cob & Stone Repairs

Painting & Decorating

Limecrete Floor Systems

Contact Craig on:

07368 579466

rubyheritage@hotmail.com

Based in North Devon



Hayley's Helping Hands

Holsworthy - Torrington

Home Help & Respite Care - Housekeeping

Gardening - Decorating

Admin & Online forms - Tidying & Organising

House & Pet Sitting - Animal Care



Hayley Garner

hayleyshelpinghands.com

tel: 07515 770641

email: hayley@hayleyshelpinghands.com

Qualified Care Worker

Fully Insured - Enhanced DBS

**Over 30 Years experience working in
Care, Education & Farming**



Please call or message me for a helping hand!

- Class 4 & 7 MOT Test Centre

- All Makes Car and Light Commercial Repair and Servicing

- FIAT Authorised Service Agent

- Petrol Forecourt INC LPG, Off Licence and Shop



W. Sanders & Sons Ltd

Family-run for Over 100 Years

Tel: 01409 261212

For any further information, please ask for
Rex or Denyse (Workshop) | Penny or Sue (Petrol Forecourt)



Horrelsford Garage, Milton Damerel, Holsworthy EX22 7NU, United Kingdom

Blackberry Farm Shop

Award Winning

Tel - 01409 261440

Sat Nav - EX22 7NP

www.blackberryfarmshop.co.uk

Café

Tea Garden

Plants

Farm Animals

Real Food from a Real Farm Shop

Open 7 Days

Free Entry

Dogs Welcome



Formerly Martin & Co

corner stores

IN STOCK NOW

We're in the corner of the square

NOW SELLING BEDS

Visit our Bradworthy showroom to see our range of beds and mattresses.

THE SQUARE
BRADWORTHY
EX22 7TB

01409 241 421 | sales@cornerstorescarpets.co.uk | cornerstorescarpets.co.uk

Formerly Martin & Co

corner stores

CARPETS

IN STOCK NOW

We're in the corner of the square

SUPPLIED & FITTED

FLOORING

CARPETS • VINYL • WOOD • RUGS

Visit our Bradworthy showroom to see our wide range of flooring.

THE SQUARE
BRADWORTHY EX22 7TB

01409 241 421 | sales@cornerstorescarpets.co.uk | cornerstorescarpets.co.uk

To advertise in this newsletter contact David on 01409 261577 for more details.

The deadline for submission of articles and advertisements for the next newsletter is

16th August 2025.

GRASCOTT FIREWOOD

tel. no. 01409 281393
email: info@grascottfirewood.co.uk
website: www.grascottfirewood.co.uk

*Loose Logs • Nets • Kindling • Kiln Dried
Local & Sustainable*



WoofWorthy
SECURE DOG FIELD

A SAFE SPACE TO HAVE FUN WITH YOUR DOG!

What we offer

- 1 acre field in Holsworthy, Devon
- Beautiful, quiet setting, no nearby roads
- Hardstanding parking area in field
- Fun agility equipment & obstacles
- Long grass enrichment areas
- All weather walking track
- Fresh water available
- Space to run free
- Secure 6 ft fencing
- Exclusive booking

www.woofworthy.co.uk
07887 094320

CBL STOVES

The Showroom Unit 5,
Red Post, Bude, Cornwall
EX23 9NW
01288 381852
carl@cblstoves.co.uk
www.cblstoves.co.uk

- * Stainless Steel twinwall flues
- * Chimney Lining
- * Iskoern Pumice lining
- * Fireplace alterations
- * Stove installations
- * Wood, Multifuel, Gas & Electric traditional and contemporary stoves and fires
- * Chimney rebuilds
- * Slate, granite and glass hearths
- * Wood and ceramic beams and surrounds
- * Floating shelves

Registered Heating Business

WHAT'S ON

Arts & Entertainment in our area

HATS Theatre, Holsworthy

HATS is an amateur theatrical society in Holsworthy, having their own 250-seat theatre and produce plays and pantomimes for the local community. Also the theatre is a venue for other entertainment:

Ghost Train -- Arnold Ridley's classic drama, comedy thriller
3rd – 5th July , 10th – 12th July @ 7.30pm

The Plough Arts Centre, Torrington

www.theploughartscentre.org.uk

Box Office: 01805 624624

The Plough Arts Centre based in Torrington provides an extensive, varied and interesting programme, including workshops – programmes and one-off days; live events – open air theatres and events at numerous locations around North Devon; theatre; comedy; films; music; and exhibitions and has its own Café & Bar “Charlie’s@The Plough”. The diary found on the web-site provides details of events, workshops, etc., programmed for each day. Many workshops are also programmed at The Plough @ St.Anne’s, Barnstaple. Selection of workshops/regular events in Torrington during March - May:

Saturdays, Ongoing – 19th July

PYT* Seniors (14-18yrs) with Sara Pruce from 10am
PYT* Middlies (11-14yrs) with Katherine Lockett from 11am
PYT* Infants (5-7yrs) with Sara Pruce from 12.30pm
PYT* Juniors with Katherine Lockett from 1pm
Creative Dance (8-16yrs) with Katherine Lockett from 3pm

Mondays, Ongoing – 14th July

Ploughcoppella with Rosa Robecka from 7.30pm
North Devon Community Choir

Tuesdays, Ongoing

Plough Prism Drama for Adults with Disabilities from 10am
Motion Dance for Adults with Disabilities from 1.15pm

Wednesdays, Ongoing – 17th July

Writing for Performance (8-18yrs) with Katherine Lockett from 5pm

OPEN AIR EVENTS:

Illyria present PRIDE & PREJUDICE	Hartland Abbey	17 th June @ 6.30pm
440 Theatre present ROMEO & JULIET	Holsworthy Badock Gardens	27 th June @ 6.30pm
PYT present TWELFTH NIGHT	Castle Hill 1646 Torrington	13 th July & 14 th July @ 7pm
Illyria present HMS PINAFORE	Hartland Abbey	22 nd July @ 6.30pm
THE MOST PERILOUS COMEDIE OF ELIZABETH I	Hartland Abbey	19 th August @ 6.30pm
The Plandits present THE SECRET GARDEN	Holsworthy Badock Gardens	19 th August @ 6.30pm
The Plandits present THE SECRET GARDEN	RHS Gardens Rosemoor	21 st August @ 3pm

More Open Air events in wider North Devon area listed on Events Diary on web-site

For films, music events, and NTLive screenings please go to web-site.

SUDOKU

By KrazyDad

Word Search

	8	2	1	3		5		4
	7	4				9		
		5		7		1	6	
				4				7
	4	7	9	6	8	2	3	
2				5				
	9	6		8		7		
		3				6	2	
7		1		9	6	3	4	

Difficulty: Easy

© 2018 KrazyDad.com

Fill in the blank squares so that each row, each column and each 3-by-3 block contain all of the digits 1 thru 9. Use logic and solve the puzzle without guesswork. For puzzle solving tips, and more puzzles, visit KrazyDad.com.

C T B J H D A B H S L U L S Y T J H G M
M E Q D N O Y M V V C Z B L I T V Z P V
U N H N O U R E D P T R I M D I B C W T
N T A Z C X N N Z Y I H I P V K N A K M
E V U L T Z X U B Y J I T Q C S U E O N
I I A R S U K P A I M K S A G I Q M T V
T D F S M I E M O W L S F I N C H E S W
K O L Y S W V C G T P L W K J C G U P T
W Z R D R A X U A A O W U O V Y W J U E
S T O R K E U C N P A O H B L E Y L C E
W O M P A D V K E T E D N K L L Q M O I
U U L Z Z P S O S F A N I J M U A Z D N
X C D W A M Y O L J Q B G Y N I B W B F
V A H E R O N S U P V T M U B D B G S C
P N X Y M G M A X W V O O S I H T L I K
J S A U Z K U F K W N F Z M Z N U K L B
O H K T U P T F W N S S H M F X S B I D
M E Q D N O Y M V V C Z B L I T V Z P V

Toucans Swallows Hornbill Finches
Cuckoos Plover Parrot Bulbul
Heron Stork Moa Potoo
Skuas Penguins Owls



COOL2Bkids

Dog fouling incidents on the rise in Torridge

Torridge District Council has reported that the number of complaints regarding dog fouling are up by 22 per cent in the last twelve months. The Council received 90 complaints in 2024/5 compared to 74 in 2023/4. Failure to pick up dog mess occurs district-wide and is a serious problem. Dog mess is an eyesore and poses a risk to human health as well as other dogs.

Under the Anti-Social Behaviour, Crime and Policing Act 2014, Torridge has a district-wide Public Space Protection Order (PSPO) in relation to dogs. It is an offence for a person in charge of a dog not to clear up immediately after their dog has fouled on public land. The PSPO covers land open to the air and to which the public are entitled or permitted access.

Torridge District Council's Neighbourhood Officers carry out regular patrols of the district and are authorised to issue Fixed Penalty Notices (FPNs) for offences such as dog fouling and littering. Fixed Penalty Notices, carry a fine of £100, and have been issued where irresponsible dog owners fail to pick up dog mess. Additionally, leaving bagged dog poo in a public place is a littering offence.

Fixed Penalty Notices can also be issued by an authorised officer where members of the public witness a fouling offence and are willing to provide a statement as well as attend court if required. Repeat offenders will be liable to a court prosecution and subject to a fine of up to £1000 if found guilty.

Staci Dorey, Head of Legal and Governance and Monitoring Officer, Torridge District Council, said:

"Whilst our Neighbourhood Officers report that the vast majority of dog owners they encounter are responsible and carry dog poo bags, it appears that a small minority of dog owners fail to pick up after their dog. This inconsiderate minority not only cause a substantial public nuisance but tarnish all other dog owners by their behaviour.

"Dog waste is not only unsightly and unpleasant, but it can also be harmful to people, animals and local environments. We would encourage anyone who witnesses a dog fouling offence, to report it to Torridge District Council at www.torridge.gov.uk/report."

THE NEWSLETTER GROUP and GENERAL DATA PROTECTION REGULATIONS

The Newsletter Group has reviewed the guidance on how we should comply with the new requirements which came into force in May 2018. We have compiled 3 documents:

- Milton Damerel Newsletter GDPR Statement Privacy Notice
- Milton Damerel Newsletter Data Protection Policy
- Milton Damerel Newsletter Data Protection Procedures

Which set out the data we collect about individuals and organisations, our policy in collecting data, and the procedures we follow to protect the data we hold. All of these documents are available on request.

In summary we hold personal data as openly published in the Newsletter and for the purposes of administration in liaising with our advertisers and subscribers to the Newsletter. Regular readers will note the level of detail included on Page 10, about celebratory occasions and residential 'comings and goings', has been amended to comply with our data protection statements, and most importantly to achieve good protection of personal data, minimising the risk of inappropriate use of the data.

If there are any concerns about the data we hold or publish please contact any member of the Group to request changes to the data. Group members and contact information is listed over the page.

If you would like to receive, or stop receiving, a digital copy of the Milton Damerel News Letter by email, please drop a line to the Compiler.

Disclaimer: The views and opinions expressed in any article are those of the authors and do not necessarily reflect the official policy or position of the Milton Damerel News Letter Team.

Advertisements

Conditions of acceptance. Orders for insertion of advertisements in this newsletter are subject to the approval of the members who may refuse or alter any copy. The newsletter and the members:- a) accept no liability for any loss or damage caused by an error or inaccuracy in the printing of any advertisement. b) Shall not be liable for any loss caused by the failure of the advertisement to appear on any particular day, in any specified position or page or by its failure to appear at all, and they reserve the right to refuse to continue its publication regardless of terms and conditions of any order or contract. Trades Descriptions Act 1968-All traders are reminded of the needs to ensure that goods offered for sale by advertisements comply with all relevant provisions of the above mentioned act.

RAW PIPER and SONS Est. 1975

Kerry Heights, Milton Damerel
Your local aggregate suppliers for
Top Soil, Sand, Stone, Dry Concrete Mix,
Cement
Plum Slate, Chippings (Including Coloured)
Terram

Small bags and Dumpy bags available
Collected or Delivered

Tel: 01409 261439



Wades

Furniture Beds
FURNITURE . FLOORING . BEDS

The Square, Bradworthy,
Holsworthy, Devon, EX22 7TD

Tel: 01409 241228

Email:

wadesofbradworthy@btconnect.com

Web:

www.wadesofbradworthy.com

Useful Contact details:

Parish Councillors:

Stephen Moyse (Chair) Tel. 07966 671543
 Richard Piper (Vice Chair) Tel. 01409 261114
 Jim Richardson Tel. 07866 406977
 Gareth Piper Tel. 07966 558385
 Teresa Walters Tel. 01409 261871
 Peter Bromley Tel. 01409 261838
 Edgar Pett Tel. 01409 261277
 Jane Elliott (Clerk) Tel. 07773679559

Chapel:

Rev'd Rob Blackhall Tel. 01805 628041
 Steward Jeremy Sharp Tel. 01409 261548.
 Property Steward (vacant)
 Secretary (vacant)

Church:

Rev'd Mark James Tel 04109 251015
 Church warden
 vacant

Parish Hall:

Booking Secretary Hayley Garner 07515770641
 or Melanie Richardson 07929 509534 .

Walks:

Gillian Aston Tel. 01409 254642
 email: holsworthywalkandtalk@gmail.com
 Evelyn Sharman Tel. 01409 259848
 email: evelyn.sharman@btinternet.com

Over 60's Club:

Chair: Linda Gifford
 Vice Chair: Margaret Walters
 Treasurer: Iris Tel. 261 322
 Vice Treasurer: Dora Reed
 Secretary: Colin Boucher

Holsworthy Rural Police:

Urgent 999
 Non-Urgent 101
 holsworthy@devonandcornwall.pnn.police.uk

Neighbourhood Watch:

Edwina Hale Tel. 261263
 Edgar Pett Tel. 261277
 Mike Jackson Tel. 261196

The Gardener's Group:

Melanie Richardson Tel. 261353
 Lesley Self Tel. 261294

Newsletter:

Chair

Vacant

Compiling & Adverts

David Taylor
 Tel. 261577
 email: hgawley@hotmail.com
 email: mdnld@hotmai.co.uk

Treasurer & Advertisers

John Binns
 email: mdnld@hotmai.co.uk

Regular contributors and features:

Rose Haynes
 Lesley Self
 Peter Bromley
 Mel Richardson

SUDOKU Answer

6	8	2	1	3	9	5	7	4
1	7	4	6	2	5	9	8	3
9	3	5	8	7	4	1	6	2
3	6	9	2	4	1	8	5	7
5	4	7	9	6	8	2	3	1
2	1	8	7	5	3	4	9	6
4	9	6	3	8	2	7	1	5
8	5	3	4	1	7	6	2	9
7	2	1	5	9	6	3	4	8



Chimney Sweeping
Reasonable Rates
Ring David Seggons
01409 241702

Now offering a new service
 Carpet cleaning, £2.50 per m/2

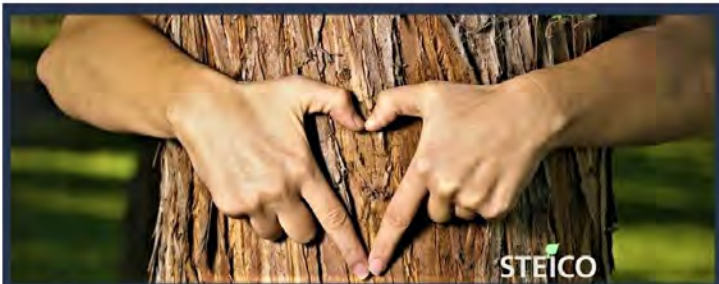
JO
07759705549

TURNING YOUR IDEAS INTO CAKE
BASED IN MILTON DAMEREL, HOLSWORTHY
5 STAR HYGIENE RATING
FIND ME ON FACEBOOK AND INSTAGRAM

MIKE
WYE

The Home Of
Sustainable Building

We supply our comprehensive range of traditional natural and sustainable building and decorating products to builders, conservation specialists and home owners throughout the UK



Lime Mortars & Plasters | Natural Insulation
Breathable Paints | Polished Plasters | Clay Plasters
Tools | Technical Advice

Tel: 01409 281644 | www.mikewye.co.uk | sales@mikewye.co.uk

Buckland Filleigh Sawmills, Shebbear, EX21 5RN



Keeping your home up to date

New Build - Extensions & Renovations
Conservatories & uPVC Products
Roofing & Rendering
Plastering & Stonework
Property Maintenance
Kitchens
Bespoke services & much more

Fully qualified and insured.

For a friendly, local and professional approach,
contact Paul for a no obligation quotation or advice.
Please see Facebook 'Paul Newman General
Builders' page for portfolio.'

01409 240331

07919 008161

paulnewman@sky.com



Contact your local Slimming World Consultant
and join a warm and friendly group today!

NEW VENUE

Bude

Bude Rugby Club

Wednesdays

5.30pm & 7.00pm

Holsworthy

Holsworthy Memorial Hall

Tuesdays

5.30pm & 7.00pm

Thursdays

9.00am & 10.30am

Essie 07816 686121

 slimmingworld.co.uk

Slimming
WORLD
touching hearts, changing lives

Humphrey Pullar Chimney Sweep
 NACS Registered & HETAS Approved
 Fully Insured
Professional Chimney Sweeping Service

- * Full Brush & Vacuum Service
- * Pots, Cows & Birdguards Fitted
- * All Types Of Appliances & Flues Swept & Serviced
- * Traditional & Powersweeping Techniques
- * Chimney CCTV Surveys
- * Bird Nests Removed
- * Smoke Testing

The Old Barn, Pancrasweek, Holsworthy, Devon, EX22 7JN
 Tel: 01409 240138 Email: humphreysweep@mac.com

 **GEORGE PRESTON**
Plumbing and Heating Engineer
 Gasafe Registered
 Nat Gas and L.P.G.

Boiler Upgrades, Installs and Servicing
 Central Heating and Solar
 Landlord/ Commercial Gas Safety
 Certificates

All plumbing works
 from dripping taps to complete
 bathroom installs/makeovers

TEL 01409 261442 MOB 07958901777
 Contact e-mail
george.aph@googlemail.com

 **RUBYVIEW FOOTCARE** 

Would you like help with ...

- Overgrown Toenails
- Athletes Foot
- Hard/Dry Skin
- Fungal Nail Infections
- Cracked Heels
- Diabetic Footcare
- Corns

Treatment in the comfort of your own home.

 07570 329199
 rubyviewfootcare@gmail.com
 Rubyview Footcare

"Do you need Driving Lessons?"
 Whether you are a complete beginner,
 Partly Trained or a
 Qualified Driver in need of a refresher

Contact **EVELYN SHARMAN**
 For Professional Driving Tuition (DVSA, ADI)

Tel. 01409 259 848 Mobile. 07885 352 082
 Email. evelyn.sharman@btinternet.com
www.evelynsharman.co.uk

 **T 01409 253533**

9 Tamar Business Units
 Holsworthy Industrial Estate
 Holsworthy, Devon, EX22 6HL
www.renew-sw.co.uk

**QUALITY WINDOWS, DOORS,
 CONSERVATORIES,
 SOLAR PV & ROOFLINE**


 Your Local Home Improvement Specialists

ATLANTA FIRST AID TRAINING

Courses Offered:
 First Aid at Work.
 Emergency First Aid at Work.
 Paediatric First Aid.
 Paediatric Emergency First Aid.
 Annual refresher courses.



All courses are certificated and OFQUAL regulated.
 Fully qualified Tutor.
 Can be conducted at your place of work.

Further information please contact:
 Lorraine Buttery Tel: 01409 282956
 email: atlantafaaw@gmail.com