

SPRING 2022

MILTON DAMEREL

PARISH NEWSLETTER

86th EDITION

Congratulations to
Her Majesty
Queen Elizabeth II
On her
Platinum Jubilee
Year

1952-2022



Royal Collection Trust/ © Her Majesty Queen Elizabeth II 2022

Colourful stems and bark

At this time of year it can be difficult to maintain interest in the garden, but one easy way is to introduce shrubs with colourful stems and trees with ornamental bark.

For colourful stems plant *Cornus* and *Salix*. The fiery colours of *Cornus* are a delight; from bright red *C. alba* 'Sibirica' AGM to orange *C. sanguinea* 'Winter Beauty'. *Salix alba* 'Golden Ness' AGM produces lovely golden yellow stems shining in the low winter sun. Plant in groups, if you have the room, to make a bold statement and they will not fail to lift the spirits in the gloom of winter. For best results, plant in full sun or partial shade and prune in March (less vigorous varieties such as 'Winter Beauty' should be done less frequently).



© RHS

These shrubs lend themselves to be under planted with snowdrops, the pure white flowers contrasting beautifully with the vivid stems. Next to Rosemoor Lake, we have a wonderful display of *Galanthus* 'Atkinsii' AGM planted amongst the crimson stems of *C. alba* 'Sibirica'. This is one of the earliest snowdrops and one of the most vigorous, ideal for naturalising.

Birches are known for their ornamental bark and the gleaming white bark of *Betula utilis* var. *jacquemontii* (the Himalayan birch) shines through the winter gloom, especially when it has been cleaned with a soft brush and water to remove the previous year's accumulation of algae. This birch looks particularly effective when planted in a small group (Winter Garden), or if grown as a multi-stemmed specimen (Rock Gully).



© RHS



© RHS

The aptly named paper bark maple with peeling bark (*Acer griseum* AGM) and the beautiful snake bark maple *Acer davidii* VIPER 'Mindavi' can also be found in the Winter Garden. *Acer* 'White Tigress' in the Foliage Garden is a particularly beautiful specimen. Birches with pink bark can all be found here. Everyone is familiar with white birches but those with pink stems such as *Betula albosinensis* 'K. Ashburner' (Rock Gully) are especially striking.

The smooth, young coppery-brown bark of *Prunus serrula* is wonderfully tactile, so plant in a position where you can reach it and where the sun can catch the reflective bark and shine through the peeling ribbons of bark.



© RHS

All of these trees look wonderful in groups and under-planted with spring bulbs such as *Narcissus*, *Chionodoxa*, and of course, snowdrops. Early flowerers such as hellebores also look stunning. So, if you are thinking of planting more trees or shrubs this year, then consider the winter and early spring interest they can create in your garden.

Sheila Dearing RHS Garden Rosemoor

CONTENTS

Parish Council	4
Chapel News	6
Congratulations	9
Church News.....	10
Holsworthy Walk and Talk	13
Bradworthy Primary.....	14/15
Rural Policing Update	16
Gardening Group	17
Parish Hall	19
Evelyn's Walk's	20/24
Footpaths Update	21
Over 60's Club	21
Neighbourhood Watch	24
What's On	27
Regular Event's	28
Useful Contact Details	30

Wades

OF BRADWORTHY

FURNITURE . FLOORING . BEDS

The Square, Bradworthy,
Holsworthy, Devon, EX22 7TD

Tel: 01409 241228

Email:

wadesofbradworthy@btconnect.com

Web:

www.wadesofbradworthy.com

DIAMOND
THE CUTTING EDGE IN

**PROFESSIONAL
CARPET, CURTAIN
& UPHOLSTERY CLEANING**

Domestic & Commercial

- Deep Hot Water Extraction Cleaning
 - Deodorising Treatments
 - Dust Mite Removal
 - Leather Cleaning
 - Stain Protection
 - Stain Removal
- Other treatment
also available

OUR PRICES ARE HARDER THAN A
DIAMOND TO BEAT

Call us now for a
FREE ESTIMATE

**Call Mike on Holsworthy
01409 254816 or 07855 275088**

Parish Clerk: Lorraine Buttery 3 Sunset Heights, Shebbear, BEAWORTHY, Devon, EX21 5BN

E-mail: miltondamerelpc@hotmail.co.uk

Tel: 01409 282956

Councillors:

Stephen Moyse (Chairperson)	01409 261151	Richard Piper (Vice Chairperson)	01409 261114
Rose Haynes	01409 261577	Jim Richardson	07866 406977
Gareth Piper	07966 558385	Peter Buckpitt	07584 086693
Teresa Walters	01409 261871		

Meetings of the Parish Council are usually held on the third Wednesday of each month. The agendas for all meetings are displayed on the notice boards and available on the Milton Damerel Website, no later than the Thursday before the meeting. The draft minutes are posted to the website within 30 days, but are not officially approved until the next meeting. Members of the public and press are always welcome, time is set aside for comments but they may not take part in discussions at any other time.

COVID 19

Most restrictions have now been lifted but the Government still urges people to be cautious as the disease has not gone away, Torridge had one of the highest rates in England. The wearing of face masks is not compulsory but some shops are requesting that shoppers wear one when inside their supermarkets. It is also a personal choice whether to wear one or not.

District Councillors

Our District Councillor Ken James attended our December and January Meeting, his reports have been printed within the Minutes of the Parish Council meeting. Councillor Kit Hepple attended the meeting in February. Although not always available to attend meetings regular updates are also received by email, both Councillors work in the background to support the Parish, they can be contacted anytime by all, for any help or advice that might be needed. Details of how to contact them are in the Parish Website.

Devon County Councillor James Morrish

Councillor James Morrish has been unable to attend recent meetings due to pressure of work. James has 'several hats' within Devon County Council, and works extremely hard on behalf of all the residents he represents. He can be contacted by email for any help or advice you might need.

PFCSO Mark James has been unable to attend any meetings so far this year due to his workload, but he sends regular updates by email to the Parish Council, these reports are posted to the website.

Planning matters:

There have not been any new planning applications over the last three months, but an updated application regarding the Solar Park at Bulkworthy was been received. Your Parish Councillors give great consideration to all applications received, their concerns and comments are reported in the minutes and passed on to Torridge planning department.

Although the application for the development at Town Farm has been approved for some time, there are no signs of any development starting.

Details for all planning applications are available on Torridge District Council website; applications to be considered by the Parish Council are stated on the Agenda for Parish Council Meetings. If residents have any objections or concerns regarding an application, they can convey them in writing either by post or email to Torridge District Council planning department, you can also inform any Councillor or the Parish clerk. As there is now a strict 21-day consultation period it is imperative that you get your comments to the relevant department as soon possible.

Parish Newsletter:

Unfortunately, the planned meeting on the 16th December had to be cancelled. After advertising for help in the newsletter last quarter it is of great news to all, that 6 residents put their names forward to help. A meeting was held with them on the 4th February, the newsletter committee are grateful to any resident that can offer their help. It is hoped that the future of the newsletter is now more secure.

The Step Back in Time Fund:

For young people has a balance of £103.02 Grants can be made from this fund to help young people of the Parish undertake special activities, such as volunteering at an event at home or overseas. Applications in writing can be sent at any time to the Parish Council via the Parish Clerk, outlining the project for which the grant is requested.

Annual Grants

Grant applications for the financial year 2022-2023 from Milton Damerel Gardening Club, MD Parish Hall, MD Newsletter and MD Parish Church were considered at the Parish Council meeting held on the 17th November, details will be in the minutes of the meeting and applicants will be notified by letter. Cheques for successful applicants will be distributed in September 2022.

Community Defibrillator (AED):

The AED's sited at Holsworthy Beacon and Sanders Garage are checked regularly, but if at any time you see that there is any damage to the cabinet at either site, please inform the Clerk.

If you would like a refresher on the use of the AED and basic life support (CPR), please let the Parish Clerk know, these are conducted free of charge.

Website

If you have any events that you want advertised, please let me know or email to me in pdf format, the website Cannot be kept up-to-date if I do not get the relevant information.

Condition of the Roads in and around Milton Damerel:

The Parish Council receive numerous complaints regarding the poor state of the roads, the Parish Clerk regularly passes on the complaints to Devon Highways, copies are always sent to Councillor Morrish, who will substantiate our complaints. The more people that go onto Devon County Council's website and reports potholes and poor road surfaces the better, the Parish Council encourages residents to do so as often as they can. <https://www.devon.gov.uk/>

Parish Footpaths

The Parish Footpaths have been looked after by Michael Jackson for ten years, he will be retiring in the New Year and is looking for one or two persons to take over, it is hoped that this has been achieved, Further information should be available in the coming months.

HM Queen Elizabeth II Platinum Jubilee celebrations will be held in June, details of a special meeting to be held in the Parish Hall in March will be published shortly. All residents are encouraged to attend.

Freedom of information: Requests for information under the Freedom of Information Act should be sent to the Parish Clerk. Some information can be made available by email free of charge, paper copies will be charged at 10p per A4 side. Copies of the recent Parish Council meeting agendas and minutes are available on www.miltondamerel.com

70 Glorious Years.

On the 6th February 1952, on the sudden death of her father, King George VI, Princess Elizabeth became Queen Elizabeth II, at the time she was only 25 and was on a long planned international tour, which she and Prince Philip had undertaken on behalf of the King owing to his ill health.

Her Father was crowned King after the abdication of his brother Edward VIII who wanted to marry divorcee Wallis Simpson. Princess Elizabeth was relaxing at a game viewing lodge in Kenya before continuing on with the tour to Australia & New Zealand, when the news was broken to her by her husband Prince Philip and arrangements were made for them to fly home immediately. Martin Charteris her private secretary asked her to choose a regnal name, she chose to remain Elizabeth thus becoming Queen Elizabeth II.

The Coronation took place the following year on 2nd June 1953 and was the first Coronation to be televised, an idea of Prince Philip's that allowed the general public to see the ceremony for the first time, a privilege in the past, reserved for Royalty and Dignitaries from around the globe.

The Queen is known to have been particularly close to her father probably inheriting her work ethic of putting duty before self, from him. and has been a beacon of continuity through an unprecedented period of change, adapting and modernising the Royal Family with the times. Perhaps one of her greatest achievements is her ability to remain relevant and popular, loved by most despite some of the most tumultuous years in modern royal history.

She has met every President since Harry Truman, except Lyndon B Johnson, and has welcomed 14 new British Prime Ministers to Buckingham Palace.

Being our Queen for 70 years she is the longest reigning British monarch and the first to celebrate a Platinum Jubilee, the next longest being Queen Victoria's reign of nearly 64 years.

She is also famous for her love of animals, is dedicated to her dogs but horses hold a special place in her heart, she has ridden from the age of 4 having been given a Shetland pony, Peggy, by her Grandfather George V, she has only recently had to give up riding due to discomfort. At 95 the Queen has had to hand some of her duties over to other members of the Royal Family but she will no doubt enjoy the special celebrations planned for her Platinum Jubilee.

Chapel News – March 2022

Dear Friends

Are you ready for pancakes? I know I am. For a variety of reasons, I missed out last year.

Of course, the onset of Shrove Tuesday means that Ash Wednesday and Lent are also upon us. (Shrove Tuesday is 1st March and Ash Wednesday the following day)

Lent is a time for reflection and preparation as we observe Christ's journey towards Jerusalem and the cross.

Traditionally it is a time to think about what it means to be human in the light of this journey of Jesus, asking us questions about attitudes and how we want to live our lives. That of course is very serious; although it is good to take out time to consider these things.

The forty days of Lent mirror the time Jesus spent in the wilderness – fasting, we are told, and no doubt, much praying too. 40 days without food is a harsh regime. I have known others take a day a week to fast; although one should take into consideration your own physical well-being.

Fasting is of course part of the tradition of giving up things for Lent, although, I believe taking some thing on is good too.

With that in mind I found the words of Pope Francis helpful:

Do you want to fast this Lent?

Fast from hurting words and say kind words.

Fast from sadness and be filled with gratitude.

Fast from anger and be filled with patience.

Fast from pessimism and be filled with hope.

Fast from worries and trust in God.

Fast from complaints and contemplate simplicity.

Fast from pressures and be prayerful.

Fast from bitterness and fill your heart with joy.

Fast from selfishness and be compassionate to others.

Fast from grudges and be reconciled.

Fast from words and be silent so you can listen.

To which, I am sure, we can all add - Amen

Blessings to you all on your journey towards Easter.

Rob Blackhall

Superintendent of the Torridge Methodist Circuit.

Action for Children – The donations received at our 2 Christmas services totalled £145.20. Thank you everyone for your support.

Quinquennial Inspection – Our premises were subjected to the 5-yearly review in the Autumn and we are pleased the report was satisfactory generally, with a few areas for attention, the most immediate being a safety requirement to firm up some loose headstones, which will need to be done in consultation with family members, if still possible. Other matters would be considered normal repairs and maintenance, one of which being the replacement of the lobby ceiling following water ingress, and has been completed through an insurance claim.

Circuit Discussions on Future – In common with many churches, of all denominations, the direction for the way ahead has been brought into greater focus, and accelerated, as a result of the impact of Covid-19 pandemic. Proposals for the configuration of the Circuit, the Churches and Church Councils, have been developed for discussions at the Spring Church Councils and Circuit meeting in March, looking towards adopting changes from September 2022. Progress on adopting the proposals and moving forward with the changes will be reported in future Newsletters.

Flower Plan:

13 th March	10 th April	15 th May
Mrs Margaret Fishleigh	Mrs Grace Millman	Mrs Ann Poole

Dates of services at the Chapel, for March, April & May, all at 11.00am.

Sunday, 13th March All Age Worship, including Holy Communion and Sunday School

Preacher: Revd Rob Blackhall

Sunday, 10th April All Age Worship, including Sunday School

Preacher: Mrs Nancy Hall-Tomkin

Sunday, 15th May All Age Worship & Christening, including Sunday School

Preacher: Revd Lynne Burgon

(please note this is the 3rd Sunday)

Services Elsewhere in the Circuit:

Friday, 4th March at Torrington Methodist at 2pm World Day of Prayer. Theme: 'I know the plans I have for you'

Sunday, 27th March at Torrington Methodist Church at 10.30am Circuit Service for

Visit of President of Methodist Conference, Revd Sonia Hicks

Easter Sunday, 17th April at Langtree at 11am Holy Communion Preacher: Mr David Ley

Zoom Services for the Circuit at 6.30pm each Sunday, all are welcome to join in. The service can be accessed via a computer/laptop with camera/microphone, iPad/phone or using the normal phone – even if you have a device with camera/microphone and do not wish to be seen, you can join in without the camera on – please contact Sarah Richards, our Circuit Administrator, on 01237 472649 or email her sarahrichards185@gmail.com for details on how to join the 'meeting'.

Torridge Methodist Circuit Newsletter - Our monthly Torridge Methodist Circuit Newsletter includes outlines of weekly services for readers to use on its own or with the Zoom service. If you would like to receive this monthly Newsletter please let us know. The Newsletter is also available on line at www.torridgemethodistcircuit.org.uk and there is also a Facebook page for the Circuit. There is also a private Facebook Group, where we share thoughts, prayers and other material – this is Torridge Methodist Circuit Group – if you wish to join please go to this Facebook page and use the Join button. Details of other Circuit Zoom events are also shown on the Facebook page – bible studies, online coffee mornings, other celebration occasions– again please contact Sarah Richards for details for Zoom access.

The Chapel & Covid-19 - The Toddler Group have been meeting regularly on Tuesday mornings, and, a service with All-age Worship, which includes Sunday School, has been occurring on 2nd Sunday of each month. The risk assessment remains in place and we will continue to follow and amend guidance as needed, - providing adequate ventilation, hand sanitisation or hand washing on arrival and departure, asking people who have Covid-19 symptoms or are unwell to stay away, and continue to encourage the wearing of face masks and social distancing

CONTACTS – For further information or help please contact: Our Minister: Superintendent Minister: Revd Rob Blackhall (01805 628041) Our stewards: Dan Brett (Tel: 261609) & Jeremy Sharp (Tel: 261548), Property Steward: vacant; Secretary: vacant

Looking Back

A few snippets from Looking Back published in The Holsworthy Post:

100 years ago, 11th February 1922

“A Bill presented by the Home Secretary on Wednesday provides that Summer Time shall be made permanent”. published on 2nd February 2022

80 years ago, 31st January 1942

“Lost at sea CPO George Glover RN of Milton Damerel”. published on 27th January 2022

70 years ago, 2nd February 1952

“Parishioners heard with regret of the death of the Rev. C.D. Jenkins (Rector of Milton Damerel)”. published on 2nd February 2022

50 years ago, 12th February 1972

“One of Milton Damerel’s oldest women residents, Mrs B Johns of Venn Green, celebrated her 85th birthday recently. She is still able to walk half-a-mile two or three times a week to help a neighbour with her cooking and washing”. published on 9th February 2022

Rev C.D. Jenkins resided at The Old Rectory, the first old rectory in the parish, now known as Milton House.

Mrs B. Johns lived at East View, Venn Green, and for many years the Post Office was located at this residence. Enquiries of some long term residents in the Parish has not identified ‘the neighbour’ she helped. Senior moments prevail!!

Spring is on the way.

At last Spring is on its way, the Snowdrops and Crocus are flowering and the Daffodils have their spear like heads appearing, it won’t be long before Winter will be a memory and we will be looking forward to those long hot days of Summer.

It won’t be long before we’ll be seeing new life in the fields, we’re coming up to lambing season and soon the cattle will be turned out some with young calves.

Quite often now we hear of dogs running free and chasing sheep, even the smallest dog is a “domesticated wolf”, very often it’s obedient and comes back when you call it but if it’s not been brought up and trained too not chase livestock that “domesticated wolf” will possibly take off after a sheep or lamb and completely ignore you when you call it, if the sheep is a pregnant ewe she could abort her lambs or the stress could kill her, worse your pet could attack and cause serious injury or worse kill.

Another danger a lot of folk don’t think of is the risk walking your dog through a field where cows and their calves have been turned out, the best advice would be not to risk it but if you must keep as far away from the cattle as you can, if things get difficult and they become curious or threatening drop the dogs lead and make as quick an exit as possible.

Hopefully whilst enjoying the countryside with your canine friend you’ll have some plastic bags to hand to pick up any deposits your dog may leave behind and you’ll take these home with you and dispose of properly, plastic bags can choke a calf or lamb if they get hold of them.

There is growing evidence of the links between two specific diseases in livestock and the presence on grazing land of faeces from infected dogs. The two diseases are:

- Neosporosis – which can cause abortions in cattle, if a cow is infected with Neosporosis she will probably lose the calf she is carrying and also her life as there is no cure she will carry the disease for life so will need to be culled.
- Sarcocystosis – which can cause neurological disease and death in sheep In many cases, infected livestock show no symptoms, but the disease is more likely to manifest if there is a high level of infection in the environment which could occur in a field used heavily for dog walking. Even when symptoms have not been present, the presence of sarcocysts on a carcass following slaughter can result in the carcass being condemned and loss of income to the farmer.

Most residents of Milton Damerel and the surrounding area know these things but every year we put something in the Newsletter, people move into the area and some move from towns and cities and don’t know country ways, everyone is entitled to enjoy the countryside in a sensible way, there is only one way to keep your dog under control if it’s not use to livestock is keep it on a lead if walking through a field with livestock in or near.

Simnel cake cupcakes

Preparation time less than 30 mins
Cooking time 30 mins to 1 hour
Serves Makes about 12

Ingredients

about 450g/1lb marzipan	275g/9¾oz caster sugar
150ml/5fl oz sunflower oil	50g/1¾oz honey
1 tsp vanilla extract	75g/2½oz full-fat cream cheese
4 medium free-range eggs	150g/5½oz currants
75g/2½oz raisins	200g/7oz plain flour
2 tsp baking powder	2 tsp mixed spice
icing sugar, for rolling	edible gold balls, to decorate

Method

Place 12 paper muffin cases in the pockets of a muffin tray, and preheat the oven to 180C/350F/Gas 4. Roll the marzipan out to about 3mm/¼in thick and cut two sets of discs, a dozen of each: one measuring about 5cm/2in in diameter and the other about 6cm/2½in. Stack these on a plate while you make the cake mixture. Beat the sugar, oil, honey, vanilla and cream cheese in a mixing bowl until smooth, then beat in the eggs until thoroughly mixed through. Stir in the currants and raisins, then sift in the flour, baking powder and mixed spice and stir well. Spoon about 1-2cm/½-¾in of cake mixture into each paper-lined pocket, lay one of the small marzipan disks on it and press it down gently to remove any air pockets, then spoon more of the mixture on top to three-quarter fill the papers. Bake for about 25-30 minutes, or until a skewer poked in comes out almost clean. When the cakes are out of the oven, place a disc of marzipan on each and very gently press it down and around: the heat from the cupcake will soften the marzipan and seal it on. Then press eleven gold balls around the edge of the marzipan on each cake and leave to cool.



Chocolate Easter egg nest cakes

Preparation time less than 30 mins
Cooking time less than 10 mins
Serves Makes 12

Brilliant to make with children over the holidays, these easy chocolate Easter nests are a perennial favourite.

Ingredients

225g/8oz plain chocolate, broken into pieces
2 tbsp golden syrup
50g/2oz butter
75g/2¾oz cornflakes
36 mini chocolate eggs

Method

Line a 12-hole fairy cake tin with paper cases. Melt the chocolate, golden syrup and butter in a bowl set over a saucepan of gently simmering water (do not let the base of the bowl touch the water). Stir the mixture until smooth. Remove the bowl from the heat and gently stir in the cornflakes until all of the cereal is coated in the chocolate. Divide the mixture between the paper cases and press 3 chocolate eggs into the centre of each nest. Chill in the fridge for 1 hour, or until completely set.



Furniture - China - Glass
Decorating Materials - Hardware

Martin & Co

M. Wellington - J. Wellington

Telephone - 01409 241216

Email - martinsbradworthy@gmail.com

The Square, Bradworthy, Devon, EX22 7TB

FRAZER

GARDEN SERVICES



HAND & RIDE ON MOWING
STRIMMING
HEDGE CUTTING
GENERAL GROUND MAINTENANCE

07931711371

CONGRATULATIONS!



To: Christine Poole of The Willows, Venn Green and Christine Buckpitt of Moor View Farm, Derworthy Lane, both celebrate their 60th Birthday in April.

Ron Gifford of Whitebear Farm who celebrated his 90th in February.

Roy Palmer of Strawberry Bank celebrated his 80th Birthday in February.

To: John and Anne Binns on their first Grandchild, Alfred Lee Mansell, congratulations to happy parents Joanne and Tim..



OUR SYMPATHIES

To those who have been bereaved recently:

Pam Pidgeon and son Darren of The Barn, Youldon, on the loss of husband Chris.

Myra Sexton and daughters Charlotte, Karen and Nick formerly of Milton House, on the loss of Ian, who passed away peacefully on January 23rd after a long illness.

Katie Allin and family at Rubyview, on the loss of Grandmother Phoebe Overy, aged 94 years.

Apologies, in the last issue we said Edwina Hale lived at Distant Heights, which should have been Distant Point.



We are sorry if we miss any occasions for this page – our coverage is only as up-to-date as YOU provide information to us. see page 30 for contact details. Thank you ***

Natures Nattering's – Roe Deer

You're So Deer!

The Roe deer (scientific name *Capreolus capreolus*) This type of deer can be found hoofing around various parts of the UK on grassland, heathland, farmlands wetlands and woodlands and are one of two of our truly indigenous species...(The other being Red deer).

Nimble, majestic and graceful they are the size of a leggy sheep, they will bark when alarmed or startled. As the seasons change, so do the colour of their coats summer sees them donning a lovely reddish/golden brown with the winter time showing a hue of grey/dark grey.

On the menu –

These guys will trough practically anything! They will browse on the leaves and buds of deciduous trees, grasses, ferns, brambles, herbs, ivy, rose, I also found out (the hard way!) they absolutely LOVE my runner beans! They will often dine together in groups especially in the winter but are also happy to be alone for a time too.

The mating season (rut) is in July and August where notable squeaks can be heard coming from the females (doe) as she calls for a bit of attention from the male (buck). If a doe isn't ready to mate, the buck will chase her making grunting like noises, often going around in circles.

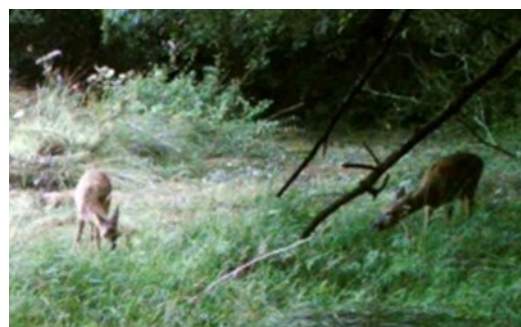
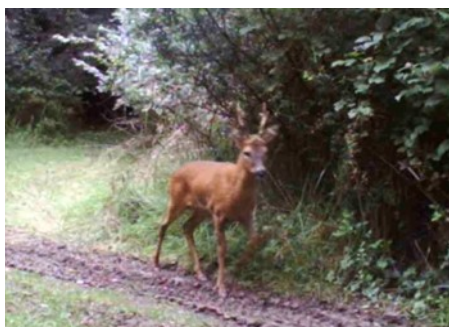
Tell Tails:-

Well, I say tails, but, in actual fact the Roe don't have any tails! However, the female has a small stump on her white rump and a great way of telling from behind if the deer is male or female is a closer examination of their butts! The doe will have the shape bearing an upside down heart and the buck will be more oval in shape and remember, no stump on the rump for the chaps...

Deer Kids...

An amazing attribute of the Roe deer is the female reproductive system, despite the rut being in the summer, they won't implant the egg until January, this way avoiding their kids being born in the colder months, the gestation period is 9.5 months in total. The doe will have between 1 – 3 kids/fawns and they will stay with the mother for appx 12 months. A buck will start to grow his antlers as young as 4 months old and the speed of progression depends on the quality of food they have available to them.

I look forward to bringing you some more gossip next time, Lots of love from All at Natures Rest. Tracey Slocombe



Holy Trinity Church News

Rev Richard Freeman Tel 01409 241315

Church wardens Isabel and Roy Fairbrother tel 01409 261181

Email: holytrinitychurch1274c@gmail.com



Hello Everyone

We hope that you and your families have been keeping well through these winter months, thankfully we can now look forward to Spring and warmer weather. Did you notice how early the Daffodils were out this year? The first that we saw open was at Landcross on the corner of the Holsworthy junction in late December. They raised our spirits as we know better things are coming.

Christmas was a difficult time; we had already cancelled the Christmas Tree Festival through lack of support then the question was do we hold a Carol Service in the light of the poor attendance at the Harvest Festival? With the other churches in our Benefice dates were worked out but ours clashed with the chapel so we changed it then it clashed again with the Parish Hall, so many carol services all on the same weekend, my head was spinning with it so it was agreed to cancel before we accrued expenses for the food and mulled wine. It was not an easy decision to make as Christmas is foremost a religious celebration of the birth of Jesus Christ we sing carols in church to celebrate his arrival amongst us, it is one of the most important events in Christian year.

The gifts we exchange at Christmas are derived from the gift given to us all – Jesus. It is a breakdown in community communications -which we had enjoyed together over the years. Covid has made social activity in the past year more difficult. At our church we rely heavily on the extra income of these special services to pay the bills, it has made it much more difficult to keep afloat. Thankfully things are getting back to normal and we hope to see people supporting the church events again. **We need your support - our church IS open to everyone.**

During the months of closure we have had generous donations given to the church roof fund for which we thank each and every one of you, each £ is a step nearer to that new roof

Urgent repair work had to be done on the tower parapet late last year which cost £2500 we obtained a grant for £1000 with the rest being taken from the roof fund. The balance stands at £10,837 now.

The tower still needs work but it has been decided the south nave roof and downwater goods are in need of the most urgent repair. The slates on this area of the roof are always moving and falling because the nails have rotted as has the wood. It is thanks entirely to Scott's efforts at putting slates back into place that we haven't got major holes in the roof letting in water - therefore it makes sense to concentrate on this area first. It is hoped we will be more successful at getting repairs done.

Collection of plastic bottle tops and empty printer ink cartridges is now being resumed.

Mrs Edwina Hale informed us that she will be collecting the plastic bottle tops and empty ink cartridges to take to the recycling company again to raise money for Holy Trinity roof.

Please leave in the church porch for collection.

All money gained from these bottle tops goes into the church roof fund.

Pre-Mother's Day celebration - Saturday 26th March from 2.30pm – 4.30pm Diary Date

Mother's Day a very special occasion - every human being has a mother.



So this year we are celebrating all mothers.

Join us to enjoy a social afternoon with a cream tea and cake, a raffle with a chance to win a nice prize for yourself.

We are so looking forward to seeing everyone.

Pre-Father's Day BBQ - Saturday June 18th 2.30pm – 5.30pm Diary Date

Father's Day - treat your family to a visit to the church BBQ.

Plenty of food consisting of Burgers, Sausages, Chicken drums, potatoes, salad and more.

And a dessert. Vegetarian catered for-

Everything for a super treat for Dads. **Mark it on your calendar now.**



Church services are held twice a month

Church Service dates from March 2022 Diary dates

March 13 th	Holy Communion	11.30am
March 27 th	Morning Service	10.00am
April 10 th	Holy Communion	11.30am
April 24 th	Morning Service	10.00am
May 8 th	Holy Communion	11.30am
May 22 nd	Morning Service	10.00am
June 12 th	Holy Communion	11.30am

Church Gardening - everyone is welcome to come and help keep the churchyard tidy

In the past few months it has been difficult to work outdoors, I don't need to remind you of the inclement weather we have all endured, but though we don't like being soaked in the rain we can wrap up against the cold, it doesn't deter people from turning out for a bit of church yard tidying through the winter months. These are people who keep the churchyard looking clean and tidy – a tranquil place for all members of the community and visitors to our parish to enjoy. It is looking nice at the moment as it is edged with the white of the snowdrops, such a brave little flower.

We will soon be into spring and early summer and that means starting up the grass cutting, strimming (bring your own strimmer), weeding and all the other jobs around the church so if you fancy a little gentle exercise then do come and join us – as much or as little as you want to do.
From 2pm – 6pm in British Summertime

Summer Gardening dates from April 2.00pm - subject to the weather:

March 10th at 1.00pm April 7th and 28th May 5th and 19th June 9th and 23rd
(Clock's go forward on Saturday March 26th.)

Take Care

Jsabel and **Roy**
Church Wardens

Holy Trinity Church, Milton Damerel
COME to celebrate early at our

Mother's Day

AFTERNOON

CREAM TEA

Saturday
26th March

2.30pm to
4.30pm



ALL WELCOME

Donations to Church Funds

Holy Trinity Church
Milton Damerel
Annual Church

BBQ

Saturday June 18th
Open 2.30 - 5.30pm

Everyone is WELCOME
Proceeds to Church Funds



Bradworthy Primary Academy

Bradworthy's Brilliant Gym Victory!

Bradworthy were victorious - they grabbed national final tickets for the Gymnastic Nationals after a fantastic first round in the South West Regionals.

The brilliant boys grabbed Gold, the Marvelous Mixed Team took Silver and our Grand Girls clenched bronze !!!

Tension built as the team floor competition approached. Blake, Baxter and Jaden walked onto the mats. 3,2,1 beep ...

It was a fantastic performance; they moved to the music and elegantly fought their way to a gold medal with only one small mistake. They are now delighted with their performance and are really looking forward to the nationals in Stoke next month.

Time for the mixed team. After the boys magical performance what would the mixed team do?

May, Isabel, Olivia and Arthur entered - 3,2,1 go ... We began - May and Olivia did a fantastic round off. Arthur and Isabel improved on their cart wheels and bridges. Silver for the mixed Team after another great performance! And, another team on its way to the nationals !!

There was an individual competition too:

Baxter the Banged Up!

It was Vault time and Brilliant Baxter's turn - off he went it was a fantastic run he hit the board **BANG!**

He hit the vault with such force he almost knocked it over, "OOOHHH" cried the crowd. It was a disastrous hit but Baxter bravely walked back to have another go. His next vault was brilliant, so good that he finished in Silver Medal position at the end of the competition.

There was even more success on a very successful day for our school when Arthur got an individual bronze medal.

It was a great day and we enjoyed all of it. I can't wait for the next round at the nationals in Stoke-on-Trent.

We're really glad we made it through, I am pleased about the results and looking forward to competing against the best schools in Britain.



Outstanding Second place for Bradworthy School !!!

Bradworthy Primary Academy came in second place in the amazing Torrington netball league !! We were only just behind Langtree who finished in first place after four games. "It was probably one of the greatest netball performances yet!" said Will in Year Six.

A victorious 3 out of 4 wins for Bradworthy Academy with the only loss against Langtree! The team learnt a lot during the days competing and will take the valuable lessons onto their next competition at Torrington school. We're determined to win.

The Fantastical First Match!

The first match was a Magnificent win against Blue Coat school. The score was 30 to Bradworthy and we ended up coming home with our first netball win of the season. There was excellent defending by Jake and William, amazing pace from Amelia and Sophie and sensational scoring by Sophie and Cerys. Sophie (Year Six netball player) said that "It was an amazing first win and I can't wait for the next match!"

It was a brilliant first match and a sensational start to the league.

The Drastic Second Match.

For the first time Bradworthy Primary Academy suffered a loss. This game was against the almighty Langtree, who won the whole competition. It was a drastic disaster with the score being 8 - 2 to Langtree. The team played the hardest they could but it just wasn't enough to beat Langtree. There was still some outstanding defense by Sophie and Sophie, extraordinary passing by William, Jake and Lydia and a couple of good goals by Cerys and Gorge. Sophie was captain of the team that did their best.

Jake - a year six netball player exclaims that "It was a drastic disaster but we can definitely win the next matches!"

The Third and Fourth Match

The third and fourth match were on the same day and apart from teams, the matches were pretty much the same. We had the same positions and pretty much the same scores. Bradworthy won both matches against St. Mary's and Monkleigh. There was fantastic defending by Gorge and Amillia, more great passing by Sophie and Isabel and "out of this world" goals from Sophie, Cerys, Jake and William.

Cerys and William were captains and gave us two victory's. The scores were 7-4 and 8-3 both to Bradworthy.

It was a brilliant league for Bradworthy with 3 wins and we think that there's a good future for the netball team. There's a tournament coming up soon so we'll find out.

By Cerys and Sophie (Year Six)



COLD, BUT GOLD, CROSS COUNTRY RUNNING !!!

As magnificent May crossed the finish line, we all cheered! She was placed 12th and Huffing and puffing with cold air! Tired, she was very tired.

Not long after Loopy Lacey ran through at burning speed, using all her energy, crashing through the finish line. She was never usually tired, but now she was. She was Lying on the wet, muddy grass. Gasping for air!

After her we've got spectacular Sophie, speeding through the line.

Falling dramatically on the floor. Needing to get her breath back!

Our girls' team is in third place and we're really looking forward to our next race.

In the boys race there are lots of Year Six runners.

Tremendously Speedy Toby, Awesome Arthur, Jogging Jake, Brilliant Beau and Non stop Nathan!

This is what Super Sam has to say about the race at Coxleigh Barton - Incredible cross country.

Cross country is a tough sport that takes place over tons of different terrains. Flat grass with holes and tough hills covered in log swaying grass. At the moment the under eleven Bradworthy boys are in first position. Coxleigh Barton was a blast.

At the start of the race Harlow (my team mate) was following me. We came up to a gate on the hill where there was a huge puddle that took me by surprise. I nearly stumbled but I caught myself before I could fall. For a second I thought that I couldn't go on because I had an awful stitch but then, suddenly, I saw a group of runners up ahead and I knew I could overtake them. Three metres, two metres, one metre, boom! They were in my rear view mirror .

Toby and George are getting good points, coming first in lots of races but anything could happen before the end of the season. – Gold Medals we hope.

I'm getting great results along with all of the Bradworthy cross country team and we're doing well because we're working as a team.

The next race will be at Shebbear College in February and we are all hoping that we will all finish well.

Lacey and Sam (Year Six)

Bradworthy Get Drowned In The Knock Outs

Dan made some brilliant saves and Toby scored some fantastic goals. Everyone in our team was playing brilliantly but we couldn't hold on!!

We were doing so well, Four games and didn't lose one. We were at the top of our group and ready to battle our way to the finals.

It came to the knockouts

We lost narrowly. Their number seven raced down the wing and blasted the ball into the back of the net. He was short but speedy and he got the winning goal.

2 – 1 and we were gutted !

Lunch time

It was twelve twenty, time for lunch and we made a bad decision - we went to the minibus and sat in the warm. Although it might seem strange we should have stayed in the cold because when we got on the bus our energy drained away.

Our quarter final match was at 1pm and we weren't ready, we had so many shots and opportunities, we hit the bar three times and their keeper pulled off loads of amazing saves, but sadly we missed all of them, except for one.

We were beaten. We had so much fun. In the end we were disappointed but happy that we had taken part. There's another Devon competition in the Summer and we're determined to train hard and win this one !!!

By Ollie (Year Six)

NORTH DEVON CHAMPIONS !!!

Our cross country runners took part in the North Devon Championships when they competed at Coxleigh Barton just before Christmas.

If we're being honest I'm not actually sure we knew it was the Championship Race!

At least no one had the chance to be overcome with nerves!!

Well done to George (Year Four) and Toby (Year Six) who won their races and are now North Devon Champions at under nine and under eleven.



JUNIOR NEWS

Milton Toddler Group's New Normal!

Like everyone the last 2 years have certainly made a huge difference to this group. Most of the children we did have, have now moved on to either school or pre-school, leaving us much depleted. On top of this others can no longer come because of vulnerable family members at home, so we have to accept having a much smaller group of children. However, the children do thoroughly enjoy time together as well as the adult helpers, Mums, Grans or Carers.

Over the last 8 years we have built up a good selection of games, toys, larger ride-ons and craft materials, these get used every week. Local people have also kindly contributed to our varied of essentials, we've been really grateful for these! The children now bring their own snacks but we do offer hot drinks and biscuits around for just a small donation.

We were wondering if other adults might like to drop in on a Tuesday morning between 10am and 12 noon for a coffee and chat? We would love to see you. We find it's a happy experience to get together; spending time with such joyful children really does lift the spirits and brighten the day. You might like to come along to the following –

An Opportunity
To Meet and Support the
Local Toddler Group
At the Schoolroom on
Tuesday, 12th April
from **10am – 12noon**
For an Easter Coffee Morning
Easter Activities for Children
Miscellaneous Stall
Donations for Great Ormond St. Hospital

SUNDAY SCHOOL

All children, young people and parents are invited and welcomed to come along to our monthly service of All Age Worship at the Methodist Church, normally 2nd Sunday each month at 11am. The normal format is to meet together for about 10 minutes and then children and young people move into Sunday School, when many activities are provided – crafts, cooking, etc., - and at the conclusion, tea/coffee & biscuits are served and time to meet and chat. For dates please see details under Chapel News. Please join us !!

Holsworthy Walk and Talk

February can sometimes feel that the only good thing about it is that it is very short. However, our programme of walks is looking forward to spring and we recently visited Dunsland Park where we were rewarded with a panoramic vista of snowdrops. In April we will be visiting Meldon where the valley sides will hopefully be carpeted in bluebells which have been quite spectacular in previous years.

With the festivities behind us and the days getting longer it is a good time to think about increasing activity and meeting new people to enhance our well-being. A piece of research on the benefits of physical exercise has recently been published by a team from Queensland, Australia who have been looking at Dementia. They have discovered that exercise activates the production of new cells in the part of the brain which is critical for learning and memory. The loss of these cells is a major contributor to the development of dementia.

Walking with others is a good way to stimulate the little grey cells. Apparently, the great writers J R R Tolkien and C S Lewis often walked together to discuss ideas. From one such conversation The Chronicles of Narnia were created. Although this time of the year can be a bit chilly, a woolly hat is a good way to keep the little grey cells warm and who knows what masterpieces may be created on our weekly walks?

We walk on Mondays and Fridays. All walks start at 10.30 am and are FREE. Membership forms are available from our Volunteer Walk Leader prior to the start of the walk.

Our website has lots of up to date information, details are below.

Contact

holsworthywalkandtalk@gmail.com

<http://holsworthywalkandtalk.co.uk>

Gillian Aston 01409 254642



NEWSLETTER FINANCES 2021

The Group reports on the finances for the year 1st January to 31st December 2021. The financial statements are set out below.

	£	£
Receipts during 2021:		(2020)
Advertising ^{NOTE}	1310.75	(805.79)
Personal donations/subscriptions	0.00	(35.00)
Grant – Parish Council	100.00	(100.00)
Total	1410.75	(940.79)
Payments during 2021:		
Printing	1125.15	(770.92)
Postage	0.00	(0.00)
Total	1125.15	(770.92)
 <u>Net gain for the year</u>	 285.60	 (169.87)

Funds in hand at 1st January 2021:

HSBC Treasurer's Account.....	2368.47
Cash & Cheques held	0.00
Total	2368.47
Add net gain for year	285.60

<u>Funds in hand at 31st December 2021</u>	<u>2654.07</u>
---	-----------------------

Represented by:	HSBC Treasurer's Account.....	2654.07
	Cash & Cheques held.....	0.00
		<u>2654.07</u>

NOTE: Funds in hand at 31st December 2021, include the advertising revenue 'in advance' for 2 editions – March & June 2022, valued at £640.00

The Newsletter has continued to be favoured with the support of nearly all advertisers, from within the parish and neighbouring parishes and towns, despite another awful year. We lost 3 advertisers and gained 7, no editions were cancelled this year due to lockdown restrictions.

The Parish Council kindly gave an annual grant of £100.

Various forms of community support enable the continued delivery of approximately 237 copies free of charge, one to each household in the parish and in Abbots Bickington.

We record our sincere thanks to all our supporters and to those who deliver your newsletter to your doorstep, and to Tracey Toft for independently examining our records and accounts.

If you wish to advertise in this Newsletter, please contact :-
David Taylor - 01409 261577 / 07434024113 - mdnld@hotmail.co.uk



DEVON & CORNWALL
CONSTABULARY

Holsworthy Rural Policing Update 1/11/21 – 31/12/21:

The following crimes have been reported:

There were also 10 domestic related crimes reported during this period.

ASHWATER:

1 x Theft of motor vehicle

BRADFORD:

1 x Burglary other than dwelling

1 x Going equipped for burglary

1 x Possess bladed article in a public place

BRADWORTHY:

2 x Communications offence

1 x Import goods with intent to evade prohibition

BRIDGERULE:

1 x Harassment without violence

COOKBURY:

1 x Burglary other than dwelling

HALWILL:

1 x Criminal damage to motor vehicle

1 x Import goods with intent to evade prohibition

HOLLACOMBE:

1 x Burglary other than dwelling

HOLSWORTHY HAMLETS:

3 x Burglary other than dwelling

1 x Theft of property nameplate

1 x Assault occasioning Actual Bodily Harm

1 x Dog causing injury in a private place

1 x Assault by beating

1 x Theft - other

PANCRASWEEK:

1 x Owner of dog dangerously out of control

PYWORTHY:

3 x Burglary other than dwelling

SHEEPWASH:

1 x Use threatening/abusive/insulting words or behaviour

ST. GILES ON THE HEATH:

1 x Use threatening/abusive/insulting words or behaviour

1 x Assault occasioning Actual Bodily Harm

TETCOTT:

1 x Communications offence

THORNBURY:

1 x Theft – other

3 x Burglary other than dwelling

1 x Import goods with intent to evade prohibition

WEST PUTFORD:

1 x Use threatening/abusive/insulting words or behaviour

Sadly, the last couple of months has seen a spate of burglaries from outbuildings across our area. An arrest has been made in relation to the going equipped for burglary offence and investigations are ongoing into these incidents. We would ask residents to remain extremely vigilant and to report any suspicious activity to us, using one of the methods detailed below.

Crime prevention advice is available on our website:
[Rural crime | Devon and Cornwall Police \(devon-cornwall.police.uk\)](https://www.devon-cornwall.police.uk/)

If you have an incident to report, don't hesitate to ring the Police on 101, or email 101@dc.police.uk.

Always call 999 if you see a crime taking place.

Crimes can also be reported via our website:
<https://services.devon-cornwall.police.uk/crimereporting/>

and information can be passed using this link:
<https://www.devon-cornwall.police.uk/contact/contact-forms/report-something/>

or by calling Crimestoppers, anonymously, on 0800 555 111

PC Amanda Brown & PCSO Mark James
Holsworthy Police Station torridge@devonandcornwall.pnn.police.uk

MILTON DAMEREL & DISTRICT GARDENING GROUP

NEEDS YOU.....

To join us and enjoy our talks and garden visits, to serve on the committee and to help organise the Annual Garden & Produce Show. We have to face facts...even before all the issues with Covid over the last couple of years our numbers have been dwindling. It has been a struggle to get the minimum number of 10 for a group garden visit and an audience of only small handful of people is a bit embarrassing for us and our speakers. We did get a good turnout for Rupert Kirkwood's talk "The Coastline of Britain from a Kayak" thanks to the non-members, who had known Rupert from his life as a local vet, who boosted our ranks considerably. His talk was inspiring and the photos were magical. We had to cancel our December meeting and our February talk is also in jeopardy as only 6 people have so far expressed an interest.

So, folks, I'm telling it like it is here. We are struggling to stay alive. I'm sure those members who do come along will agree that it would be a shame for the group to close. We know the annual show is always well supported so there are gardeners out there but it seems that the group as it is does not grab their attention or inspire them. We are open to change if that's what is needed to thrive. We just need to know what people would like.

All meetings are normally on the **3rd Monday of each month at 7.30pm in the Parish Hall** or stated venue. Membership is £5 and £2 per meeting, visitors welcome at £3. Tea and coffee and biscuits are provided.

Our Spring programme is:

Monday 21st March 2022 – A.G.M. and Seed Swap

Don't need a whole packet of peas or sunflowers? Got a better germination rate than you need? Bring your surplus seeds or seedlings (labelled please) and swap them for something else.

A.G.M. - A decision will be taken at this meeting as to whether the group should continue or close. This is your chance to have a say in how the club is run, stand for committee and review our finances. The current committee members have completed their 2-year run and so the positions of Chairman, Treasurer and Secretary will all need to be filled. We also need someone to take on organising the Flower & Veg show.

Monday 18th April 2022 – Penny's Primulas

Talk by Penny Jones of Staddon Farm Nurseries. Penny and Melvyn started the nursery in 1996, with a particular interest in alpine and Asiatic primulas. They now exhibit their *Primula sieboldii* collection at the RHS shows – Cardiff, Malvern Spring Festival and Chelsea as well as on our doorstep at Rosemoor. Penny will bring plants for sale.

Please email MDADGG@btinternet if you want to attend any of these events, to join the group, or are willing to join the committee. You can also text or call me on 07853319250.

Thanks for reading this and I hope to see you at our meetings.

Diana Illingworth-Cook, Chairman, MDADGG

The Westleigh Inn

Westleigh, Bideford, Devon, EX39 4NL
01271860867.

Having had a bracing Autumn walk along the waterside in Instow we headed for lunch at The Westleigh Inn in the village of Westleigh. From the outside it has a real country pub look and the atmosphere inside didn't disappoint. Well spaced tables (covid regs) were already full of diners.

Choices on menu were inviting and Jim chose "Steak and Real Ale Pie" and this was a pie, not just stew with pastry on top the portions were so large it almost beat him! I chose from specials menu and had fresh line caught Clovelly mackerel and 2 were served up with fresh veg, again very generous helpings and delicious. The waitress checked that I was ok with the fish having heads on as one client had been quite shocked at this! There is a very tempting dessert menu but we were full up so passed on them this time.

The pub is well signposted through the maze of the village and it is a surprise to find it has a large car park and an even larger garden with plenty of seating and great play area for children and an added bonus of fantastic views over to Bideford. I think it must get packed in the height of summer so might be worth picking your times!

Main courses range from £14 + but there are some "lighter bite" options. Home cooked food and local ingredients what's not to like? Lunches daily 12-2.30pm, evenings food served 5-8.00pm. I hear the Sunday Roasts are excellent.

The place is well worth a visit.. Melanie Richardson .

WILLS – GIFTING TO CHARITIES

Most of us see kind individuals shaking boxes for charity, oftentimes these lovely people will position themselves outside shops, often braving the wind and rain to raise money for their favourite charity.

LEGACY GIVING

It may come as a considerable surprise to many that charity boxes, charity runs and charity events do not form the major part of the charity's income. By far and away the biggest source of income for charity is legacy giving. In simple terms charities get most of their money from what people gift to them in their Wills. The last figures I have seen are for 2017. In that year charity legacy income reached an all-time high when £2.8 billion pounds came from this source alone. That is an increase of nearly £38 million on the 2016 figures, and I expect the 2021 figures will show another record has been achieved.

SMALL NUMBERS

Believe it or not, however, only 6.1% of people making Wills leave any gift to charities. It is estimated that if just 1% of those estates which have given nothing to charity did in fact include a charitable gift in the Will, this would alone raise almost £100 million pounds extra for charities. There are also significant tax benefit for gifts to charities as the charitable gift is stripped out of the value of the estate. This can reduce the tax burden very considerably for that estate.

RICHARD COUSINS

There has been some focus on the legacy giving following the very sad death of Richard Cousins on New Year's Eve in 2017. You will recall he was a 58 year old widower who died in a sea plane accident with his two sons, his fiancée, and her young daughter. He had a multi-million pound fortune. He would have left the majority of his wealth in trust for his two sons – but sadly they perished with him. That meant the "common tragedy clause" in his Will came into effect, and accordingly his chosen charity Oxfam became the principal beneficiary of his estate. He had nominated Oxfam in his Will to benefit from his estate if his next of kin failed to survive him – and this was the result. If he had not written such a clause into his Will, then the intestacy rules would have come into play, and parents, siblings and others would have been the beneficiaries. Instead, Oxfam received a legacy thought to be in the region of £41 million pounds.

WHAT IF?

It is said by many charities that Richard's sad death will help to encourage people to talk honestly about what they want to see happen when they die. This should include plans on what might seem to be an unlikely scenarios. Lawyers will generally help clients when drafting Wills by asking the "What if?" questions. I have witnessed, for example, on very many occasions parents outliving their children and having provisions in their Wills for where the money should go if that becomes the sad reality.

Busbys Solicitors

The Strand, Bude EX23 8TJ

OFFER YOU

**A WIDE RANGE OF
LEGAL SERVICES**

01288 35 9000

www.busbyslaw.co.uk



EXISTENTIAL RISK

Unless charities continue to get gifts made to them in Wills, many are likely to face such an economic downturn that their very existence is likely to be questioned. The State is simply not in a position to pump money in from Treasury funds. If you have not yet prepared a Will then perhaps this article may be some kind of a prompt to persuade you to consider making a gift – no matter how small – to your favourite charity when you prepare your Will.

ACTION

If you need help in administering the estate of a friend or loved one then get in touch with us here at Busbys. If you have yet to do a Will, and more than half of the adult population have still not done so – then give it serious thought as soon as possible.

Contact me here at Busbys on **01288 35 9000** and see also our advert on this page.

**John Busby
Busbys Solicitors
Bude**

Milton Damerel Parish Hall

Registered Charity No. 281123

The Parish Hall is well and truly open with lots of events now happening, and new ones planned so watch this space!

The Christmas Carol and Mulled Wine evening in December was well supported and raised £270 for the Devon Air Ambulance. In January we had the Quiz to celebrate Burns Night and in February the Valentine's Chocolate Bingo.

19th March - Coffee Morning, commencing at 10.30 am in the Parish Hall.

Donations for Comic Relief on the day as well



Easter Monday - Egg Hunt/Afternoon Tea on Monday, 18th April. Time 3 pm

Monday 2nd May - Table Top Sale from 10am – 2pm.

Regular Events:

Amateur Radio Club	1 st Wednesday of the month
Milton Damerel Photographic Society	2 nd Wednesday of the month
Flourish with Fitness – Jenny Spicer	Every Tuesday at 7 pm
Gardening Club	3 rd Monday of the month
Whist Drive	3 rd Saturday of the month.



We are always looking for new people to join us on the committee, particularly younger people and men! If you think that you might have some good ideas for helping to keep the hall functioning or ideas for fund raising events we would love to hear from you. Chairman: Mel Richardson, Secretary: Kate Moyse, Treasurer: Tracey Toft, Publicity: Sara Lawes. Wendy and Rob Green, Julie Sage, Margaret Fishleigh, Elizabeth Bellew, Christine Cook, Charlie Brimacombe, Kay Bellew and Bethany Bellew.

Hiring the Hall

The hall is available for hire for events and private functions at very reasonable rates. See the community website www.miltondamerel.com to download a booking form and Terms and Conditions of Use, or telephone Julie Sage, the booking secretary on 01409 261308.



Platinum Jubilee 5th June

To celebrate the Queen's Platinum Jubilee we are planning a Street Party/Family Fun Day. This will be a community event and we hope everyone will be involved. Details will be posted on our Facebook page as they are finalised, so mark the date in your diary, watch out for updates and join us for a fun day of celebrations.

There will be an Open meeting on the 24th March starting at 6pm at the Parish Hall to gather ideas of what you might want on the day, and for volunteers to help either with the organising, or help on the day itself. Everyone is welcome so please come and share your ideas for the day.

Evelyn's Walk. 13/12/21

This is the first year that I have arranged a walk in December. Generally, it's such a busy month for everyone & I thought that people would be frantically preparing for Christmas. This year I thought that we have missed out on so many things due to COVID that I would organise a walk to try & make up for those that got cancelled.

We met at Higher Larkworthy Farm on Monday 13th December with very kind permission from the Kirk Family. It is very much a working farm & I am most grateful for their hospitality. We followed the footpath signs that took us through Lower Larkworthy Farm & across the grassy fields. Due to the undulating terrain, it was somewhat difficult to work out the route but someone has very cleverly painted a fence post orange which caught our attention. We used the wooden bridge to cross the stream & then walked up hill through the trees. In previous years, this part has always been a bit slippery



underfoot but actually it wasn't too bad. Several people were intrigued where we were going to emerge as it's very easy to lose all sense of direction. We actually joined the lane at Henford & by turning left, we headed towards the village of Ashwater. This involved a particularly steep up hill climb but we enjoyed beautiful rural views along the way. As we approached the brow, we were watched with interest by three horses in the field on the left. They probably heard us before they saw us! We ventured left along a track. It's not a public footpath but the Kirk family had kindly given us permission to return to our cars that way. We admired some very attractive lichen on the trees by the stream. Apparently, this is a good indication of the quality of the air. As we approached the farm, we admired the Glamping pods & agreed that it would be a very tranquil place to stay. The views are stunning. Everyone agreed that we had been very fortunate with the weather. It

was incredibly mild & we didn't get wet. Not bad for mid December.

I wish everyone a most enjoyable Christmas thinking that there will be fewer restrictions & so it has got to be better than the last one. I am reassured that we live in a most beautiful part of the country with good access to lovely walks. I anticipate a lot of people getting out for fresh air & exercise. Take good care & enjoy yourselves.

Evelyn's Walk 10/01/2022

Looking out of the window on a beautiful sunny albeit chilly morning, I am wondering why it couldn't have been like this for our walk on Monday 10th January. It wasn't cold. The weather forecast described it as being mild. That word mild is usually associated with wet. Hey, it was just one of those mizzly mornings with very low cloud. In spite of that, thirteen of us met at Thornbury Holiday Park in Woodacott with very kind permission from Lisa, Paul & young Albert. If anyone is ever looking for holiday accommodation locally, they have several cabins in a beautiful tranquil setting.

Knowing how much rain we have had recently, I devised a circular route of approx. 3.7 miles primarily along the lanes. We turned left out of the main entrance which took us onto the lane towards Five Ways. By turning left, we continued along the lane passing the start/end of a couple of footpaths at Branches Cross. Hopefully, we'll be able to return & enjoy them when the ground dries up. When we reached Cranapool Cross, we turned right along Thorne Lane. Part way along the lane, we saw a few Snowdrops on the bank. What a joy. The lane brought us to what I call "Bagbeare Cross" as there is no official name on the signpost which is unusual. This is where I took the photograph after Meg had told us some fascinating snippets of information about the locality. Apparently, there used to be very much more woodland than there is now. This introduced us to the "Lumber Jills" who used to manage much of the woodland all over the country during WWII. If you want to learn more about them, Meg wrote a really interesting article in the December issue of the Thornbury Tatler. Details can be found online unless you know a resident of Thornbury Hamlets who has a hard copy of the Parish magazine.

We were very fortunate to have Meg's company as she suggested that we venture along the footpath that crosses her land. Previously, it has been quite impassable but in recent years it has been much improved with assistance from Martin Caddy, our local PROW warden from DCC. We avoided the wettest part by taking a slight detour through Meg & Paul's woodland & across their field. This enabled us to be introduced to their two Dartmoor ponies who



watched us with great interest. When we reached the lane, we turned right which brought us to St. Peter's Church. It was a great opportunity to revisit the tomb which dates back to 1702 & is Grade II listed. It was restored in recent years & we were fascinated to learn that several of the deceased's descendants still live locally. Some of the headstones are very difficult to decipher but there is an index & transcriptions are available in the Church for anyone who is interested. There are photographs of the graves & their inscriptions online on the above website.

From the Church, it was a short stroll along the lane back towards the Holiday Park. We were all surprised that the walk had taken two & a half hours. The time had flown by & we all agreed that we had much enjoyed having Meg's company. We might not have been able to enjoy far reaching views but she had provided us with lots of fascinating snippets of information about the Parish. I think we will all look forward to returning to Thornbury Hamlets.

Evelyn Sharman Tel: 01409 259 848 Email: evelyn.sharman@btinternet.com

Farewell to our Postie Linda.

Linda our Postie, decided to make a career change into catering late last year, she and her daughter have taken over the running of "The Muddy Boots Café", in Holsworthy Livestock Market.

For about 30 years she had delivered the daily post to Milton Damerel regardless of the weather, rain, wind, snow and sunshine, keeping an eye on the elderly and helping anyone who needed it, she always had some dog biscuits for her canine friends as well.

During the pandemic she did shopping and collected prescriptions for those who were isolating and needed help, which was a lifeline to many and a much appreciated action by those in the Parish.

The photo is of Councillor Teresa Walters presenting her with a farewell and thank you gift for her service to the community.

Always a laugh to start the day, we will miss you Linda but wish you every success in your new venture.

Linda had a few words to say to us.

"I've been delivering to Milton for approximately 26 years and I've seen lots of kids grow up, get married and have babies, some sadness when some of the older ones have died, I have always felt part of the community and most of the village I would class as friends, if I needed anything from a cup of tea to a pair of dry socks. I was sorry to leave you all but it has been worth it so far. Everyone can come and see me up at the market café when ever they want it will be lovely to see you all.xx"



Parish Footpaths

All of our footpaths are open and currently usable although please bear in mind that as we move into the wetter months parts of some paths will be muddy and that suitable footwear should be worn.

If you come across a problem on any of our own Parish footpaths, please contact the Parish Clerk or any of our Parish Councillors. Their contact details are elsewhere in this newsletter. The sooner that a problem is known about then the quicker it can be put right.

If you are new to the area and would like to know where our local paths go there is a downloadable booklet on the footpaths page of the Milton Damerel website. For footpaths further afield, both Devon and Cornwall have inter-active maps on their ".gov" websites which can be used to find footpaths and bridleways across both counties.

MILTON DAMEREL AND DISTRICT OVER 60 GROUP

We are please to report that the Committee are now happy to start regular meetings on Tuesday 1st March, from 2.30 to 4.30 at Milton Damerel Parish Hall.

We are looking forward to seeing all our Members once again, for a friendly social and chat.

New Members always welcome

Chair:	Edward Beckly	
Treasurer:	Iris Fry:	Tel 261 322
Vice Treasure:	Pam Pidgeon:	Tel 261 428
Secretary:	Colin Boucher:	Tel 07906 503810

• Class 4 & 7 MOT Test Centre

• All Makes Car and Light Commercial
Repair and Servicing

• FIAT Authorised Service Agent

• Petrol Forecourt INC LPG, Off Licence and Shop



W. Sanders & Sons Ltd

Family-run for Over 100 Years

Tel: 01409 261212

For any further information, please ask for
Rex or Denyse (Workshop) | Penny or Sue (Petrol Forecourt)



Horrelsford Garage, Milton Damerel, Holsworthy EX22 7NU, United Kingdom

GARETH POLLARD ACCOUNTANCY SERVICES

Friendly, Reliable, Affordable

- | | |
|---------------------|-----------------|
| • Accounts | • Bookkeeping |
| • Limited Companies | • VAT |
| • Tax | • Payroll / CIS |

Over 20 years experience - Free initial meeting

mail@garethpollardaccountancyservices.com

T: 01409 254817 M: 07811 164428

The Old Orchard | Holsworthy | Devon | EX22 6LT

Bradworthy Primary Academy Diary Dates

Spring Term (1)	Mon 10 January – Fri 18 February
Half Term	Mon 21 February – Fri 25 February
Spring Term (2)	Mon 28 February – Fri 8 April
Easter Holiday	Mon 11 April – Fri 22 April
Summer Term (1)	Mon 25 April – Fri 27 May
Half Term	Mon 30 May – Fri 3 June
Summer Term (2)	Mon 6 June – Wed 27 July

Visit our **LARGE** showroom!
Stock Rolls Available



Telephone 01409 241421
Remnants

Free measuring and quotation with no obligation, samples available to take home.

Carpets, Vinyls, LVTs, Altro, Laminates, Hardwood Flooring Supplied and Fitted.

Increasing range of Rugs and Mats.

The Square, Bradworthy, Holsworthy, Devon EX22 7TB

E-mail cornerstores-carpets@btconnect.com Web cornerstorescarpets.co.uk

ABINGDON

WESTEX
FINEST QUALITY CARPETS


Brintons

Cormar
CARPETS



Katie Allin
S.A.C Dip RFHP

Energy is more expensive than ever

How can you
reduce your
Energy usage?

Head to our
website to
book a

FREE one-to-one advice
session today



Email: martin@devoncommunities.org.uk
Phone: 07984 001542

www.bit.ly/dctadvice



WESTERN POWER
DISTRIBUTION





Local Co-ordinators:		
Strawberry Bank	Edwina Hale	Tel: 261263
Gratton, Whitebear & Fore Street	Edgar Pett	Tel: 261277
Venn Green	Mike Jackson	Tel: 261196

As we get used to living with covid people are now turning their thoughts to holidays and so it is timely to remind everyone of the 'Keyholder Registration Scheme' which is run by the Devon & Cornwall Police. Individual residents and businesses can record details of their keyholders which enables a responsible person to be called out if an incident occurs at your property whilst you are not in attendance. Your details will be held on a secure database and you can be sure that your details will only be made available to the emergency services. There is a small charge for this service which is usually no more than a couple of pounds. To join, simply phone the Devon & Cornwall dedicated phone line: **0901 470 0440**. Full details of this scheme can be found on the Devon & Cornwall Police website.

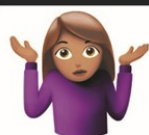
<https://www.devon-cornwall.police.uk/contact/ask-ned/question/70a13074-0e49-e611-9c3e-a0369f5f0dfb>

For anyone who may have acquired some new equipment at Christmas, such as electrical goods or cycles etc. in the household, don't forget to update your records at 'immobilise.com' if you use their services. If you have not come across this facility before, it is a free to use independent and secure database where you can store details of all valuable items and property with sentimental value such as electrical goods, power tools and sports equipment. The service operates countrywide and is accessible to the police so that any recovered items can be returned to their rightful owners. Of course this won't happen unless your property is marked in some identifiable way which is unique to your household. For example, use your house name or number followed by your postcode. We have covered property marking in detail in a previous article but if you don't have this to hand please ask your co-ordinator for a fact sheet

Using Mobile Phones Whilst Driving

There has been a recent national campaign against using a mobile device whilst driving, which was supported by Devon & Cornwall Police. They have asked that we publicise this message because it is just as relevant driving along on the rural lanes as on the "A" roads and in towns. It has been calculated that a person's reaction time whilst using a mobile device is nearly 3 times higher than somebody who is at the drink-drive limit or been using mild drugs. With increasing numbers of accidents being attributed to using mobiles whilst driving, harsher penalties are now in place and are being enforced.

Using a handheld mobile device while driving is illegal. Driving while distracted is dangerous to you and other road users.



Saying you didn't know is ~~no~~ excuse

Penalties for using a handheld mobile device while driving:

6 points on your licence and a £200 fine



Bradford Primary School,
Holemoor, Bradford, Holsworthy, Devon, EX22 7AB
01409 281432. admin@bradfordprimary.org.uk

School news:

It has been very busy at Bradford School with a lot of exciting learning and enrichment for the children. Also, the children and teachers have been working with an external provider, 'The Voices Foundation', to implement an exciting new singing curriculum for Music.

We have been talking about Children's mental health week this week with a focus on **Growing Together**. **Growing Together** is about growing emotionally and finding ways to help each other grow. However, emotional growth is often a gradual process that happens over time, and sometimes we might feel a bit 'stuck'.

Fern Class news

This week Fern class have celebrated children's mental health week and had some reflective discussions about how we can grow together. The children have considered who supports and helps them in their lives creating support balloons and considered their personal emotional growth creating growth ladders to break down their goals into small steps of success. Bringing this all together the children are creating posters to describe ways they can support their positive mental health ready for to put into are calm corner in our reading garden.

In English we have continued to look at our book, Cinderella of the Nile, and written some superb diary entries from the point of view of Rhodopis, our main character. The children were able to draw inferences from events in our book to describe how she may have felt during her journey across the sea and produce some beautiful writing.

In maths, we have just finished out statistics unit looking at tally charts, pictograms and tables. The children were able to draw and interpret the information accurately to draw conclusions about the information provided. They were also to confidently create their own pictograms, thinking about an appropriate key to represent the information and Miss Lovering's interesting journey to work! Over the next couple of weeks, we are going to be looking at properties of 2 and 3 dimensional shapes.

We have been super scientists this week investigating the pitch of different instruments and thinking about how the sound wave changes as the pitch gets higher or lower. This linked well with our visit from Mrs White for music in which the children were able to use humming and singing to match Mrs White's pitch.

After half term, on Wednesdays, the children are going to be having Dance with Miss Squire in the Morning and Wild Tribe sessions in the afternoon with Mrs Midwinter.

CONTINUED OVER PAGE

Bracken Class news

This week we have been finishing off our English sequence – The Dreadful Menace. The children have pulled together all of the learning that we have been doing to create their own versions of the poem, thinking carefully about their vocabulary choices and how to set the tone for the reader.

We have started our new maths topic – decimals. The children have been learning how fractions and decimals link, as well as how to write numbers with decimal places accurately using a place value grid.

In History this week we have been debating who was the worse King: Richard I or John? The children had to analyse the information about both kings and think carefully about what skills a good medieval king might need – some interesting comparisons to modern day royalty.

This week has been Children's mental health week, so we have been thinking about all the ways that we have grown this academic year. The children have created support balloons but identifying those individuals who support us in achieving goals we set ourselves and have set themselves some Growth Goals to work on over the rest of the term.

Breaking news!

Mrs. Jo Luxford has been appointed as an Associate Principal for both Bradford & Black Torrington Primary Schools. She is joining after half term & we are looking forward to her getting involved in School. A further appointment has been made with Mr. Chris Luxford to get the pre-school up & running – Anyone interested in finding out more about what Bradford School can offer for Children over 2 years of age please do get in touch with the school. There is full government funding available.

The splendour of spring arrives and the garden awakes!

Spring is one of my favourite times of year, after a lot of tidying up over winter the garden is ready for all the plants to burst into life again and start the spring spectacle with colourful flowers and lush foliage, with a sense of freshness and hopefully a change in the weather!

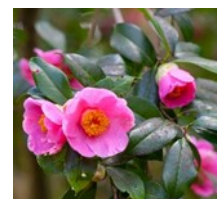
The first sign of spring to me is the vibrant and often colour clashing flower power provided by some of our garden favourites: camellias, rhododendrons and magnolias. These plants come from many countries, including China, the Himalayas and Japan. They have been a staple of British horticulture since intrepid plant hunters, scouring the world in search of interesting plants to grace our gardens, first introduced them.

Here at RHS Rosemoor we grow a huge variety of these gems, many we plant under a light tree canopy to protect them from the often sharp spring frosts which can damage their flowers. Once these trees are in leaf, they protect and shade them during the hotter summer months.

With so many of these gems to choose from these are some I would not do without!

Camellia x williamsii 'Saint Ewe' AGM

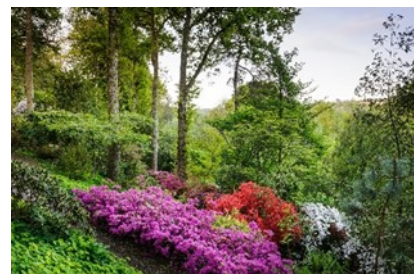
With a vibrant single pink flower, it arose from breeding work at Caerhays Castle in Cornwall in the 1920s by John Charles Williams, and was named after the nearby village of St Ewe. This is a reliable flowerer often starting in November and continuing until April.



©RHS/Mark Winwood

Azeleas flowering in the Woodland Garden Rosemoor

Rhododendron 'Hino-crimson', with lush green foliage which adds to the garden throughout the year and bright crimson flowers in spring. The evergreen Japanese azeleas are vibrant in colour from pure whites, shocking oranges and vibrant reds and when all planted in bold groups they provide a spectacle of pure flower power with all the leaves hiding below.



©RHS/Jason Ingram

Magnolia campbellii

A very special plant *Magnolia campbellii* which is not for a small garden; this graceful flowering tree from the Himalayas produces stunning pink to white flowers the size of dinner plates, it is one of the first magnolias to flower and if not planted in a nice sheltered spot can get caught by a frosty night.



©RHS/Carol Sheppard

Jonathan Webster Curator RHS Rosemoor



Contact your local Slimming World Consultant and book your place in a warm and friendly group today!

**Holsworthy
The Memorial Hall**

Tuesdays 5.30pm & 7.00pm
Thursdays 9.00am & 10.30am
Tel: Essie 07816 686121

**Bude
Budehaven School**
Wednesdays 5.30pm & 7.00pm
Tel: Essie 07816 686121

#SWtastethefreedom
f t i slimmingworld.co.uk



Lending with Heart and Mind

**Torridge District Council fund
a not-for-profit loan scheme for homeowners
and landlords*.**

**We understand the expense of maintaining
your home and we work with you to take the
stress out of funding repairs, improvements or
adaptations.**

We see you as an individual, not a credit score.
Our knowledgeable team of advisers will guide
you through the process of applying for a home
improvement loan.

For a no-obligation assessment
or more information visit
www.lendology.org.uk or call **01823 461099**

Heatherton Park Studios, Bradford on Tone, Taunton, TA4 1EU

*subject to eligibility

Blackberry Farm Shop

Award Winning

Tel - 01409 261440
Sat Nav - EX22 7NP
www.blackberryfarmshop.co.uk

Open 7 Days
Free Entry
Dogs Welcome

Café Tea Garden Plants

Farm Animals

Real Food from a Real Farm Shop



WHAT'S ON

HATS Theatre, Holsworthy		www.holsworthytheatre.co.uk
Holsworthy Amateur Theatrical Society "Who Goes Bare", a farce by Leslie Darbon & Richard Harris	24 th – 26 th March @ 7.30pm 31 st March – 2 nd April @ 7.30pm	
The Countrymen, a Cornish folk/rock/harmony band from Launceston have booked Theatre For more information info@thecountrymen.co.uk	6 th May	

The Plough, Torrington Box Office: 01805 624624 www.ploughartscentre.org.uk

For prices, tickets and Covid-19 requirements

..a selection of events at The Plough, Torrington, unless indicated. For a full programme of all events in The Plough diary please go to the web-site. There are several events, workshops, etc., held at other venues in North Devon.

HIDDEN HISTORY TOURS

Torrington Town Hidden History Tour ... meet at The Plough	23 rd March & 18 th May @ 7.30pm
Bideford Town Haunted History Tour .. meet at The Library, New Road	31 st March, 21 st April & 18 th May @ 7.30pm

THEATRE

The Handelbards 'MacBeth'	2 nd & 3 rd March @ 1pm & 8pm
Townsend Productions present Yes! Yes! U.C.S.!	10 th April @ 4pm
NT Live Henry V (satellite screening)	21 st April @ 7pm
A Tell Me A Story Show : 'Angel of Awakening' with Rosamund Clare	24 th April @ 11am & 2pm, 6 th May @ 10.30am & 1.30 pm

WORKSHOPS

Visual Arts: Symbolist Still Lives – a print collage & stencil	8 th April 10.30am – 2.30pm
Plough Print: Play exploring print techniques	23 rd April 10.30am – 2.30pm

DANCE

Bolshoi Ballet 'Swan Lake' captured live in February 2020	6 th March @ 3pm
Plough Prism & Motion Dance present The Jungle Book	29 th March @ 11am

FILMS

The Godfather	1 st March @ 7pm
The Electrical Life of Louis Wain	5 th March @ 5pm, 6 th March @ 7pm, 10 th March @ 2pm
Belfast	6 th March, 8 th March, 10 th March all @ 8pm
Death On The Nile	13 th March @ 3pm & 7pm 15 th March @ 8pm 16 th March @ 2pm 17 th March @ 2pm
The Eyes of Tammy Faye	20 th March @ 7pm 22 nd March @ 8pm 23 rd March @ 2pm 24 th March @ 8pm
Parallel Matters	23 rd March @ 8pm 24 th March @ 2pm
Nightmare Alley	27 th March @ 7pm 29 th March @ 8pm 31 st March @ 2pm & 8pm
The Duke	3 rd April @ 3pm & 8pm 5 th April @ 8pm 8 th April @ 2pm & 8pm 13 th April @ 3pm
River	6 th April @ 8pm
Licorice Pizza	12 th April & 13 th April @ 5pm & 8pm
The Tinder Box	13 th April @ 8pm
The Phantom of The Open	16 th April @ 5pm & 8pm 19 th April @ 2pm & 8pm 20 th April @ 5pm 21 st April @ 2pm
Sing 2	12 th April @ 2pm 16 th April @ 11am 19 th April @ 5pm 20 th April @ 2pm 22 nd April @ 2pm
Hive	20 th April @ 8pm
This Nan's Life	23 rd April, 28 th April & 30 th April @ 5pm & 8pm

SUDOKU

By KrazyDad

	2						7	
4	3			6				8
		8	3	2	7			5
8		2	9	5	6		1	
	6						8	
	7		1	4	8	5		6
2			6	9	5	1		
1				7			5	4
	5						6	

Difficulty: Easy

© 2018 KrazyDad.com

Fill in the blank squares so that each row, each column and each 3-by-3 block contain all of the digits 1 thru 9. Use logic and solve the puzzle without guesswork. For puzzle solving tips, and more puzzles, visit KrazyDad.com.

SUDOKU

By KrazyDad

		7				6		
	4			2				3
6			1			9		
3		1		8	2			
				5				
			4	9		1		5
		9			5			8
8				1			9	
		3				5		

Difficulty: Intermediate

© 2018 KrazyDad.com

Fill in the blank squares so that each row, each column and each 3-by-3 block contain all of the digits 1 thru 9. Use logic and solve the puzzle without guesswork. For puzzle solving tips, and more puzzles, visit KrazyDad.com.

Regular Events

Holsworthy Amateur Radio Club - Parish Hall
 Photographic Society - Parish Hall
 Parish Council Meeting - Parish Hall
 Chapel Sunday Worship - via Zoom
 Trinity Church Holy Communion
 Trinity Church Morning Service
 Fitness Classes - Parish Hall
 Holsworthy Walk & Talk
 New Baby & Toddler Group - Methodist schoolroom

1st Wednesday every month 7.30pm
 2nd Wednesday every month 7.30pm
 3rd Wednesday every month
 Every Sunday 6.30pm
 2nd Sunday every month 11.30am
 4th Sunday every month 10am
 Every Tuesday 7pm
 Every Friday 10am.
 Every Tuesday 10.30am till 12am

HOLSWORTHY BEACON METHODIST CHURCH

Sunday Services are held on first Sunday of each month.

Coffee Mornings have re-started and are held on Friday mornings in last week of the month.

(But note, not in December)

A warm welcome to everyone.

ABBOTS BICKINGTON AND CHURCH NEWS

No news from Abbots Bickington or Abbots Bickington Church. Church services are now every 3 months. The next service hopefully will be in May.

THE NEWSLETTER GROUP and GENERAL DATA PROTECTION REGULATIONS

The Newsletter Group has reviewed the guidance on how we should comply with the new requirements which came into force in May 2018. We have compiled 3 documents:

- Milton Damerel Newsletter GDPR Statement Privacy Notice
- Milton Damerel Newsletter Data Protection Policy
- Milton Damerel Newsletter Data Protection Procedures

Which set out the data we collect about individuals and organisations, our policy in collecting data, and the procedures we follow to protect the data we hold. All of these documents are available on request.

In summary we hold personal data as openly published in the Newsletter and for the purposes of administration in liaising with our advertisers and subscribers to the Newsletter. Regular readers will note the level of detail included on Page 4, about celebratory occasions and residential 'comings and goings', has been amended to comply with our data protection statements, and most importantly to achieve good protection of personal data, minimising the risk of inappropriate use of the data.

If there any concerns about the data we hold or publish please contact any member of the Group to request changes to the data. Group members and contact information is listed below.

If you would like to receive, or stop receiving, a digital copy of the Milton Damerel News Letter by email, please drop a line to the Compiler.


Disclaimer: The views and opinions expressed in any article are those of the authors and do not necessarily reflect the official policy or position of the Milton Damerel News Letter Team.

Advertisements

Conditions of acceptance. Orders for insertion of advertisements in this newsletter are subject to the approval of the members who may refuse or alter any copy. The newsletter and the members: - a) accept no liability for any loss or damage caused by an error or inaccuracy in the printing of any advertisement. b) Shall not be liable for any loss caused by the failure of the advertisement to appear on any particular day, in any specified position or page or by its failure to appear at all, and they reserve the right to refuse to continue its publication regardless of terms and conditions of any order or contract. Trades Descriptions Act 1968-All traders are reminded of the needs to ensure that goods offered for sale by advertisements comply with all relevant provisions of the above mentioned act.

To advertise in this newsletter contact David on 01409 261577 for more details.

The deadline for submissions of articles and advertisements for the next newsletter is 18th May 2022.



**Chimney Sweeping
Reasonable Rates
Ring David Seggons
01409 241702**

Now offering a new service
Carpet cleaning, £2.50 per m/2

GRASCOTT FIREWOOD

Quality Seasoned Firewood

£85: Single Load
£160: Double Load
£230: Triple Load

Delivery charges may apply

Tel: 01409 281393

E-mail: info@grascottfirewood.co.uk



Useful Contact details:

Parish Councillors:

Stephen Moyse (Chair) Tel 01409 261151
 Richard Piper (Vice Chair) Tel 01409 261114
 Rose Haynes Tel 01409 261577
 Jim Richardson Tel 07866 406977
 Gareth Piper Tel 07966 558385
 Peter Buckpitt Tel 07584 086693
 Teresa Walters Tel 0794 668827
 Lorraine Buttery (Clerk) Tel 01409 282956

Chapel:

Revd Rob Blackhall 01805 628041
 Stewards Dan Brett Tel 261609
 and Jeremy Sharp Tel 01409 261548.
 Property Steward (vacant)
 Secretary (vacant)

Church:

Revd Richard Freeman Tel 01409 241315
 Church wardens
 Isabel and Roy Fairbrother tel 01409 261181

Walks:

Gillian Aston Tel 01409 254642
 email: holsworthywalkandtalk@gmail.com
 Evelyn Sharman Tel 01409 259848
 mail: evelyn.sharman@btinternet.com

Over 60's Club:

Chair Edward Beckly
 Secretary Colin Boucher Tel: 07906 503810
 Treasurer Iris Fry Tel 261322
 Asst Treas Pam Pidgeon Tel: 261428

Neighbourhood Watch:

Edwina Hale Tel 261263
 Edgar Pett Tel 261277
 Mike Jackson Tel 261196

Toddlers :

Sheila Daniel Tel: 261466

Holsworthy Rural Police:

Urgent 999
 Non-Urgent 101
 holsworthy@devonandcornwall.pnn.police.uk

Parish Hall:

Booking Secretary Tracey Toft Tel 281295,
 or Kate Moyse 261151.

Gardening Group:

Diana Illingworth-Cook Tel 07853 319250
 Gail Whitley Tel 261792
 Lesley Self Tel 01409 261294

Natures Natterings

Tracey Slocombe Tel 07737 775205

Newsletter:

Regular contributors and features:

Nicky Martin
 email: n.martin337@btinternet.com
 Rose Haynes Tel 261577
 email: rose@grawley.co.uk

Chair

Lorraine Buttery Tel 282956
 email: mdnewsletter46@gmail.com
 Lesley Self Tel 261294
 Email: lesleydself@outlook.com

Treasurer/Advertising & Compiling

David Taylor Tel 261577
 Email: mdnld@hotmail.co.uk
 Tracey Slocombe Tel 07737 775205
 Email: traceyslocombe9@gmail.com

Peter Bromley
 Sarah Knightley
 Claire Woolsey
 Mel Richardson

SUDOKU Answer

6	2	5	4	8	9	3	7	1
4	3	7	5	6	1	2	9	8
9	1	8	3	2	7	6	4	5
8	4	2	9	5	6	7	1	3
5	6	1	7	3	2	4	8	9
3	7	9	1	4	8	5	2	6
2	8	4	6	9	5	1	3	7
1	9	6	2	7	3	8	5	4
7	5	3	8	1	4	9	6	2

SUDOKU Answer

1	9	7	5	4	3	6	8	2
5	4	8	9	2	6	7	1	3
6	3	2	1	7	8	9	5	4
3	5	1	6	8	2	4	7	9
9	7	4	3	5	1	8	2	6
2	8	6	4	9	7	1	3	5
4	1	9	7	3	5	2	6	8
8	6	5	2	1	4	3	9	7
7	2	3	8	6	9	5	4	1

N.J.BALSDON

Plumbing and Heating Engineer

Central Heating
Systems

Boiler Installation and
Servicing

Oil Tank Replacement

Emergency service

Underfloor Heating

Bathroom Design and
Installation

Plumbing and
Maintenance

Wall and Floor Tiling

Tel: (01409) 241621/07786 333042



Bradworthy, Devon



Registered Installer

PAUL NEWMAN
GENERAL BUILDER

Keeping your home up to date

New Build - Extensions & Renovations

Conservatories & uPVC Products

Roofing & Rendering

Plastering & Stonework

Property Maintenance

Kitchens

Bespoke services & much more

Fully qualified and insured.

For a friendly, local and professional approach,
contact Paul for a no obligation quotation or advice.

Please see Facebook 'Paul Newman General
Builders' page for portfolio.'

01409 241 637

07919 008 161

newmanpaul3@btinternet.com

MIKE WYE

The Home Of Sustainable Building

We supply a comprehensive
range of traditional, natural and
sustainable building materials
throughout the UK.



Natural Insulation . Lime Products

Limecrete Flooring

Polished Plasters . Clay Plaster

Breathable Paints . Tools

Building & Renovation



sales@mikewye.co.uk

01409 281644

www.mikewye.co.uk

F.A.B TREES



Tree
Surgery

Wood Chippings

Logs &
Kindling

Timber

www.fabtrees.co.uk

Freddie Blackford

07814 292 077

Email: freddieblackford@icloud.com

Humphrey Pullar Chimney Sweep
 NACS Registered & HETAS Approved
 Fully Insured
Professional Chimney Sweeping Service

- * Full Brush & Vacuum Service
- * Pots, Cows & Birdguards Fitted
- * All Types Of Appliances & Flues Swept & Serviced
- * Traditional & Powersweeping Techniques
- * Chimney CCTV Surveys
- * Bird Nests Removed
- * Smoke Testing

The Old Barn, Pancrasweek, Holsworthy, Devon, EX22 7JN
 Tel : 01409 240138 Email: humphreysweep@mac.com




APH
 Plumbing and Heating Engineer
 Gasafe Registered
 Nat Gas and L.P.G.

Boiler Upgrades, Installs and Servicing
 Central Heating and Solar
 Landlord/ Commercial Gas Safety
 Certificates

All plumbing works
 from dripping taps to complete
 bathroom installs/makeovers

TEL 01409 261442 MOB 07958901777
 Contact e-mail
george.aph@googlemail.com



RAW PIPER and SONS
Est. 1975

Kerry Heights, Milton Damere
 Your local aggregate suppliers for
 Top Soil, Sand, Stone, Dry Concrete Mix,
 Cement
 Plum Slate, Chippings (Including Coloured)
 Terram

Small bags and Dumpy bags available
Collected or Delivered

Tel: 01409 261439



"Do you need Driving Lessons?"
 Whether you are a complete beginner,
 Partly Trained or a
 Qualified Driver in need of a refresher

Contact- **EVELYN SHARMAN**
 For Professional Driving Tuition (DVSA, ADI)



Tel. 01409 259 848 Mobile. 07885 352 082
Email. evelyn.sharman@btinternet.com
www.evelynsharman.co.uk

renew SW Ltd
 T 01409 253533
 9 Tamar Business Units
 Holsworthy Industrial Estate
 Holsworthy, Devon, EX22 6HL
www.renew-sw.co.uk

**QUALITY WINDOWS, DOORS,
 CONSERVATORIES,
 SOLAR PV & ROOFLINE**

Your Local Home Improvement Specialists




ATLANTA FIRST AID
TRAINING

Courses Offered:
 First Aid at Work.
 Emergency First Aid at Work.
 Paediatric First Aid.
 Paediatric Emergency First Aid.
 Annual refresher courses.

All courses are certificated and OFQUAL regulated.
 Fully qualified Tutor.
 Can be conducted at your place of work.

Further information please contact:
 Lorraine Buttery Tel: 01409 282956
 email: atlantafaaw@gmail.com

